



Government of The District of Columbia Child and Family Services Agency Organizational Chart

Robert L. Matthews
Director
Fiscal Year 2022

Key Chart

Vacant Positions

Retirement Incentive

Case Carrying SW

Acting/Details

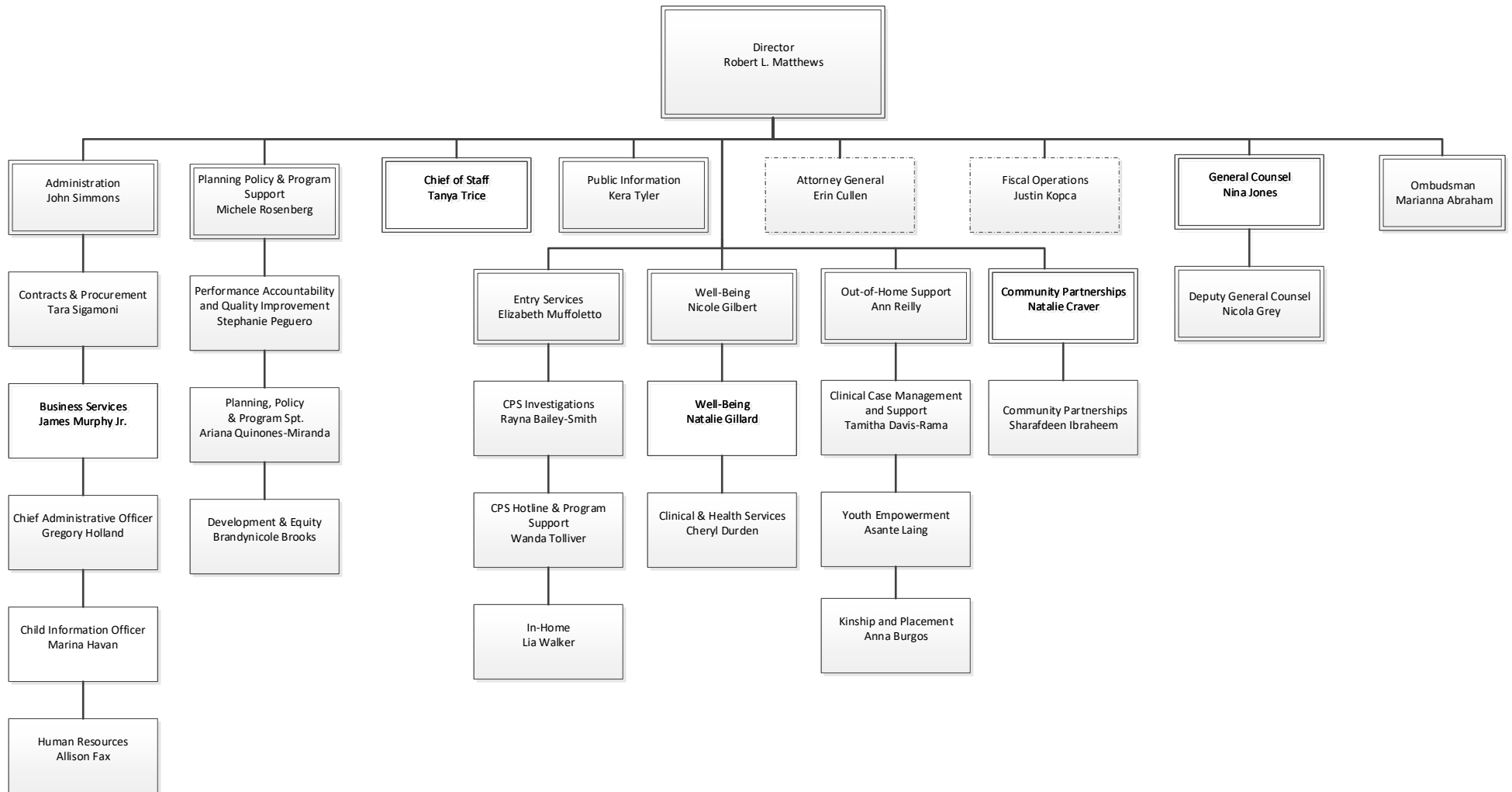
Training

TABLE OF CONTENTS

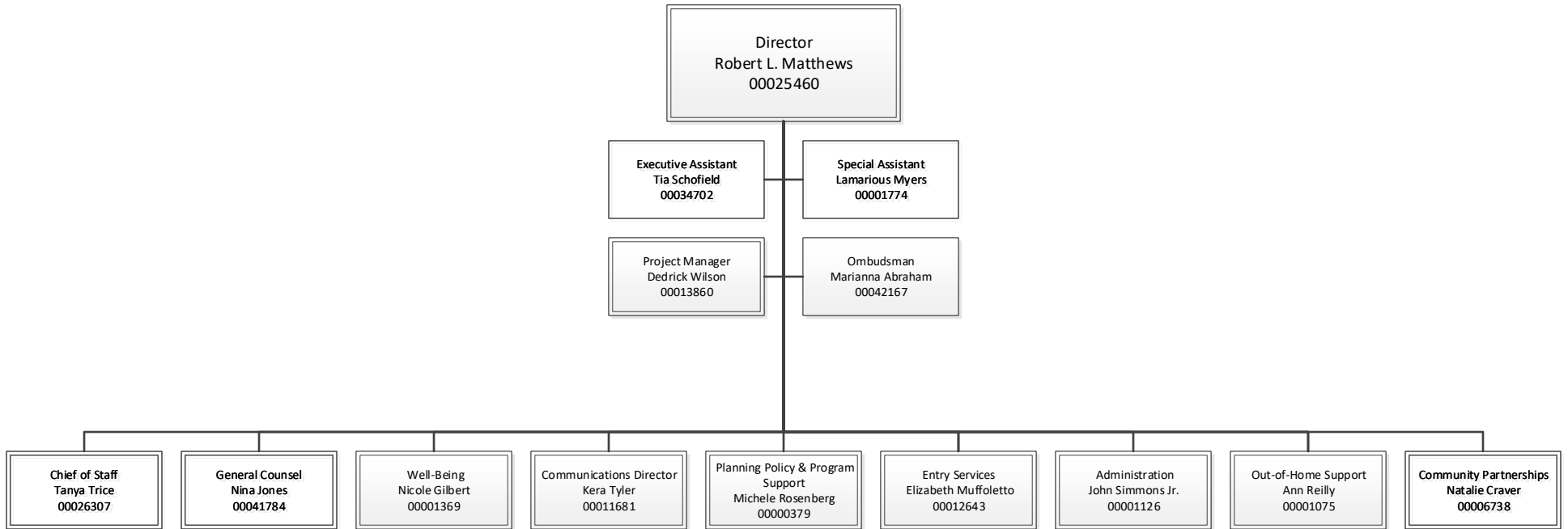
Agency Overview	
Office of the Director	1
Program Outcomes Unit	1a
Chief of Staff	1b
Office of Public Information	1c
Office of General Counsel	1d
Fiscal Operations Administration	1e
<u>Office of the Deputy Director for Community Partnerships</u>	1f
<u>Office of the Deputy Director for Well-Being</u>	2
Office of Well-Being	2a
Health Services Administration	2b
<u>Office of the Deputy Director of Out-Of-Home</u>	3
Clinical Case Management and Support Administration	3a
Clinical Case Management and Support Administration: I	3b
Clinical Case Management and Support Administration: II	3c
Clinical Case Management and Support Administration: III	3d
Clinical Case Management and Support Administration: IV	3e
Office of Youth Empowerment	3f
Kinship and Placement Overview	3g
Kinship and Placement: I	3h
Kinship and Placement: II	3i

<u>Office of the Deputy Director for Entry Services</u>	4
CPS Investigations	4a
CPS Investigations: Division I	4b
CPS Investigations: Division II	4c
CPS Investigations: Division III	4d
CPS Investigations: Division IV	4e
CPS Support Services	4f
CPS Hotline	4g
In-Home Overview	4h
In-Home I	4i
In-Home II	4j
<u>Office of the Deputy Director for Planning, Policy and Program Support</u>	5
Performance Accountability and Quality	
Improvement Administration	5a
Planning, Policy, Program Support & Licensing	5b
Planning & Policy Division	5c
Licensing Division	5d
Development & Equity	5e
<u>Office of the Deputy Director for Administration</u>	6
Chief Administrative Office Administration	6a
Child Information Systems Administration	6b
Contracts and Procurement Administration	6c
Human Resources Administration	6d
Business Services Administration Overview	6e
Business Services	6f
Contracts Monitoring Division	6g

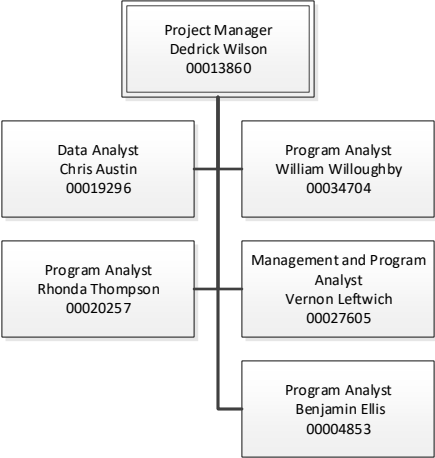
CHILD AND FAMILY SERVICES AGENCY-OVERVIEW



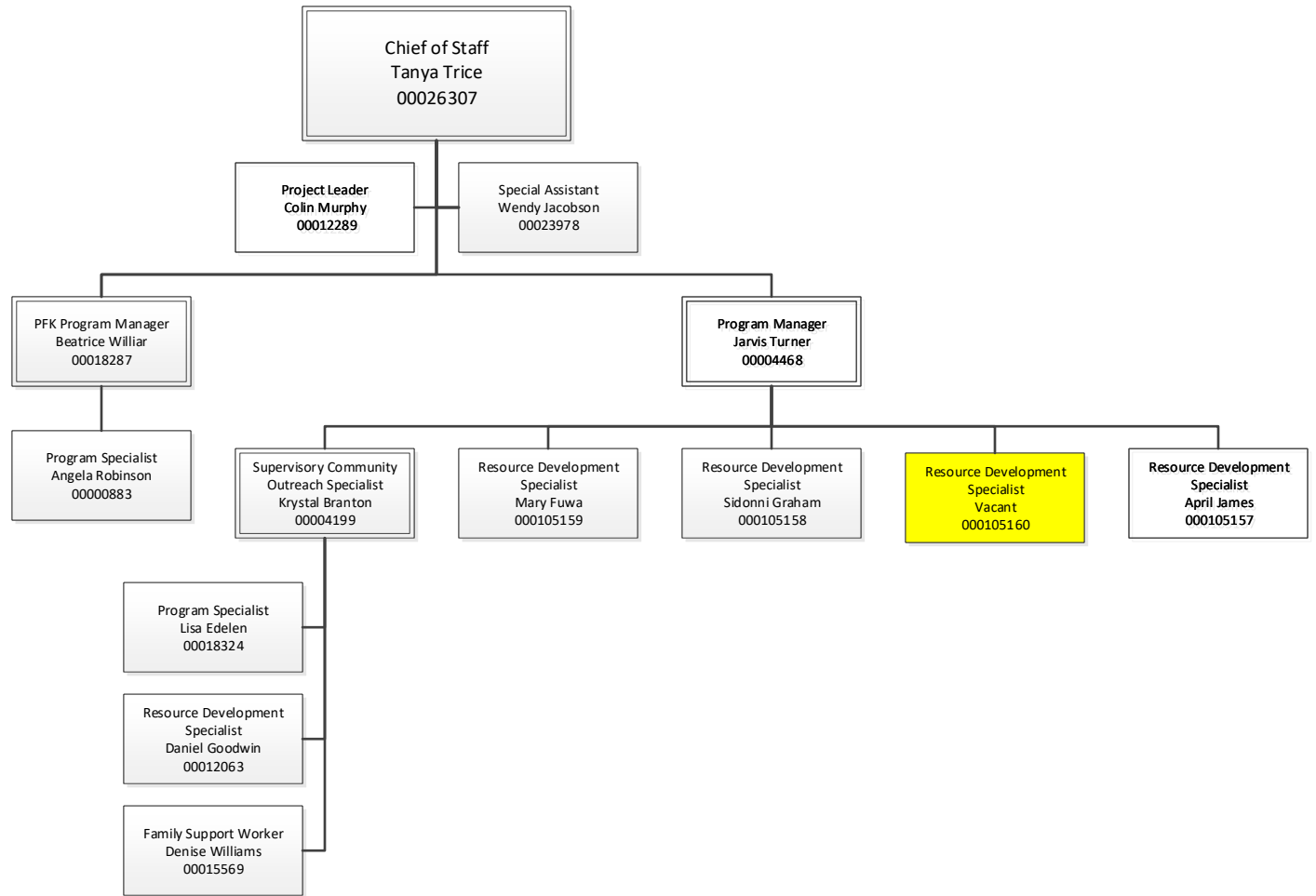
OFFICE OF THE DIRECTOR



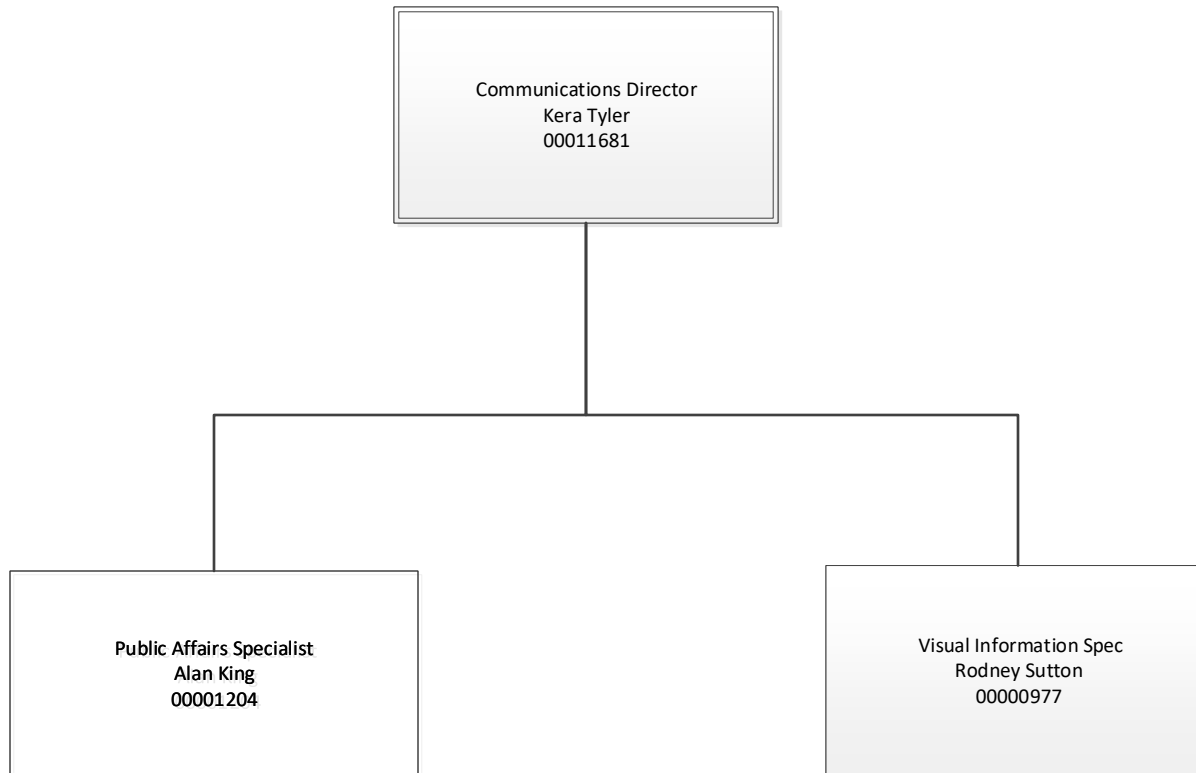
PROGRAM OUTCOMES UNIT



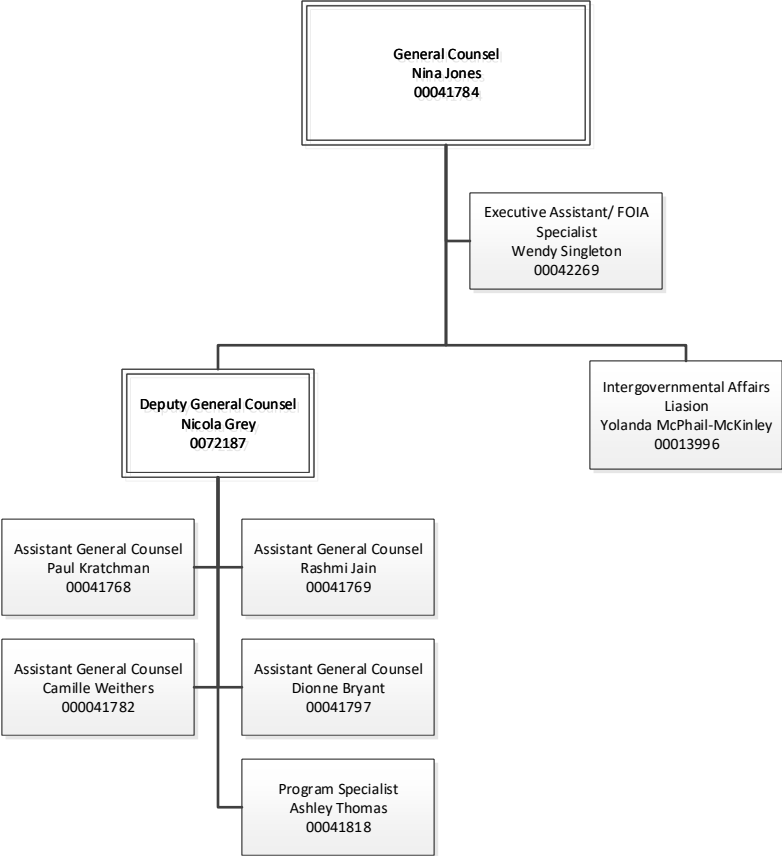
OFFICE OF THE CHIEF OF STAFF



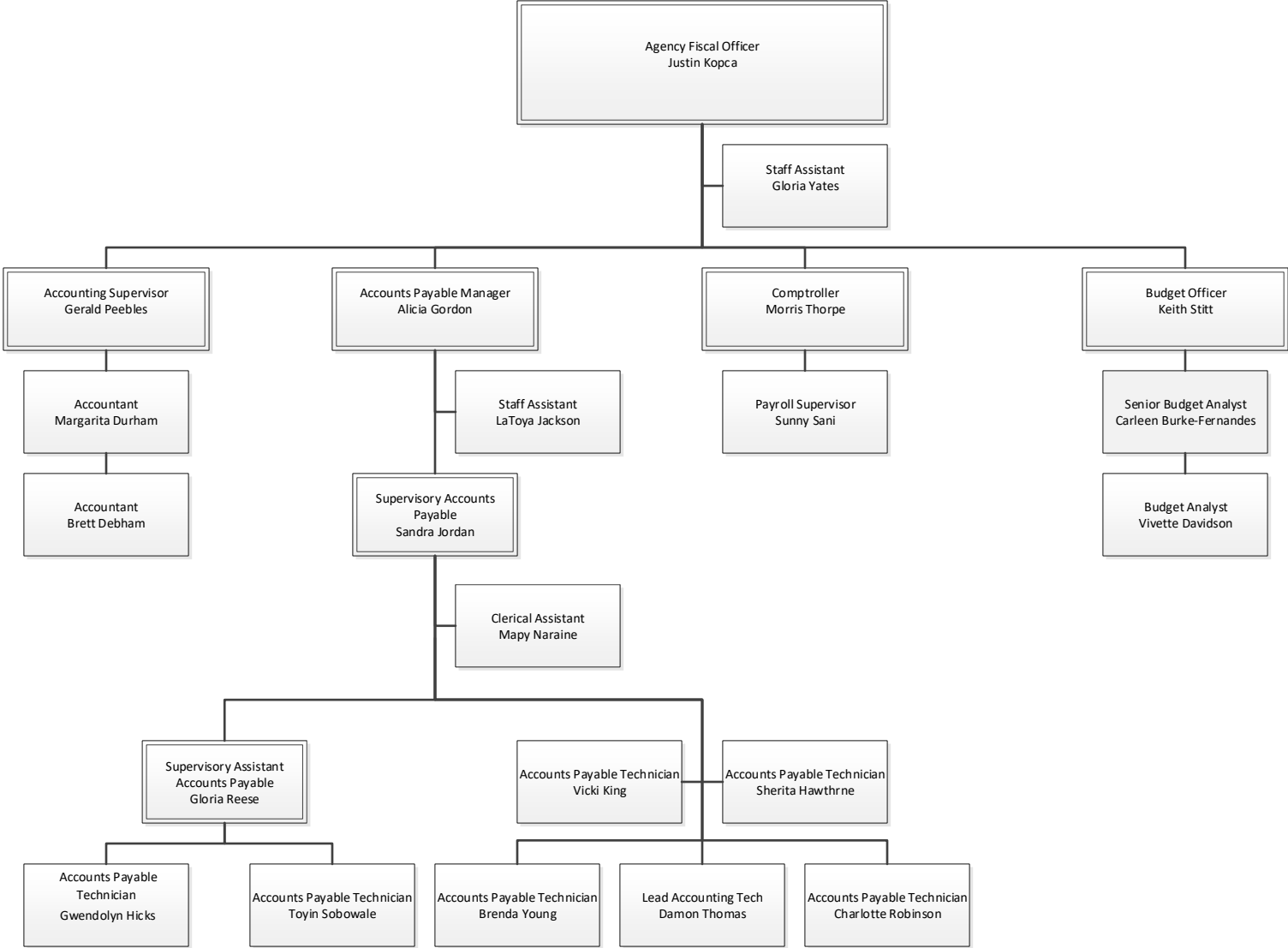
OFFICE OF PUBLIC INFORMATION



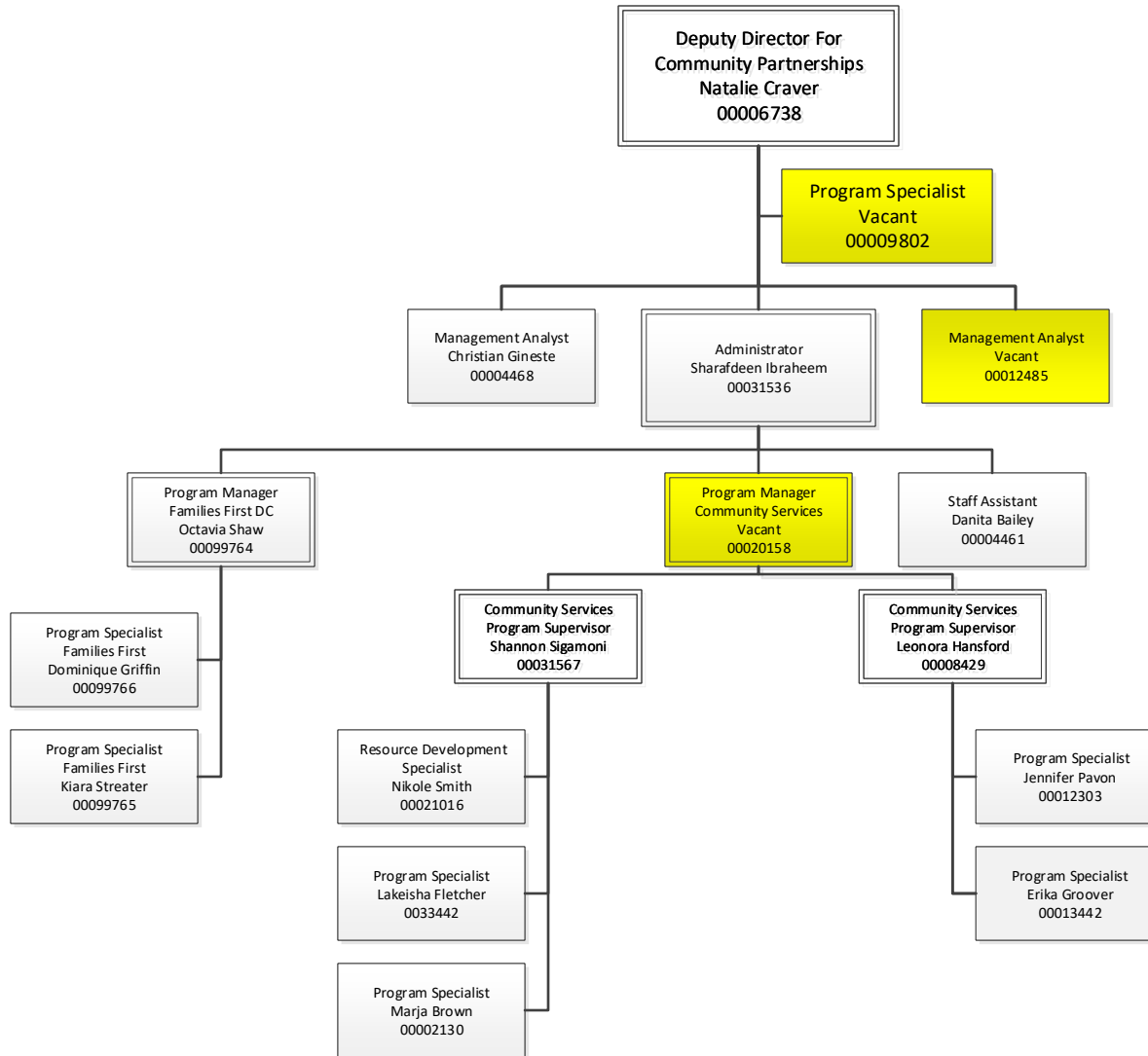
OFFICE OF THE GENERAL COUNSEL



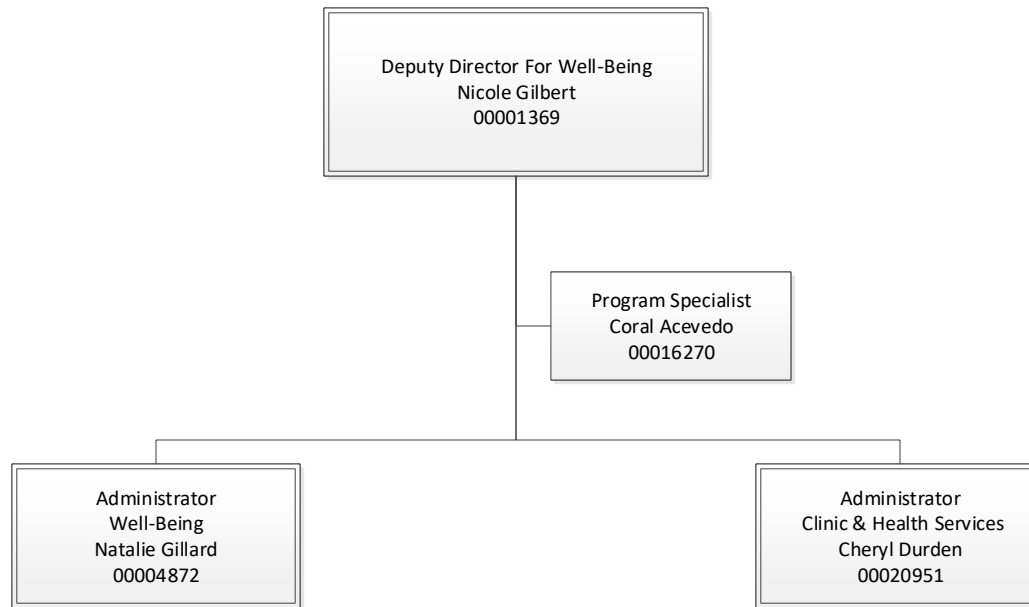
OFFICE OF THE CHIEF FINANCIAL OFFICER



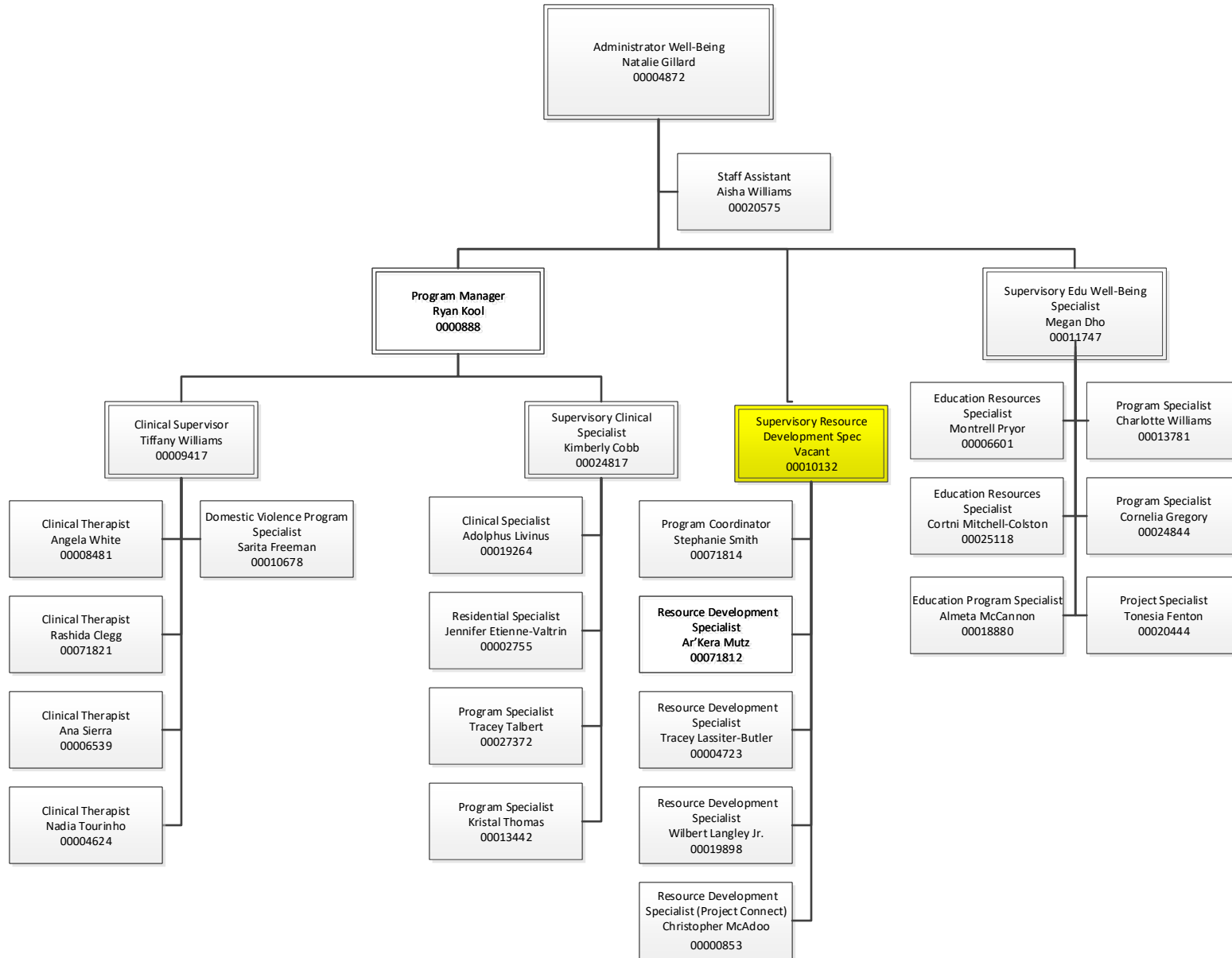
OFFICE OF THE DEPUTY DIRECTOR FOR COMMUNITY PARTNERSHIPS



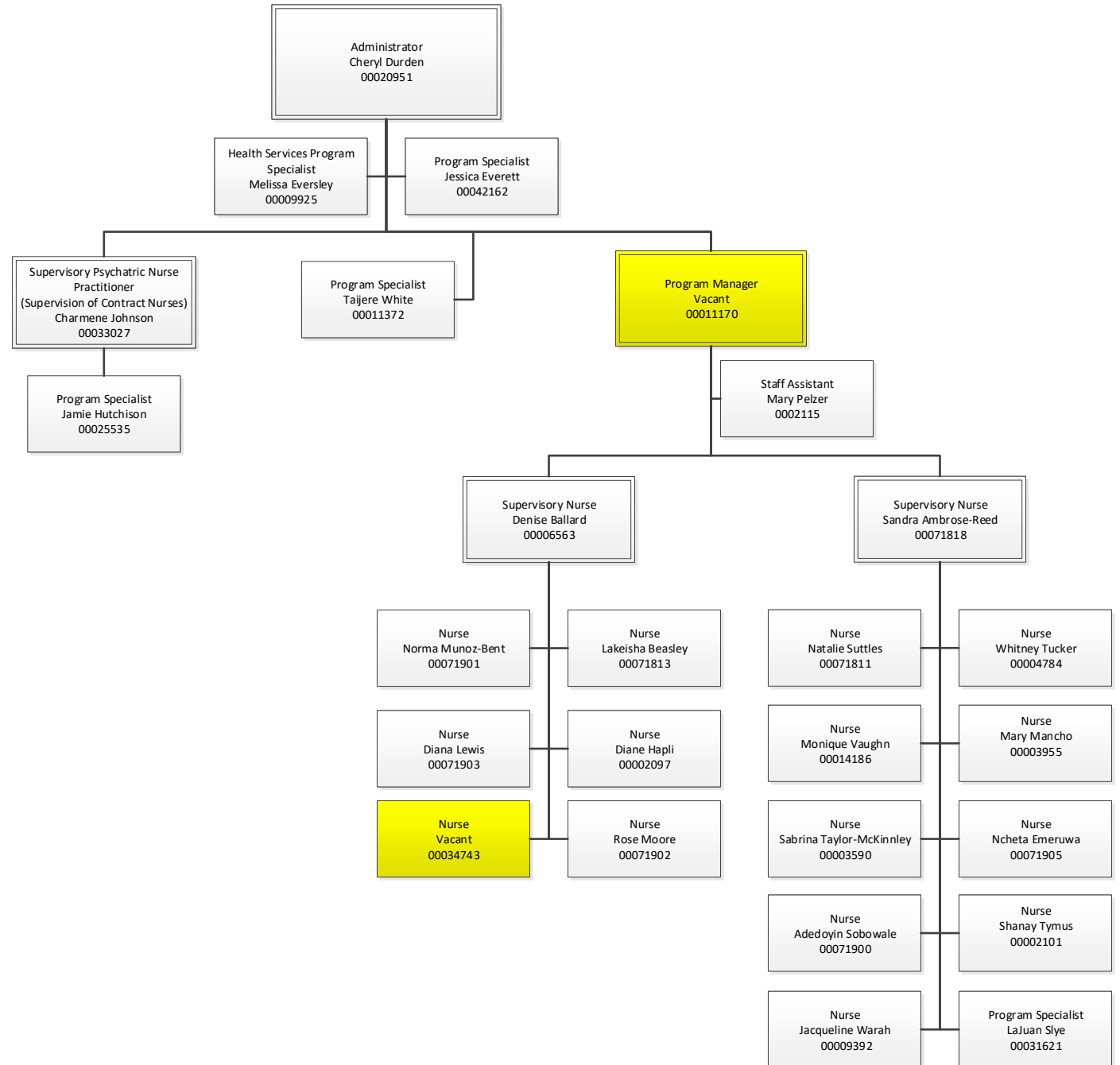
OFFICE OF THE DEPUTY DIRECTOR FOR WELL-BEING



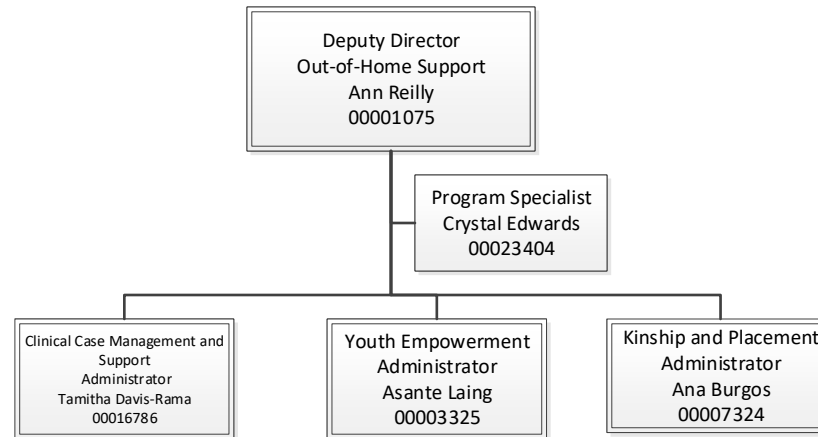
OFFICE OF WELL-BEING



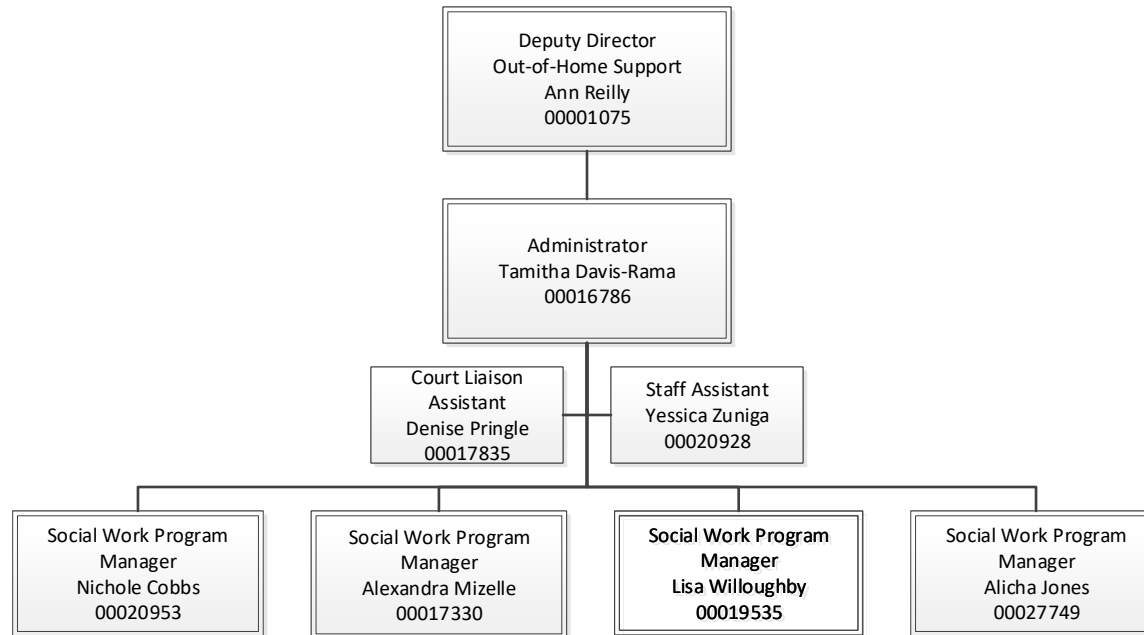
HEALTH SERVICES ADMINISTRATION



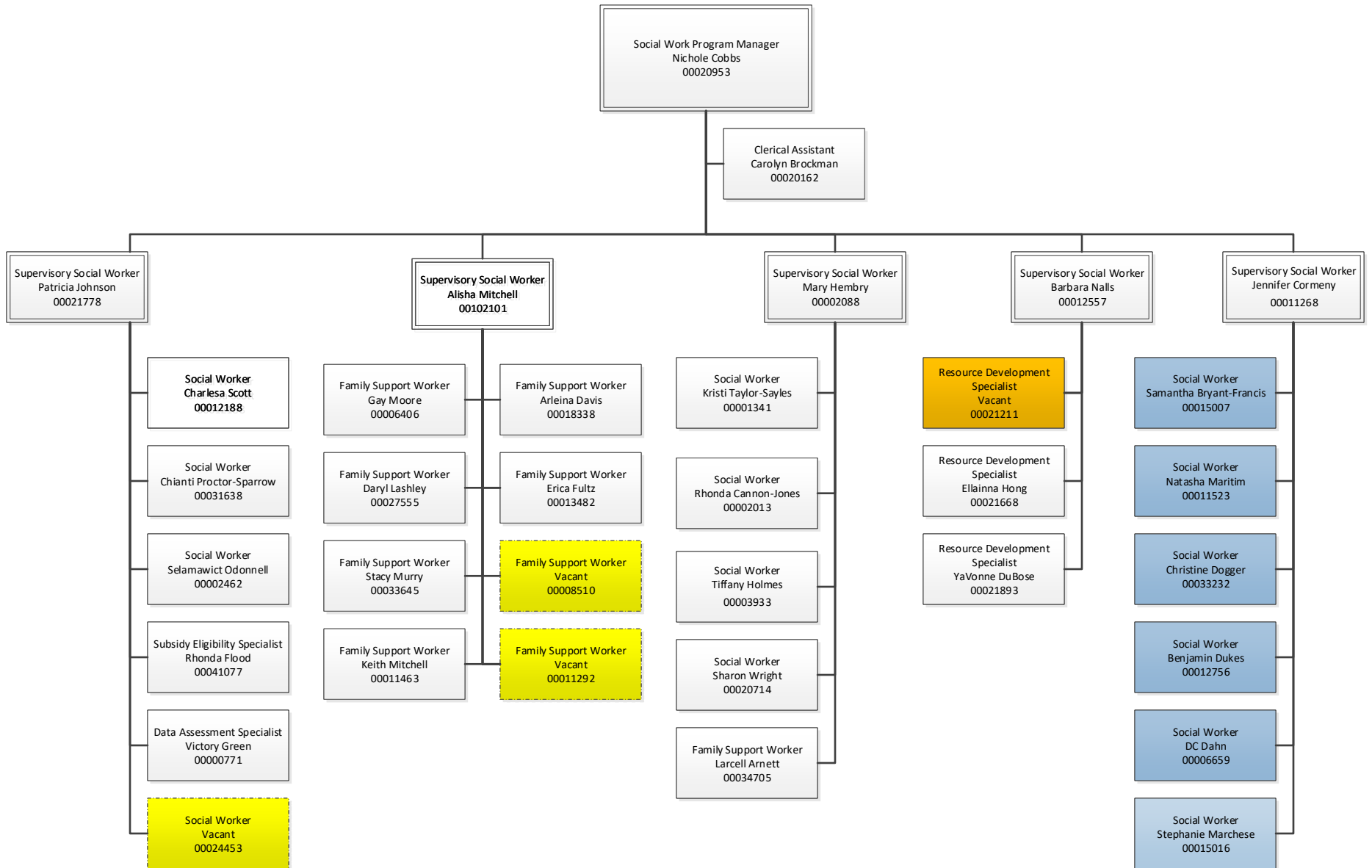
OFFICE OF THE DEPUTY DIRECTOR FOR OUT-OF-HOME SUPPORT



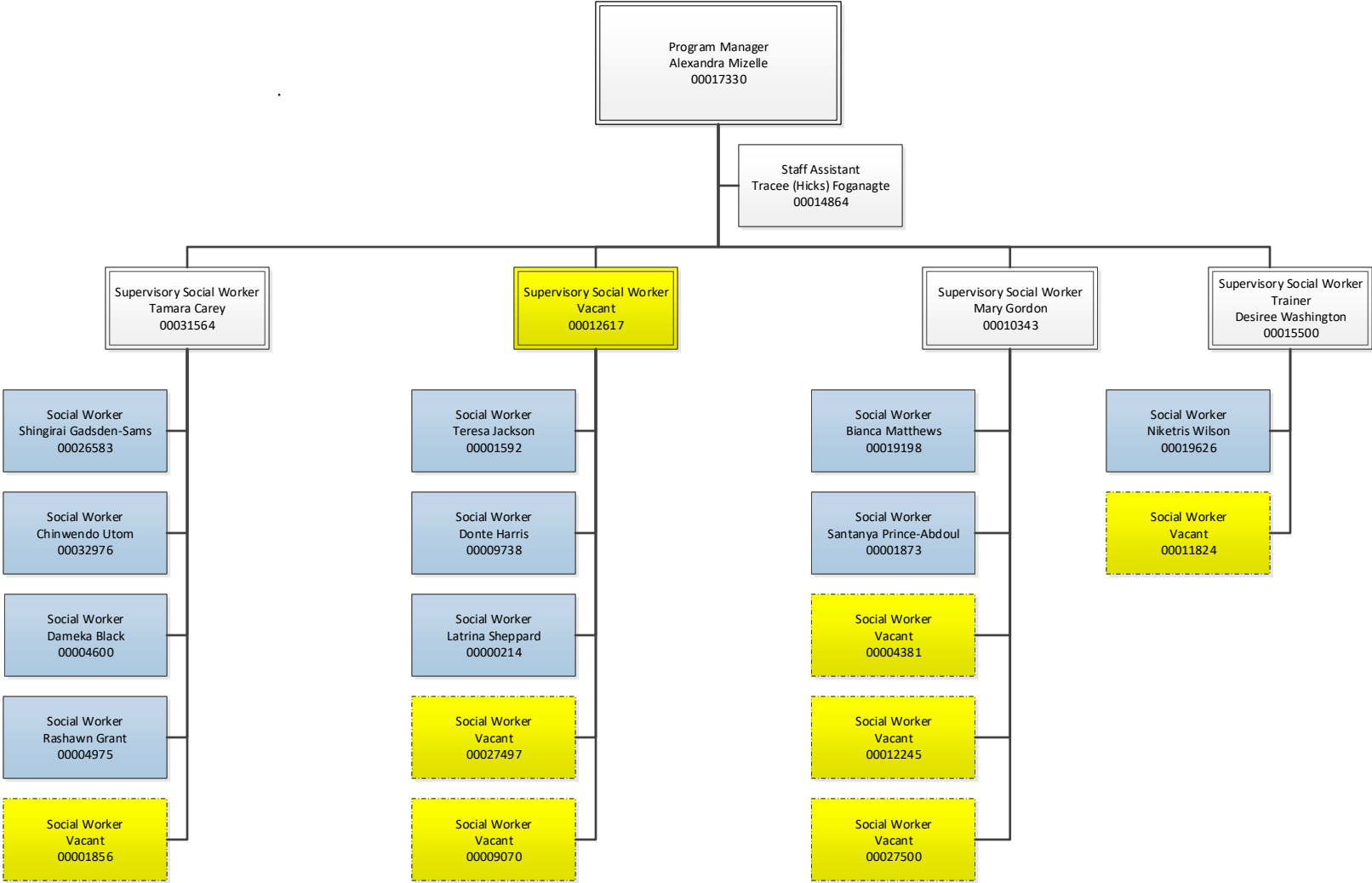
CLINICAL CASE MANAGEMENT AND SUPPORT ADMINISTRATION



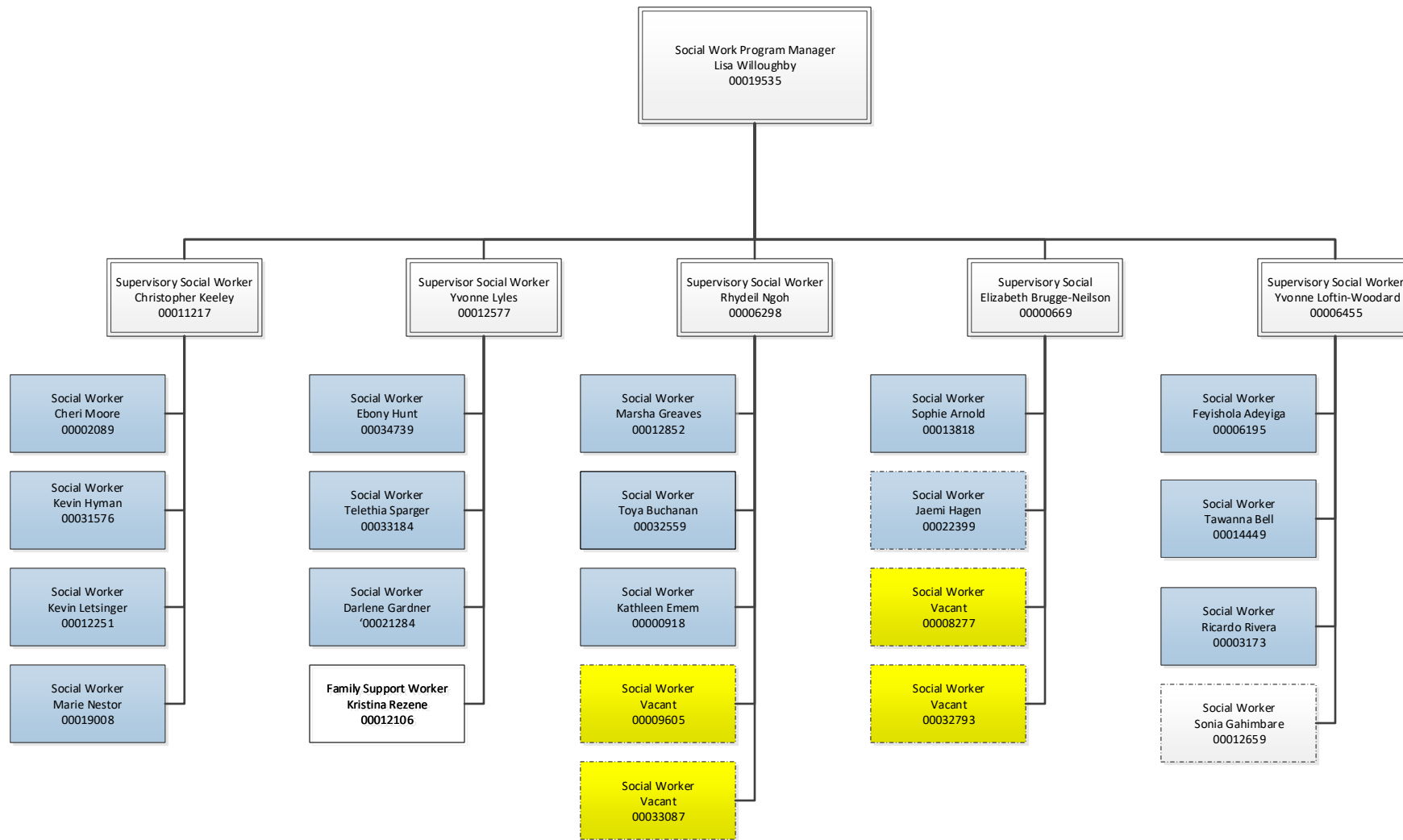
CLINICAL CASE MANAGEMENT AND SUPPORT I



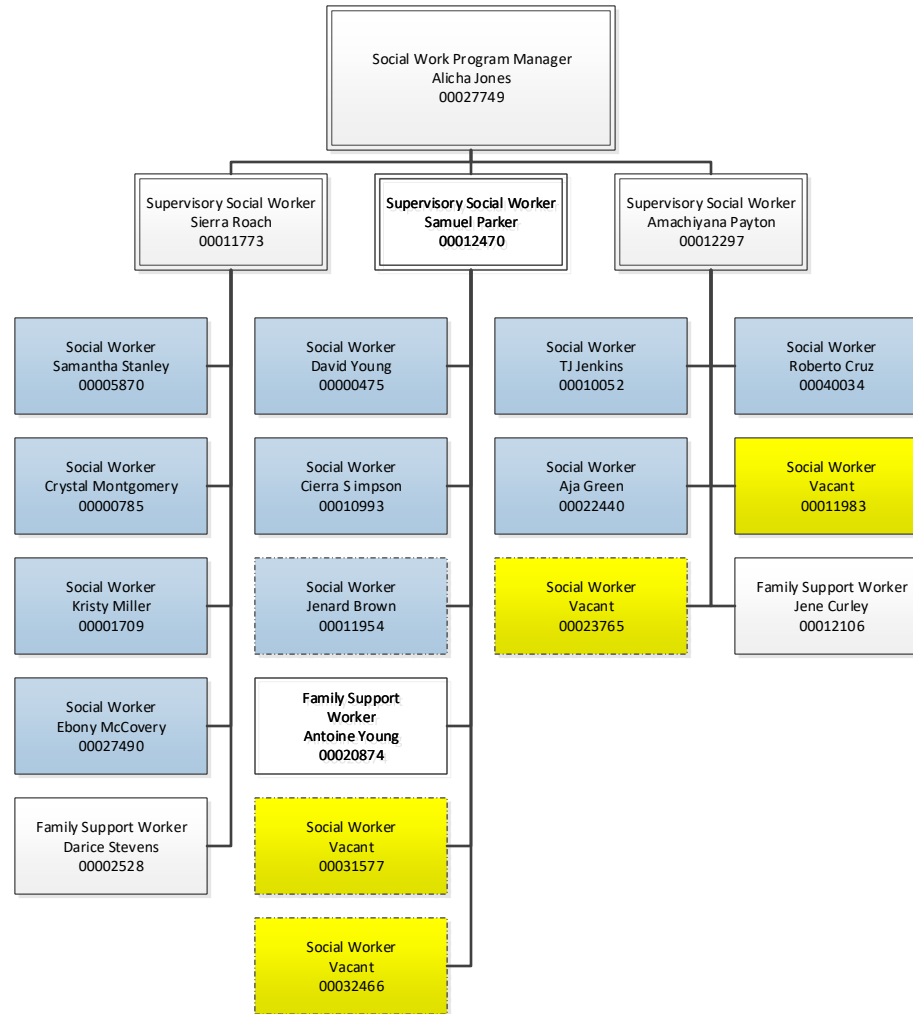
CLINICAL CASE MANAGEMENT AND SUPPORT II



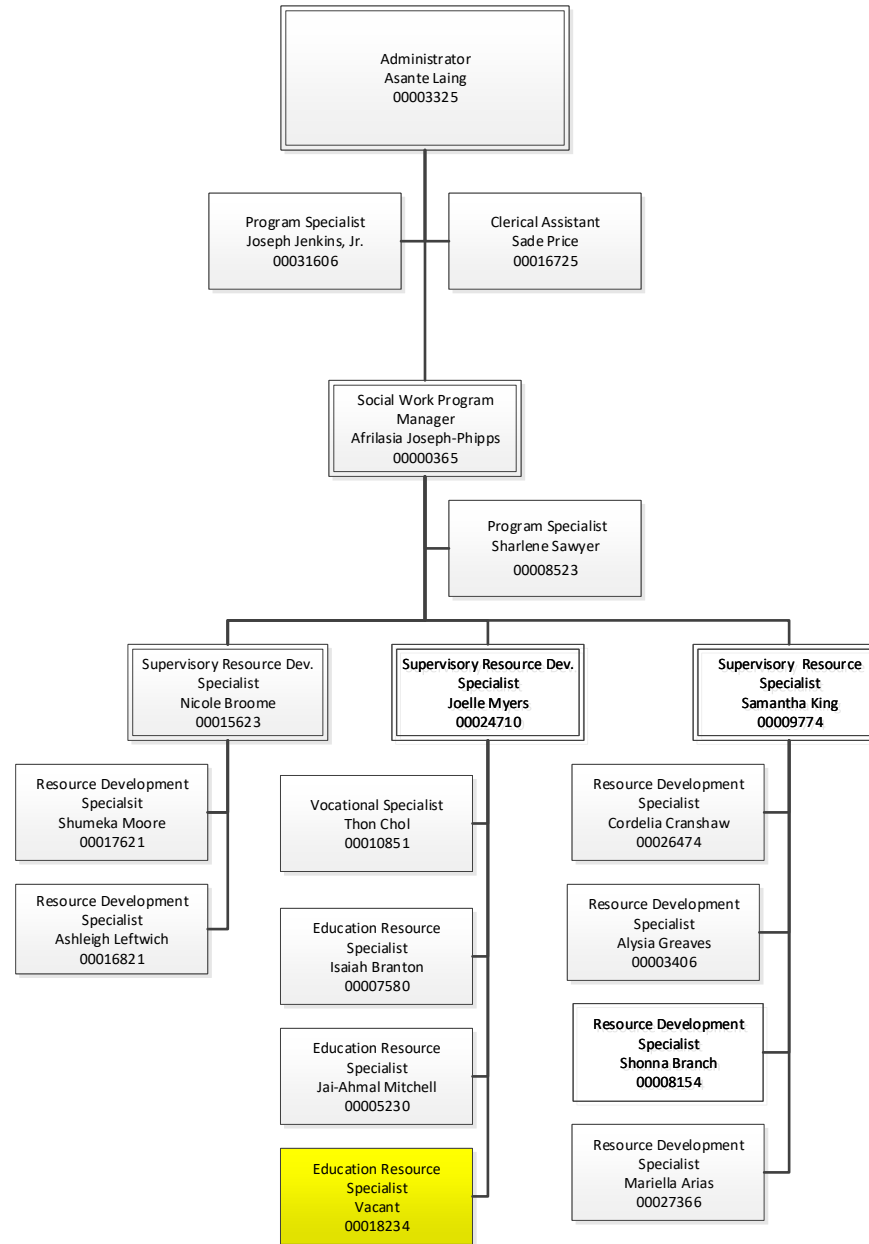
CLINICAL CASE MANAGEMENT AND SUPPORT III



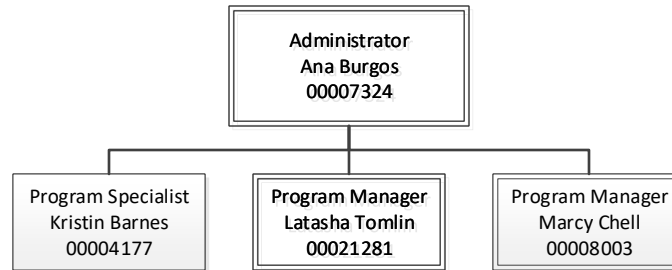
CLINICAL CASE MANAGEMENT AND SUPPORT IV



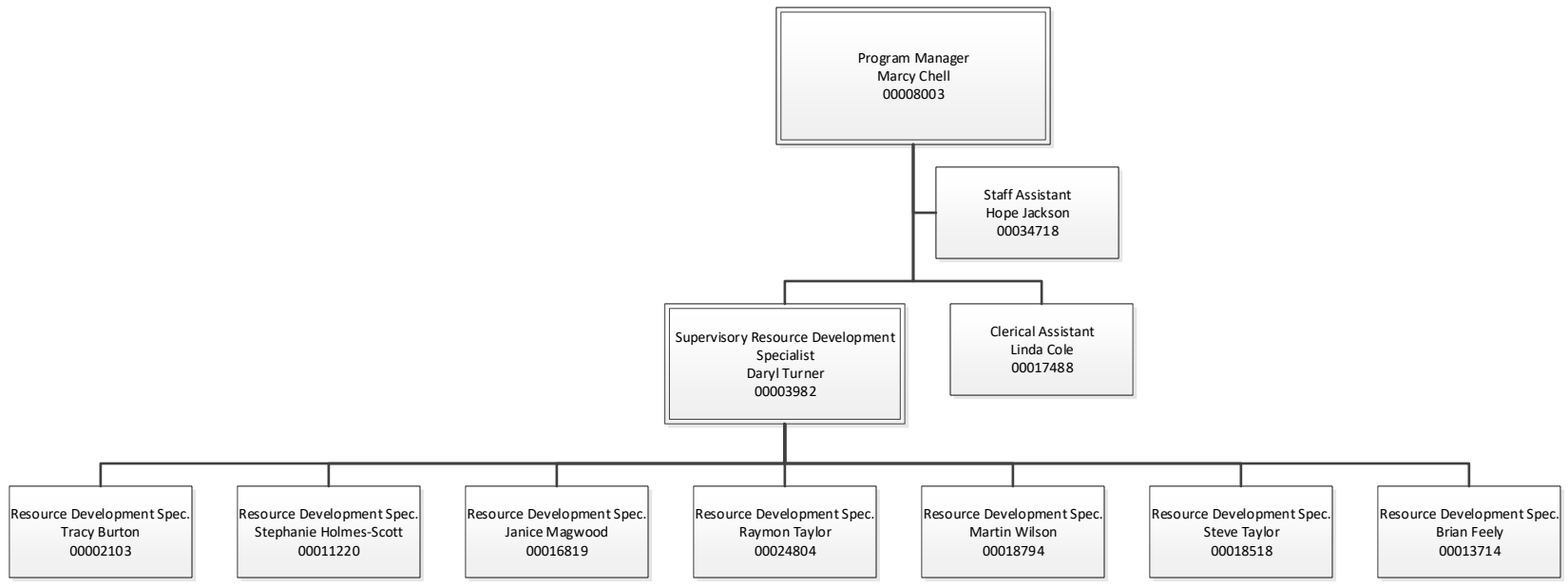
OFFICE OF YOUTH EMPOWERMENT



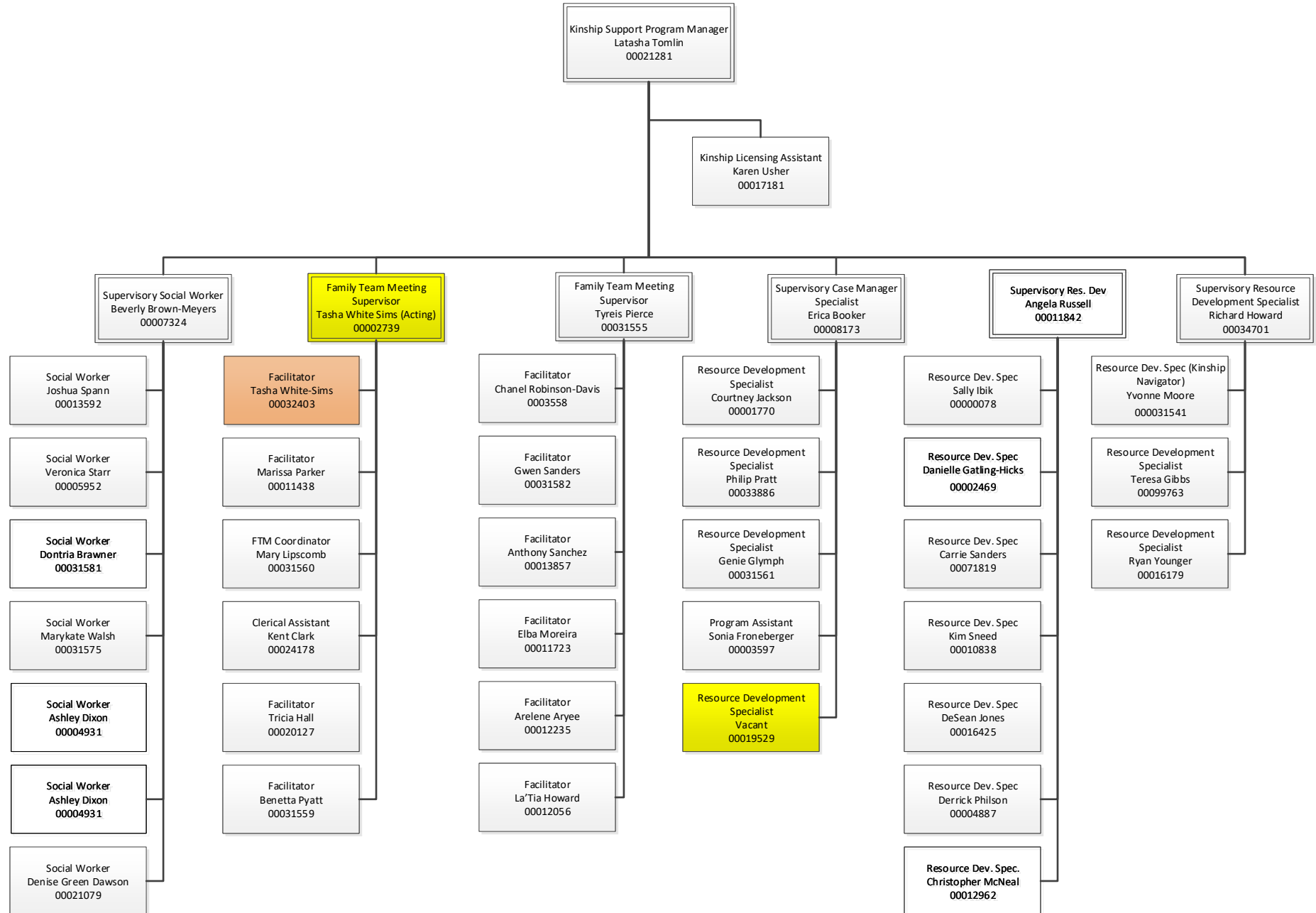
KINSHIP AND PLACEMENT OVERVIEW



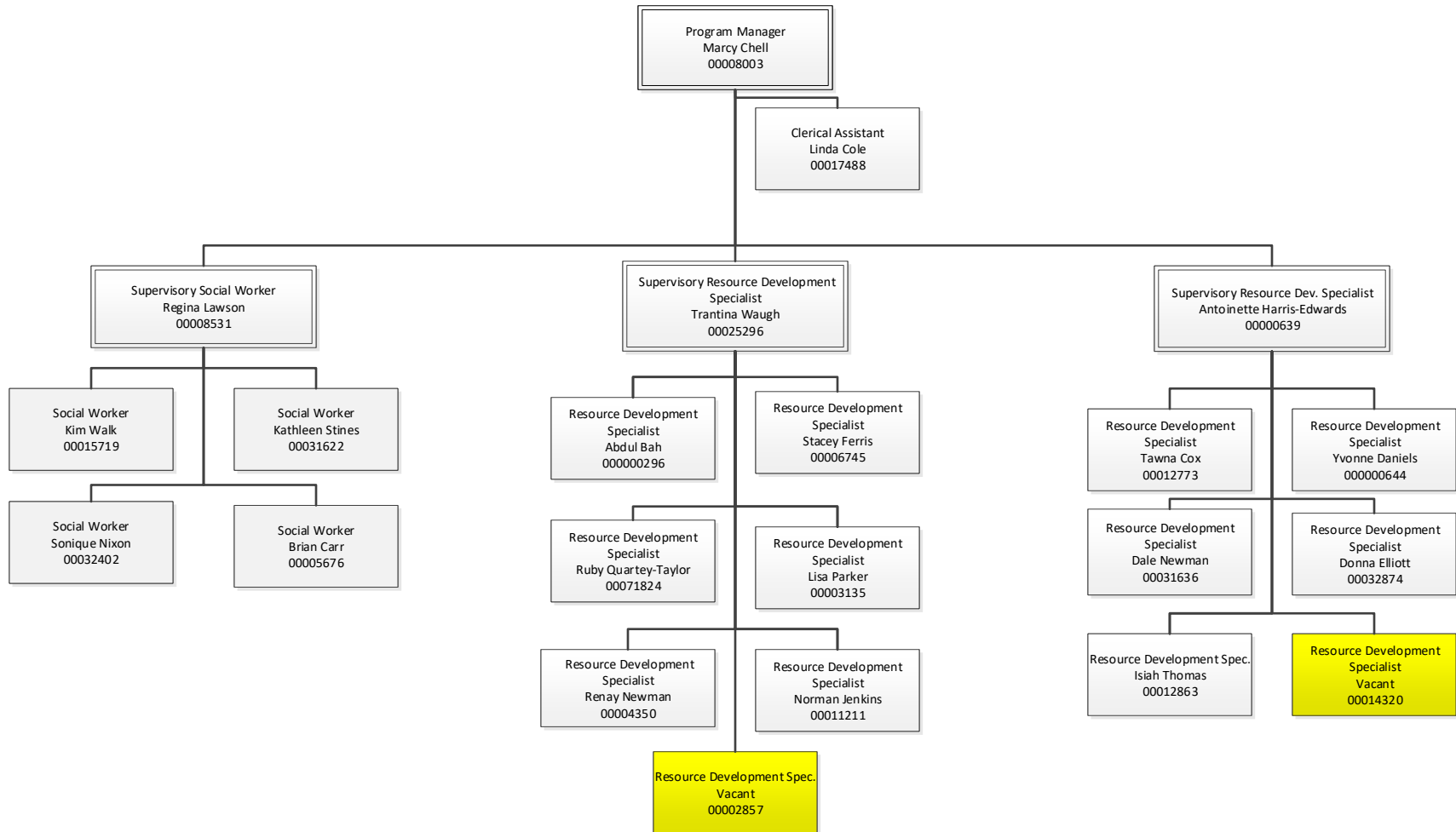
KINSHIP AND PLACEMENT I



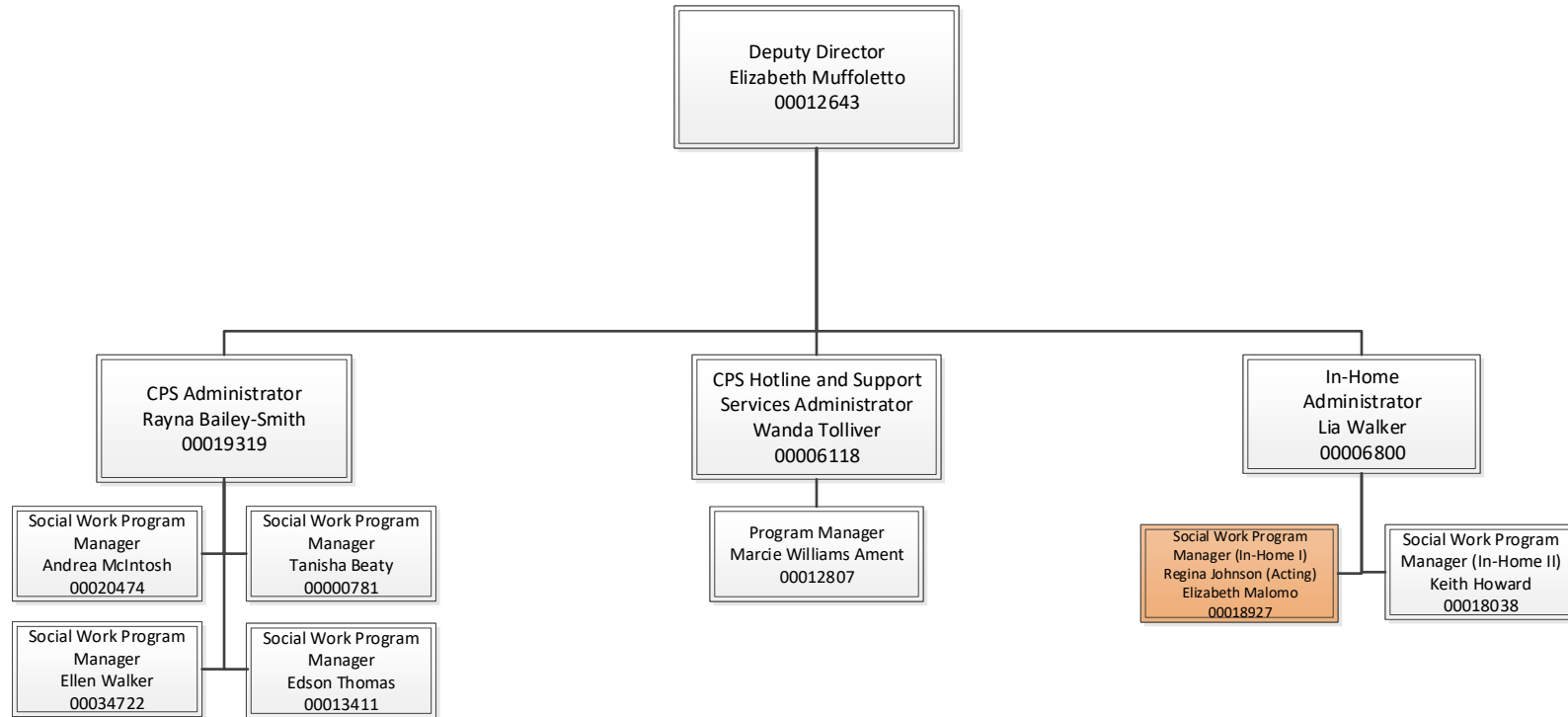
KINSHIP AND PLACEMENT II



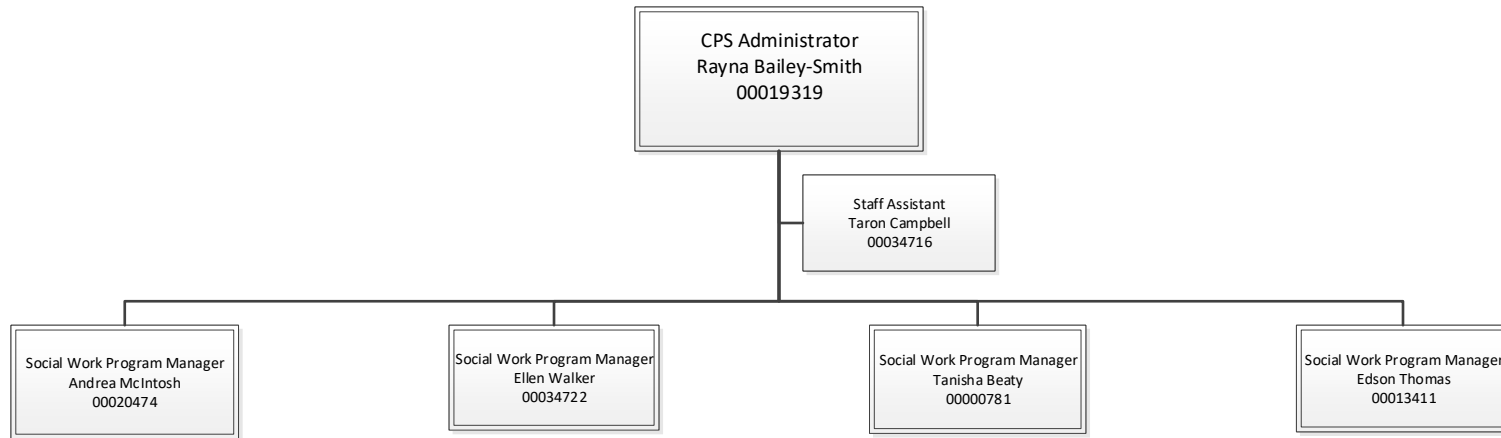
KINSHIP AND PLACEMENT III



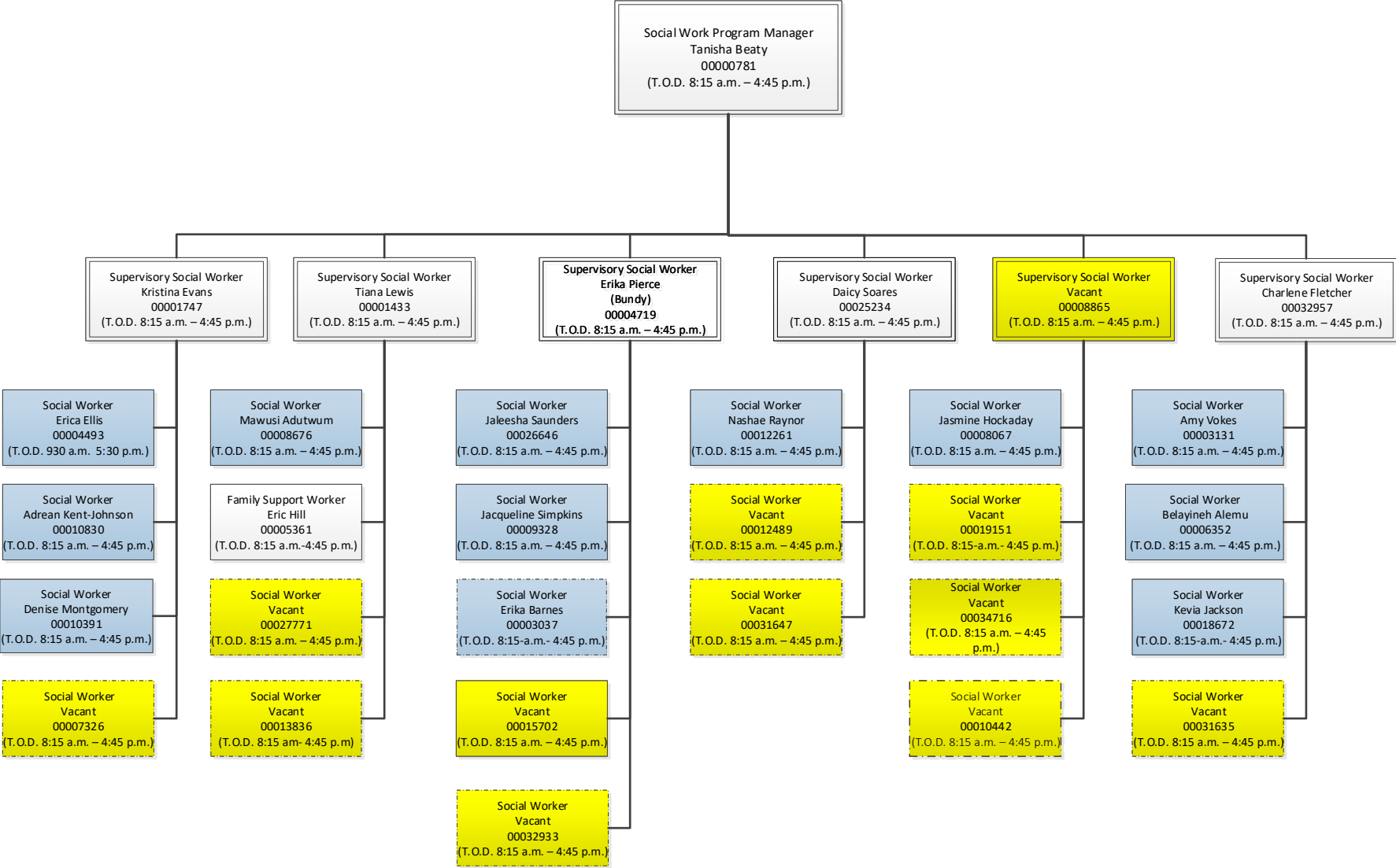
OFFICE OF THE DEPUTY DIRECTOR FOR ENTRY SERVICES



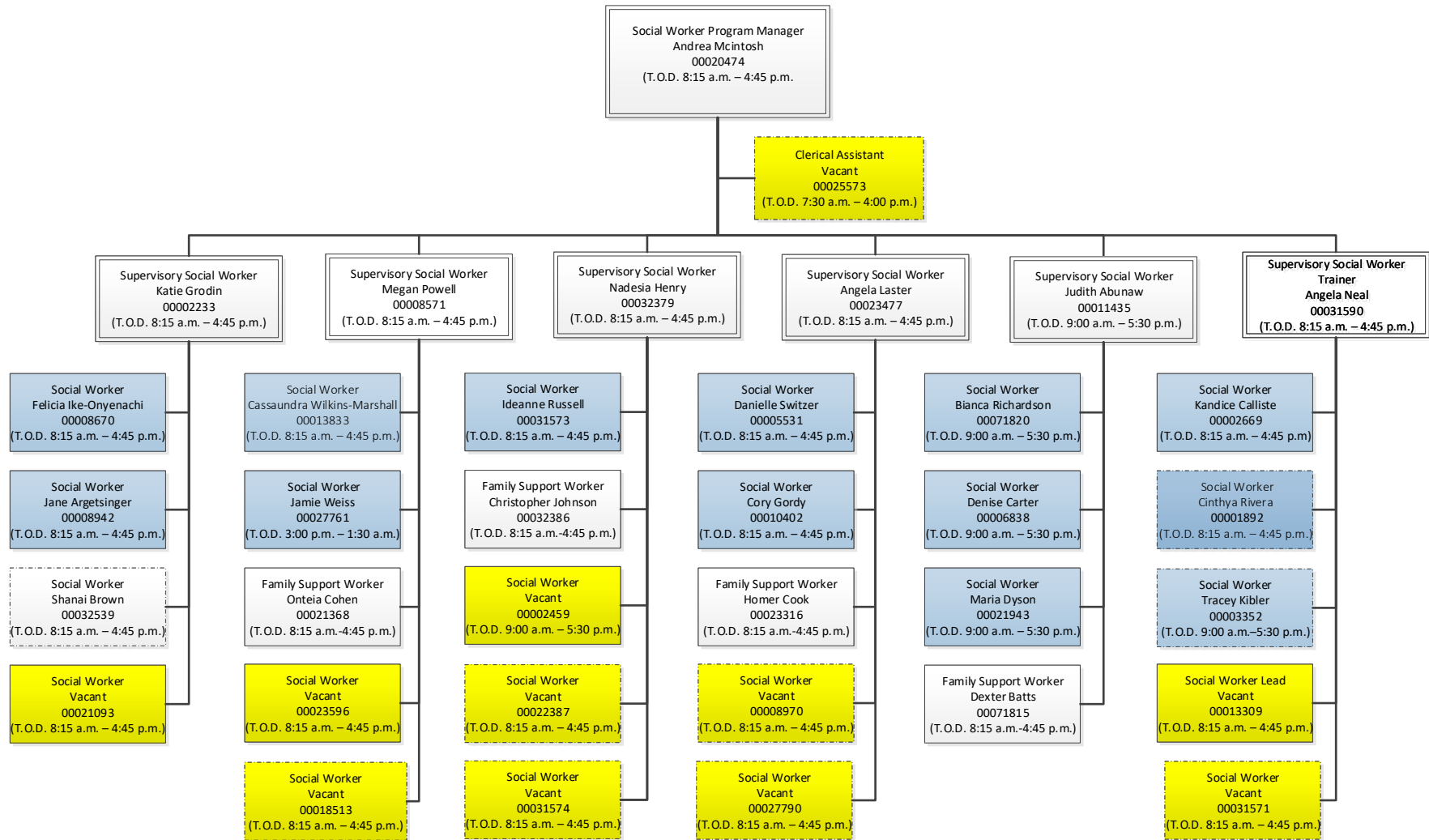
CHILD PROTECTIVE SERVICES INVESTIGATIONS



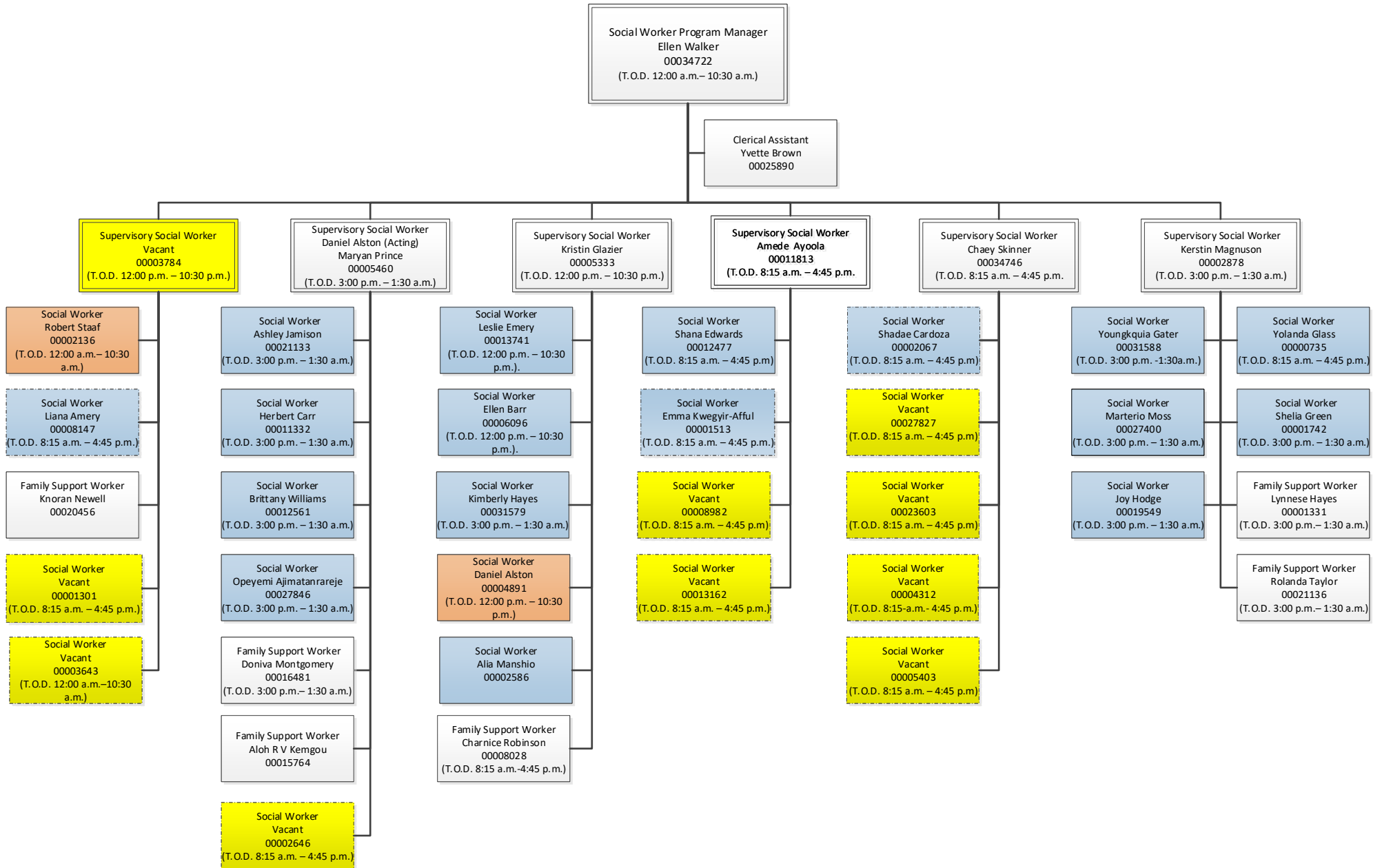
CPS INVESTIGATIONS DIVISION I



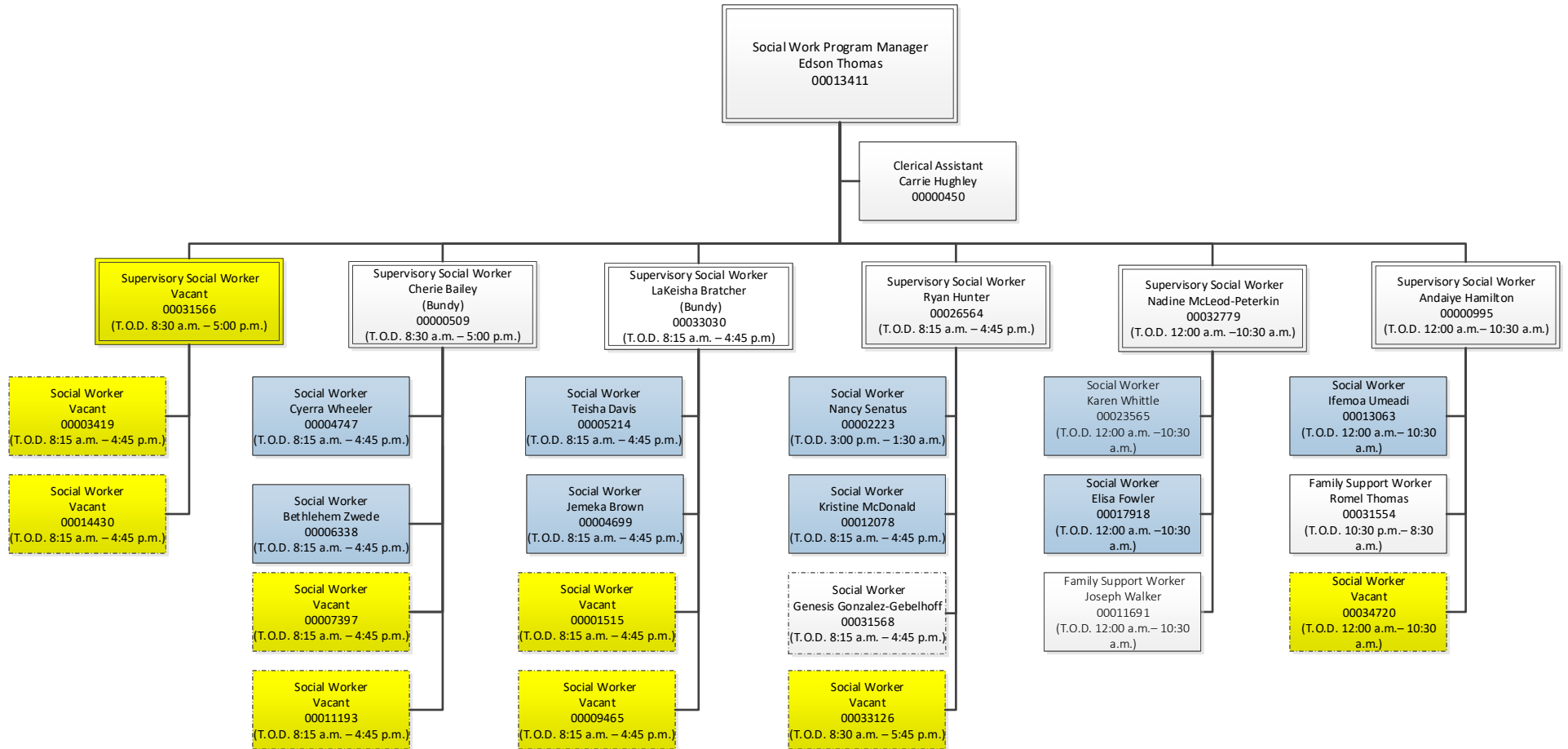
CPS INVESTIGATIONS DIVISION II



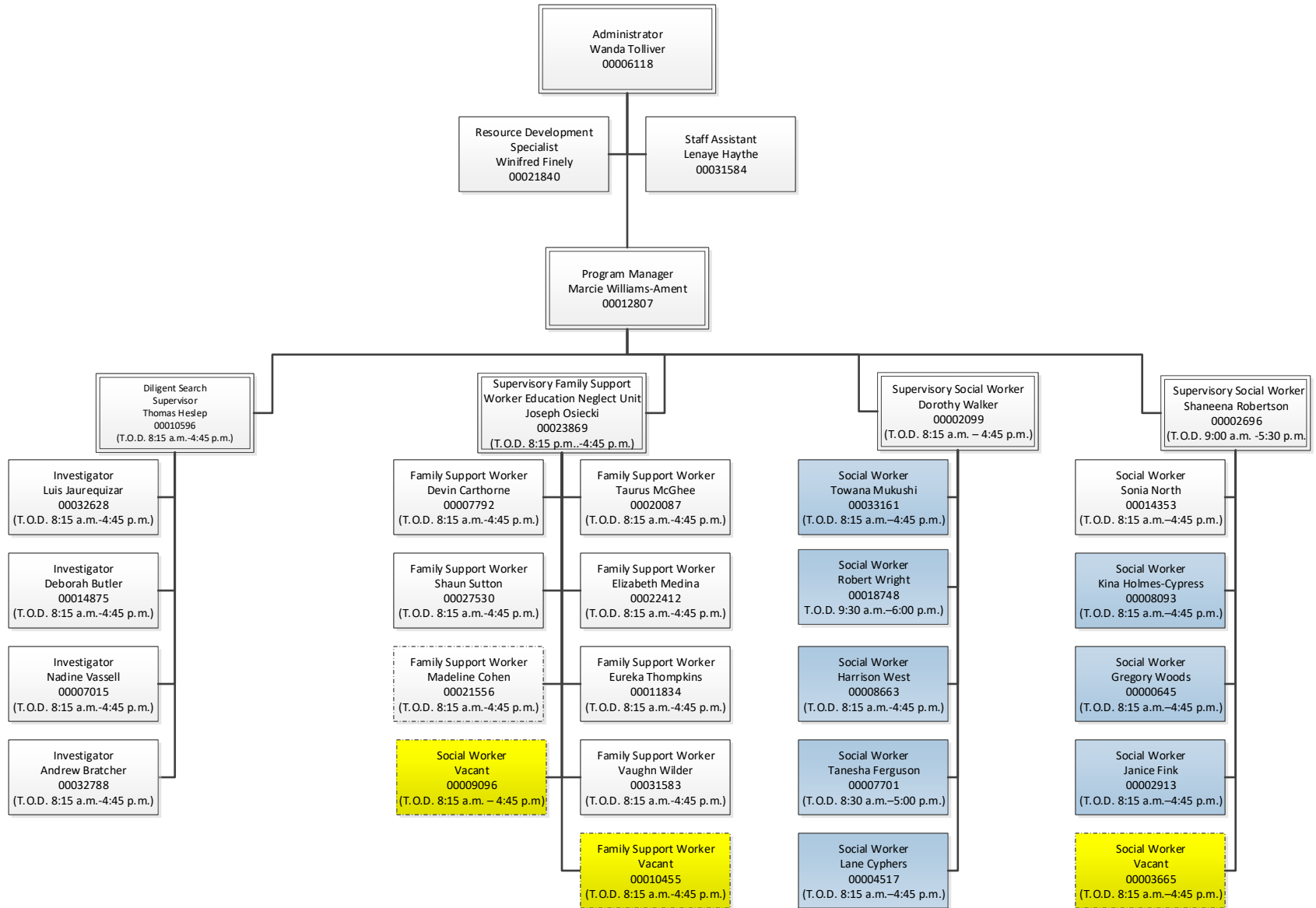
CPS INVESTIGATIONS DIVISION III



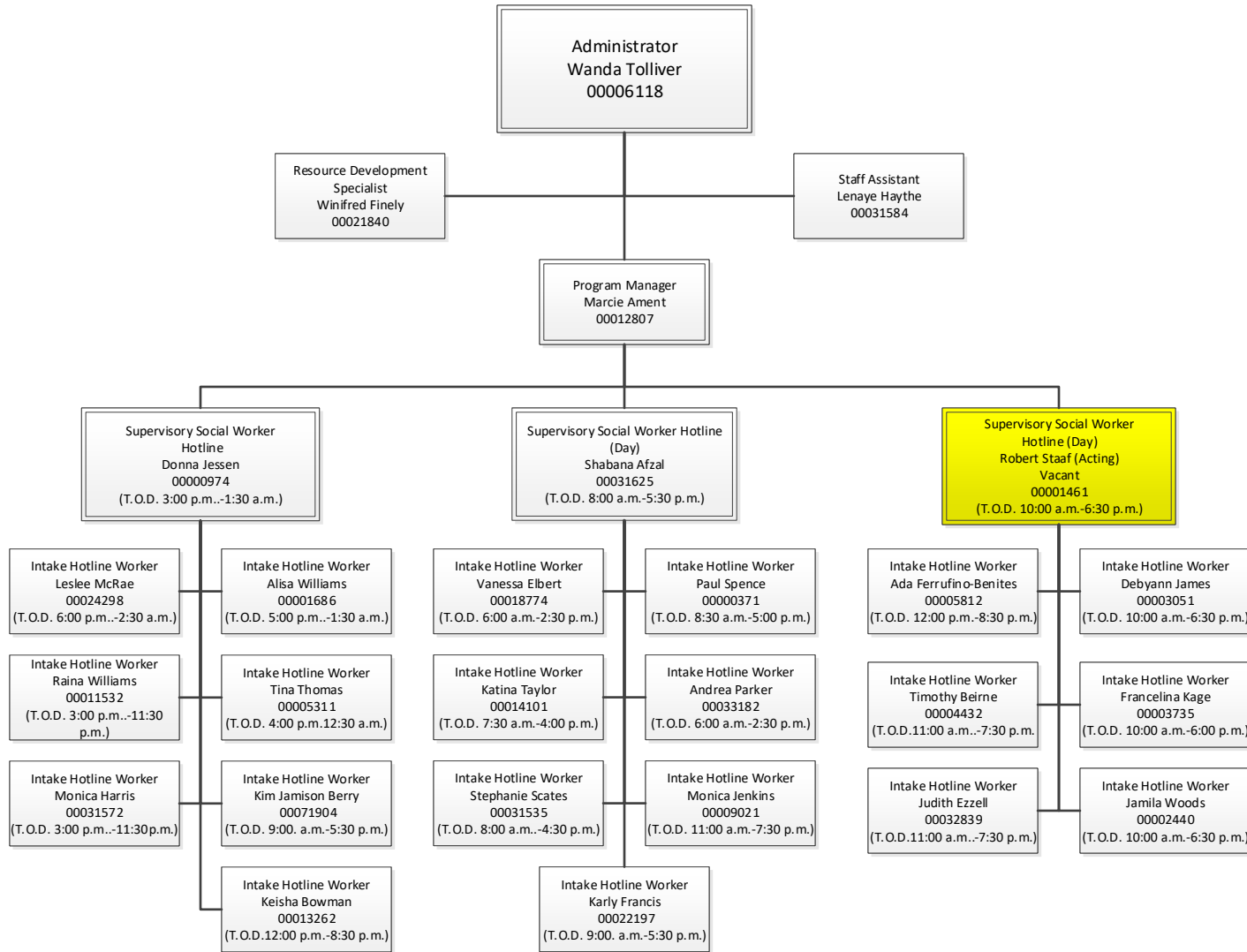
CPS INVESTIGATIONS DIVISION IV



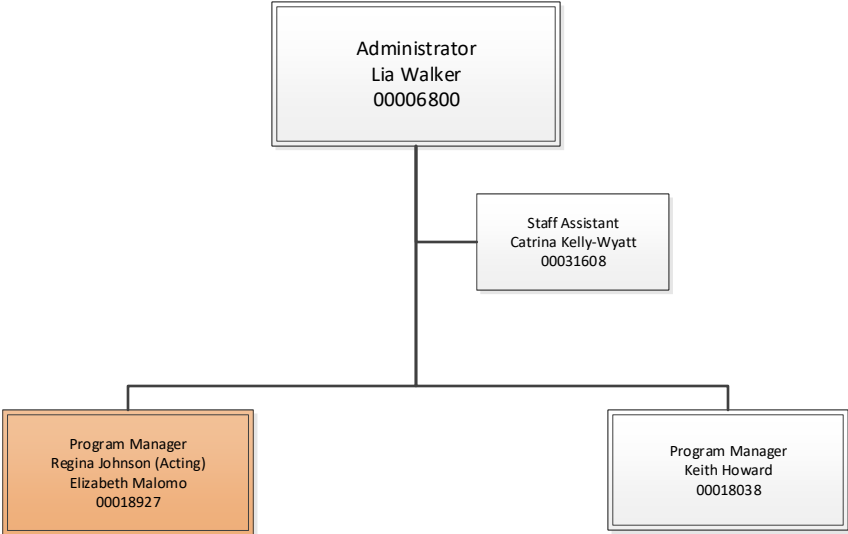
CPS SUPPORT SERVICES



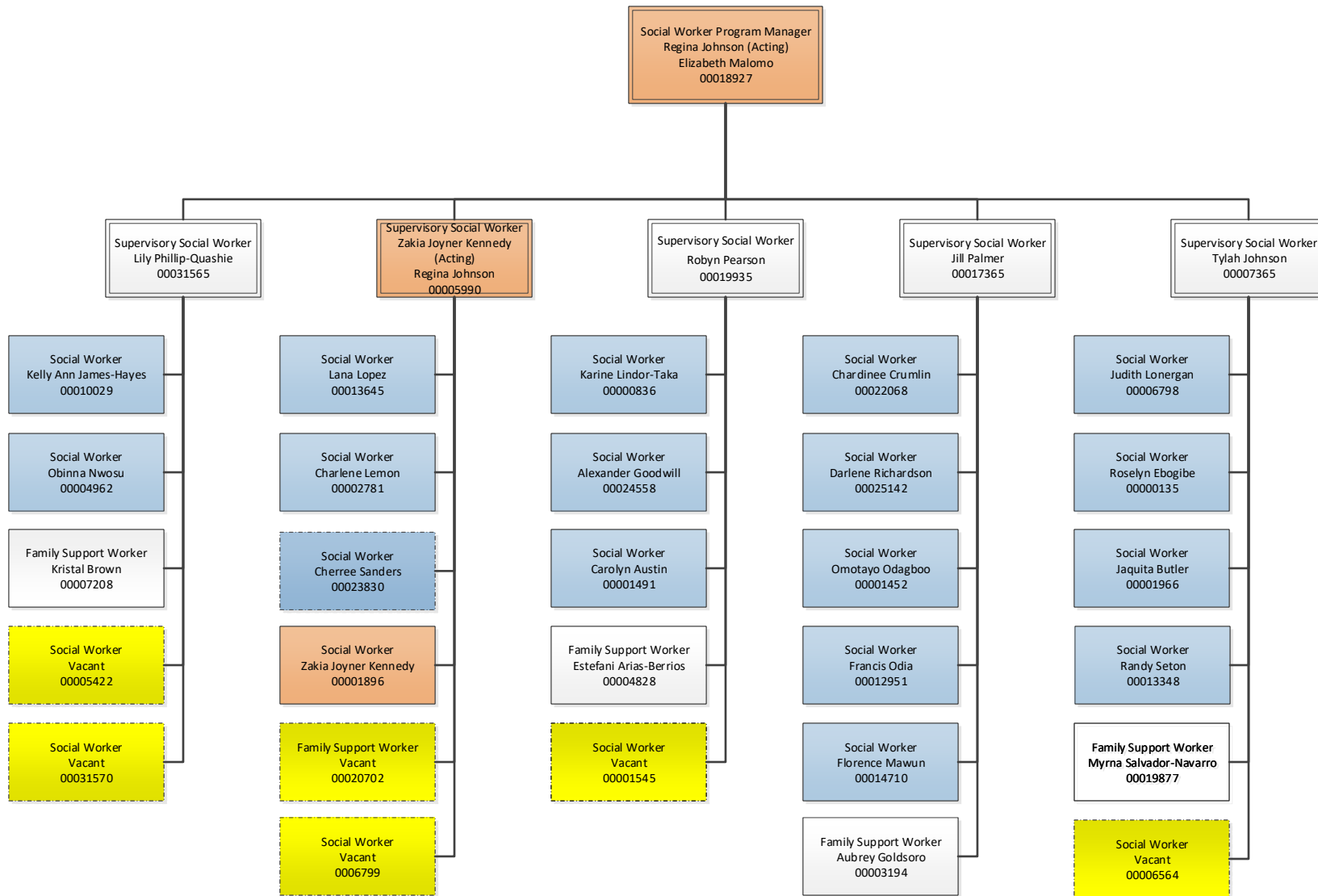
CPS HOTLINE



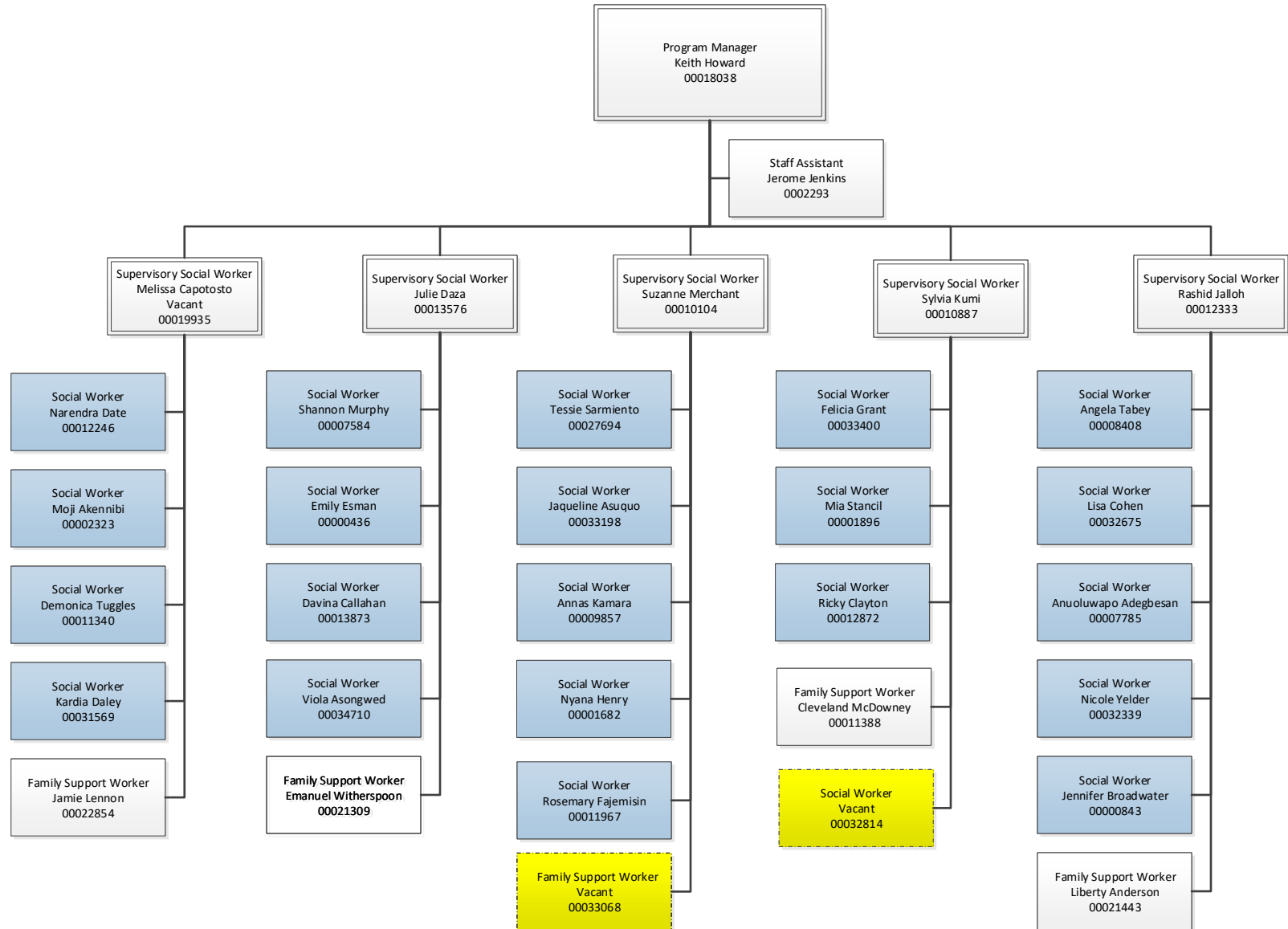
IN-HOME OVERVIEW



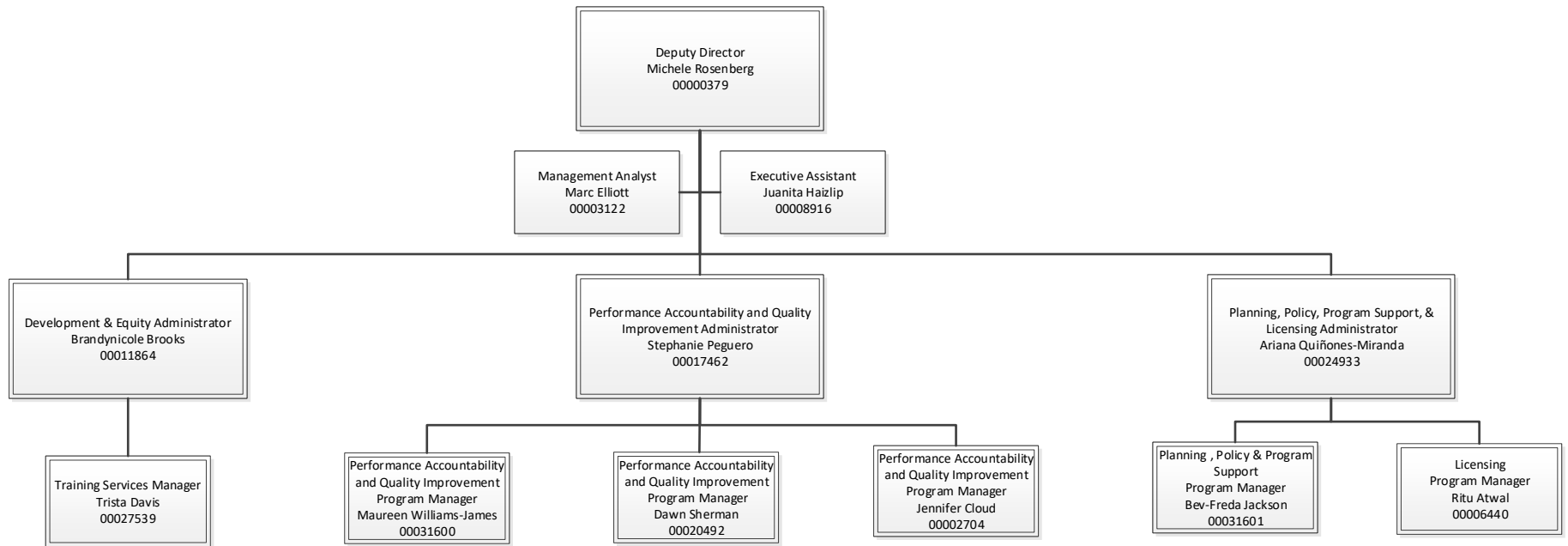
IN-HOME I



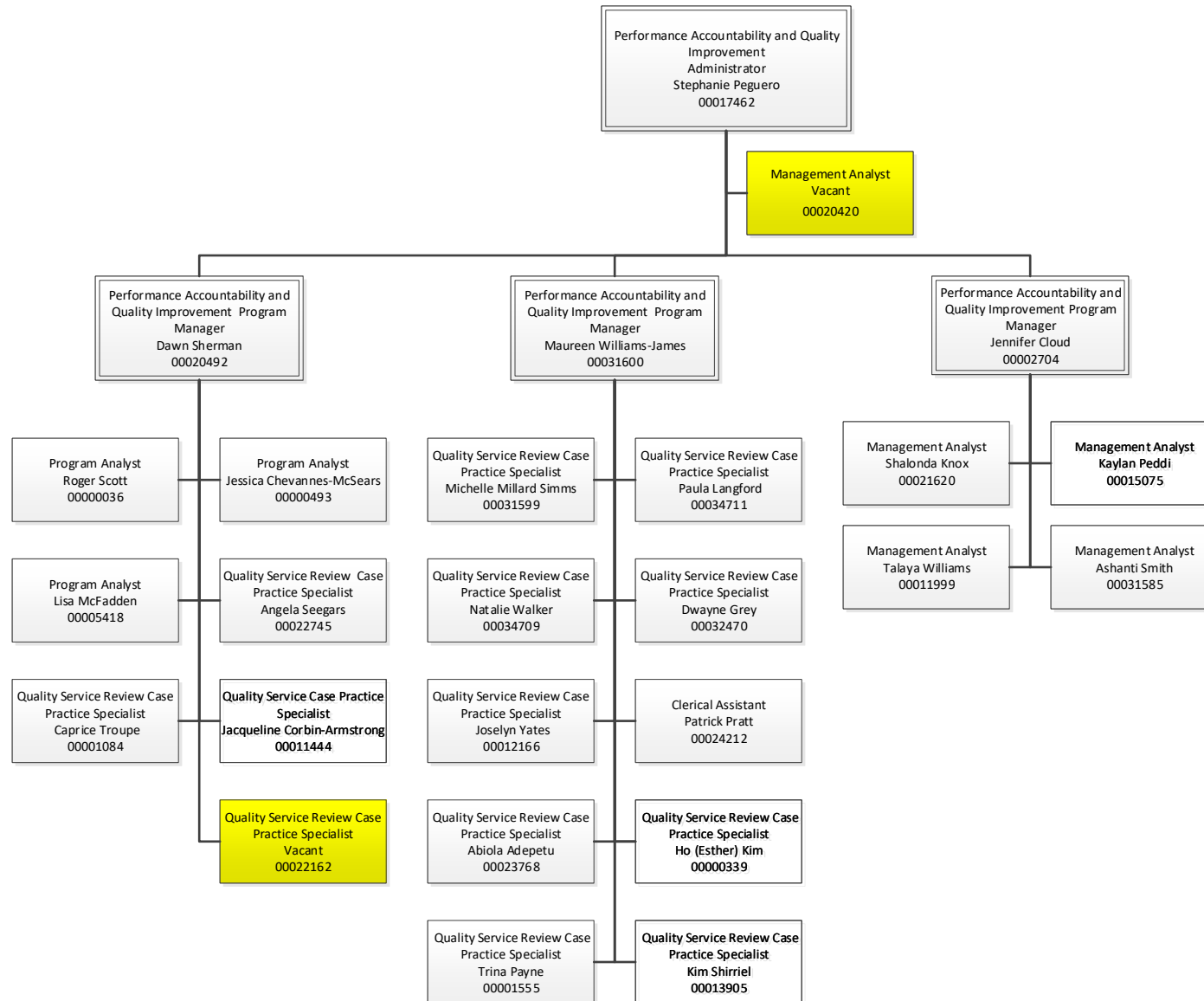
IN-HOME II



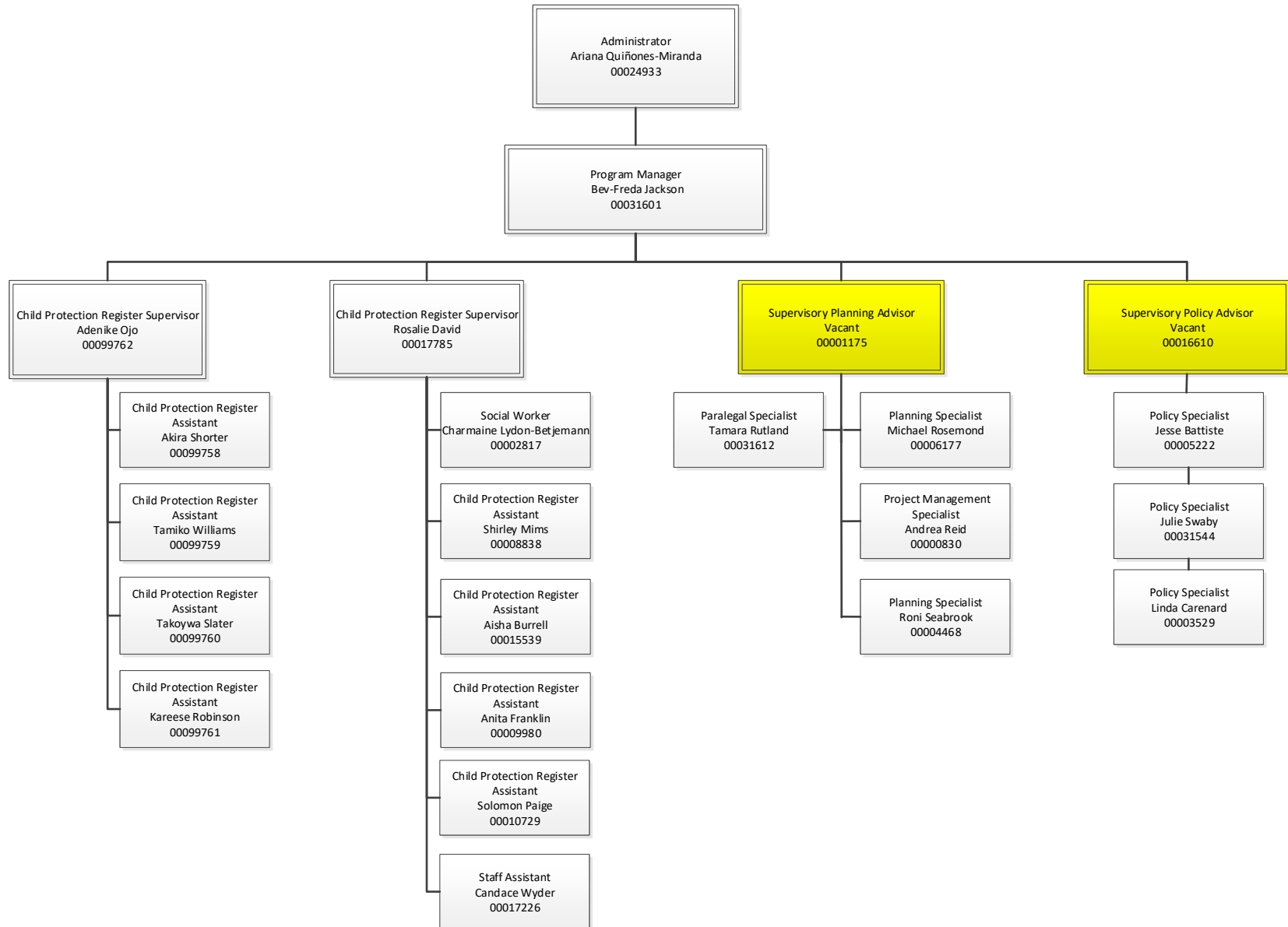
OFFICE OF THE DEPUTY DIRECTOR FOR PLANNING, POLICY & PROGRAM SUPPORT



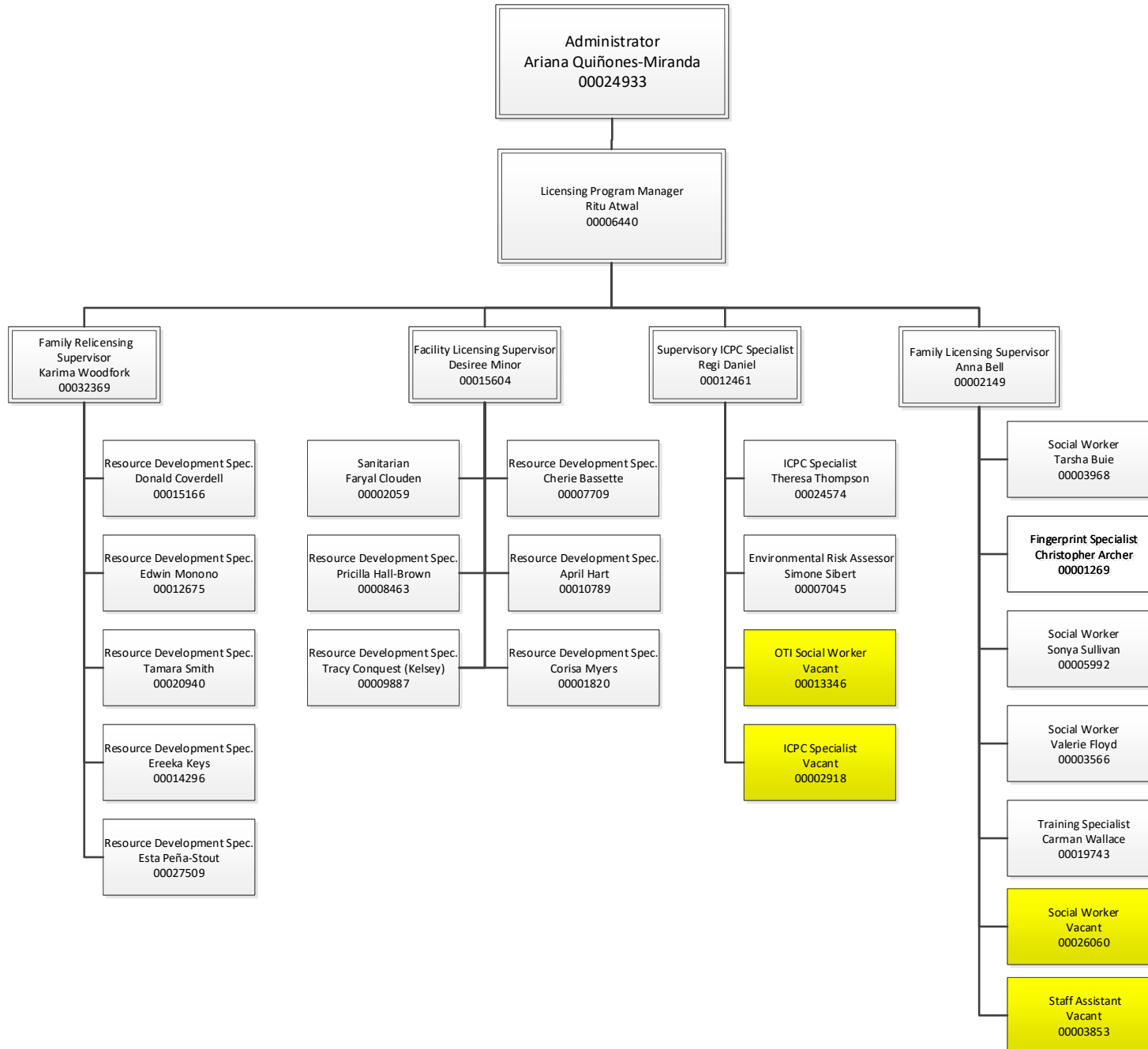
PERFORMANCE ACCOUNTABILITY AND QUALITY IMPROVEMENT ADMINISTRATION



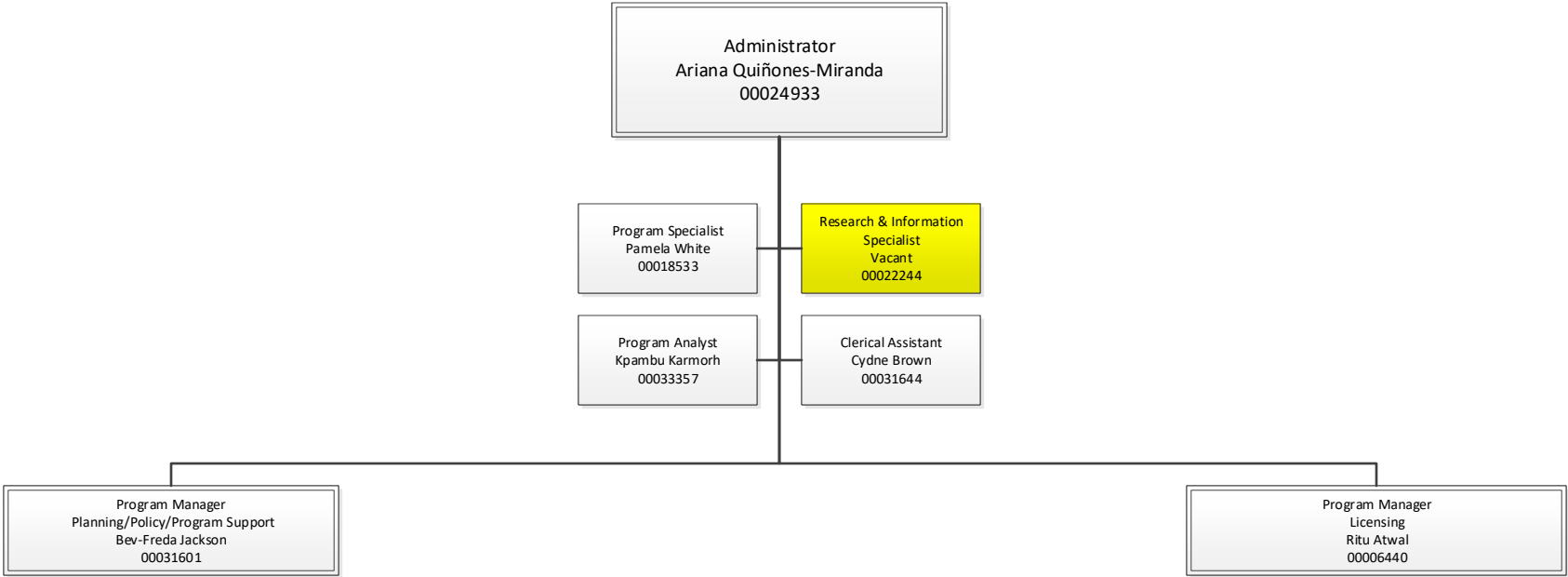
PLANNING, POLICY, PROGRAM SUPPORT



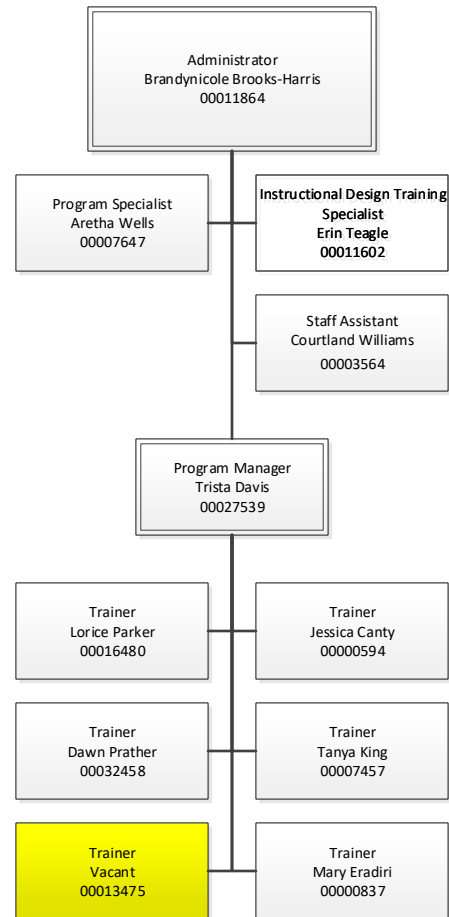
LICENSING DIVISION



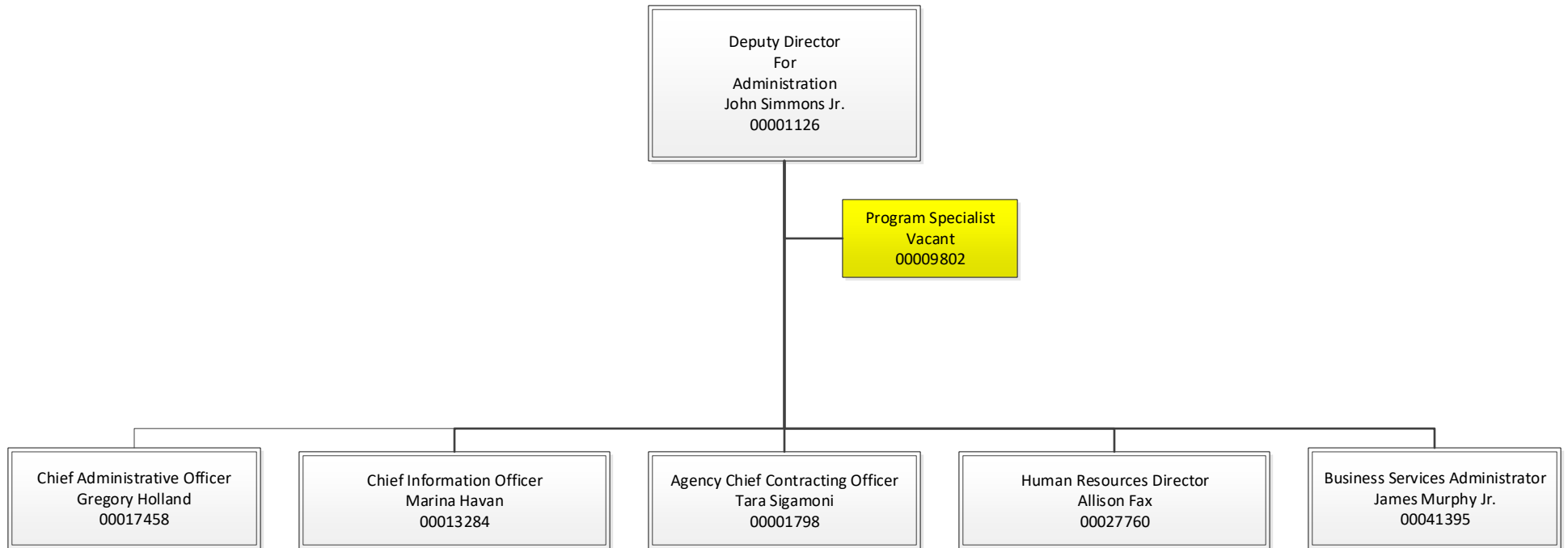
PLANNING, POLICY, PROGRAM SUPPORT & LICENSING ADMINISTRATION



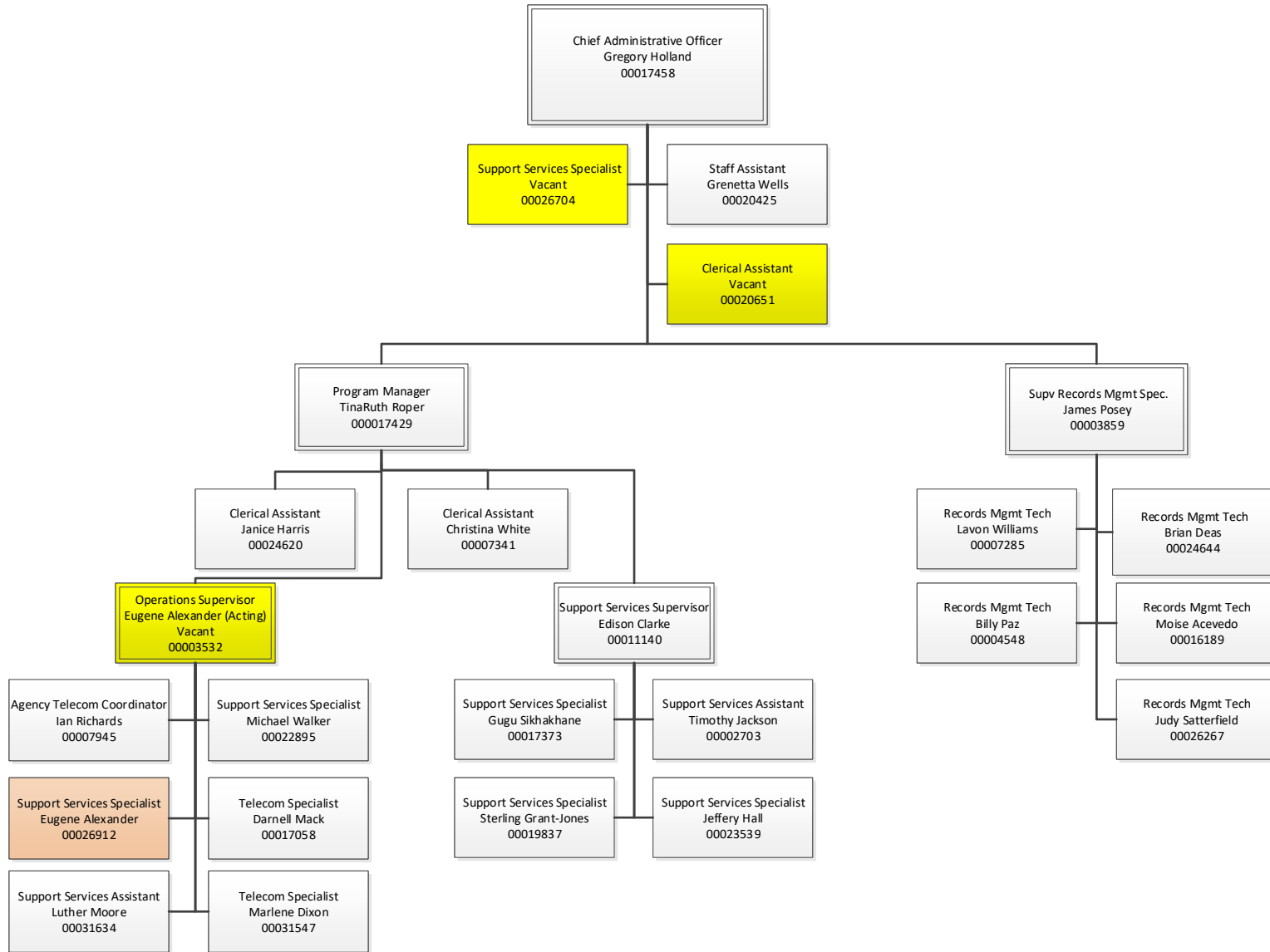
DEVELOPMENT & EQUITY ADMINISTRATION



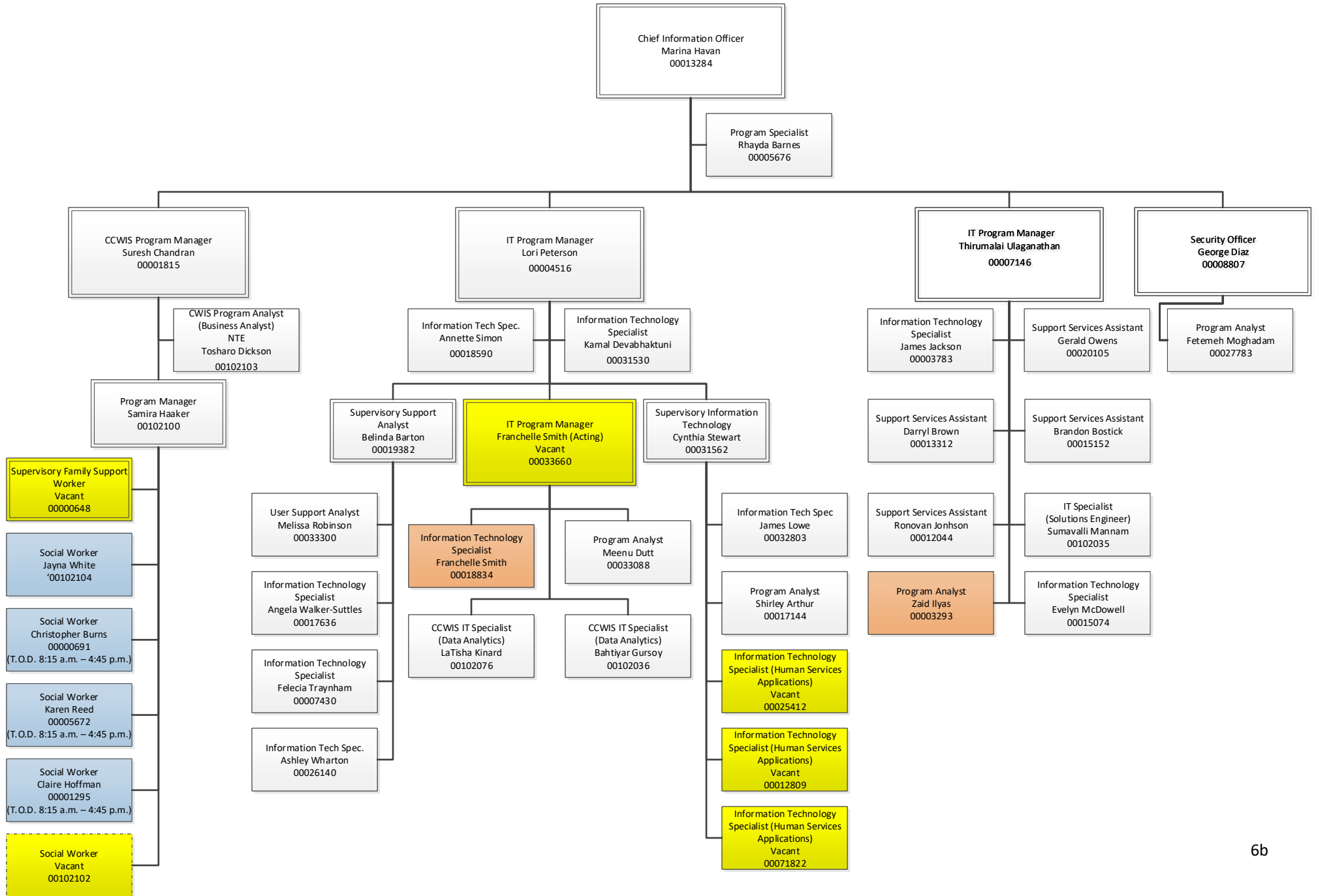
OFFICE OF THE DEPUTY DIRECTOR FOR ADMINISTRATION



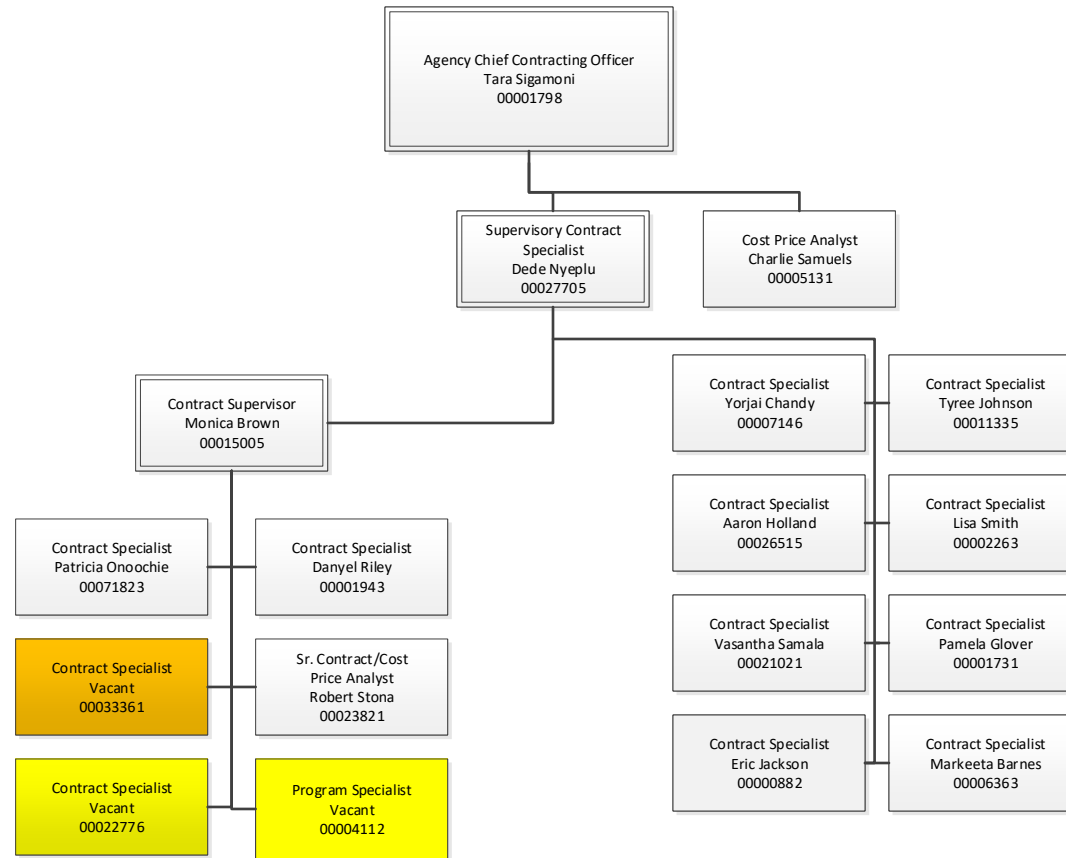
CHIEF ADMINISTRATIVE OFFICE



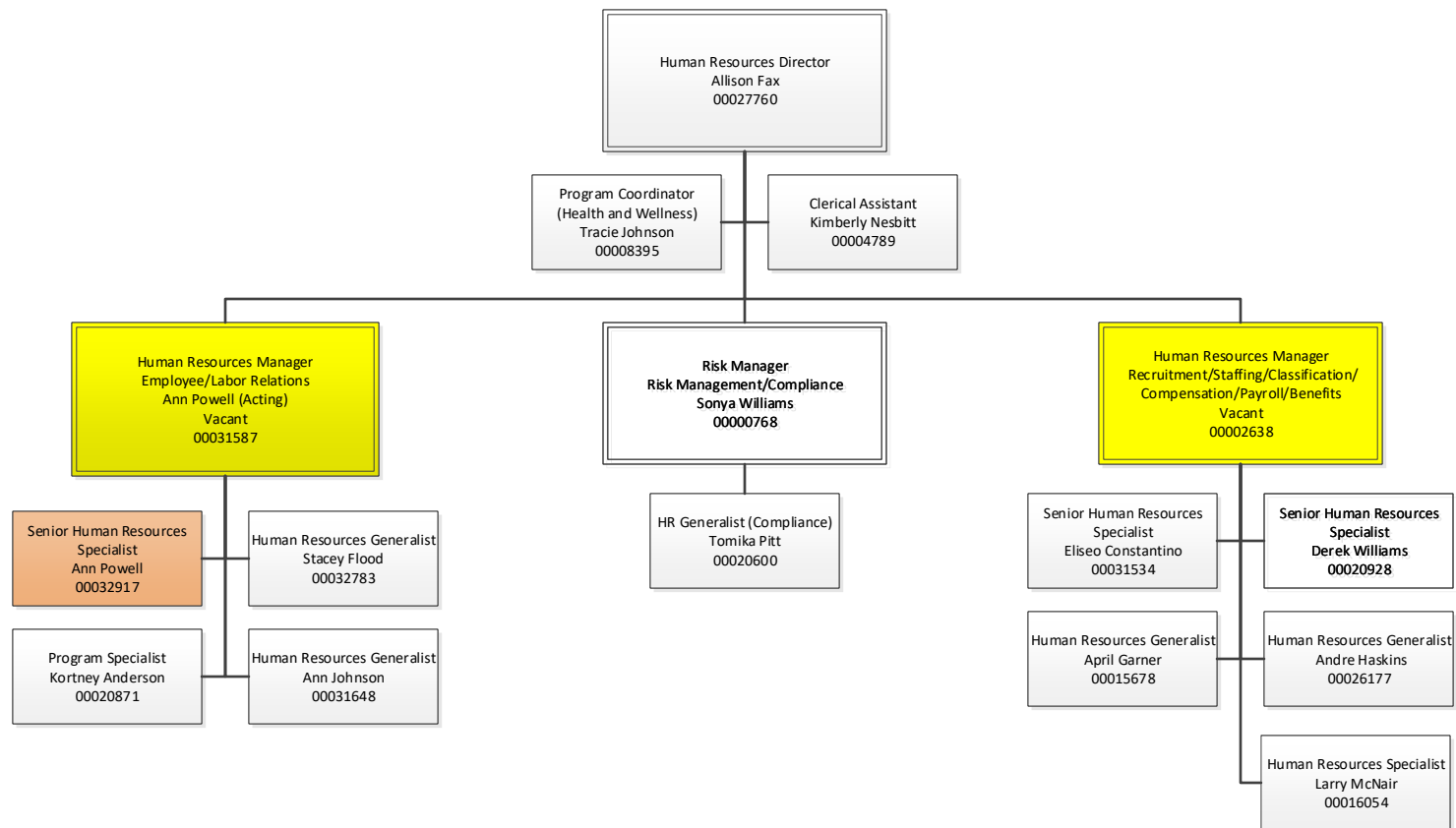
CHILD INFORMATION SYSTEMS ADMINISTRATION



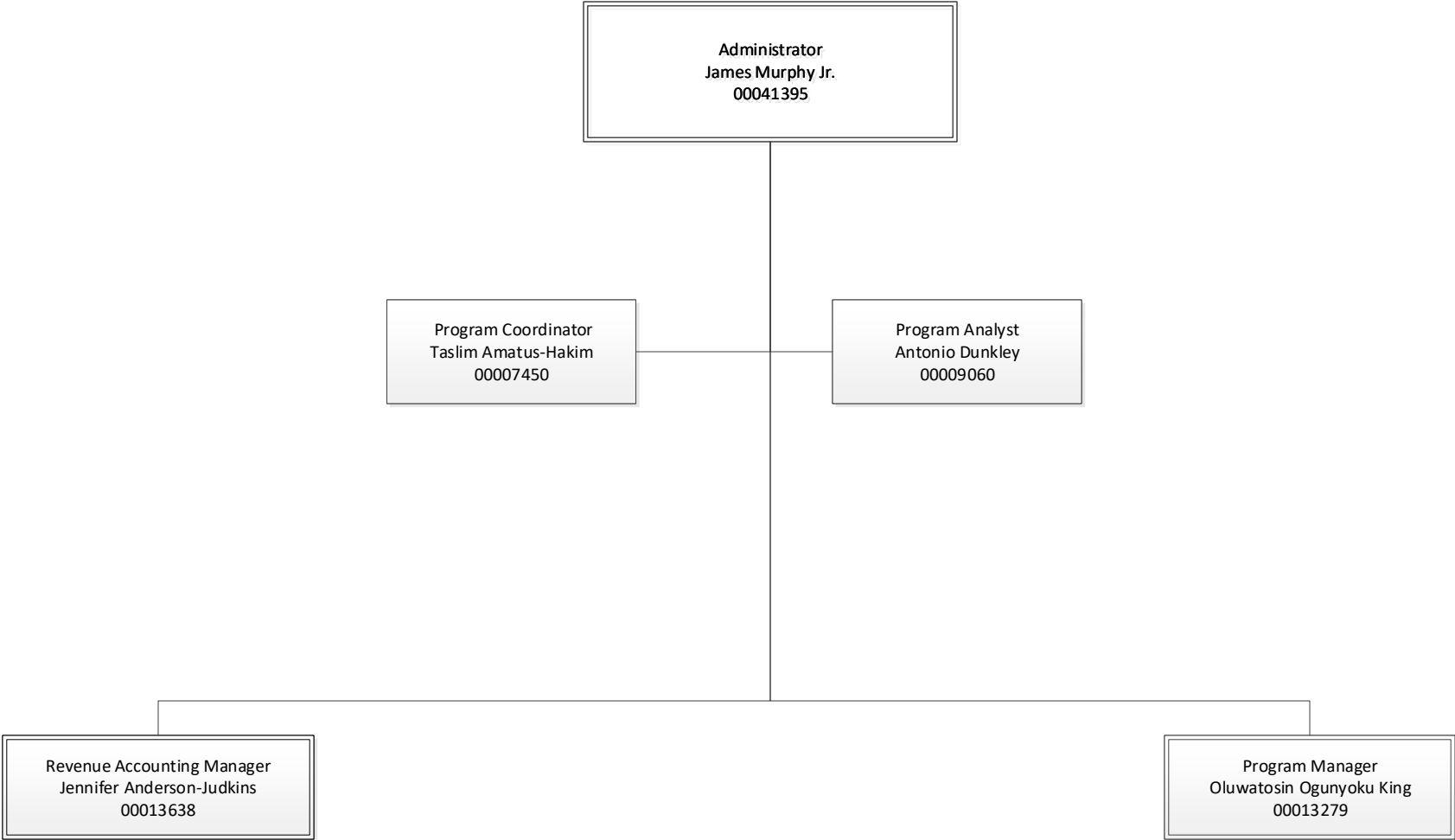
CONTRACTS & PROCUREMENT ADMINISTRATION



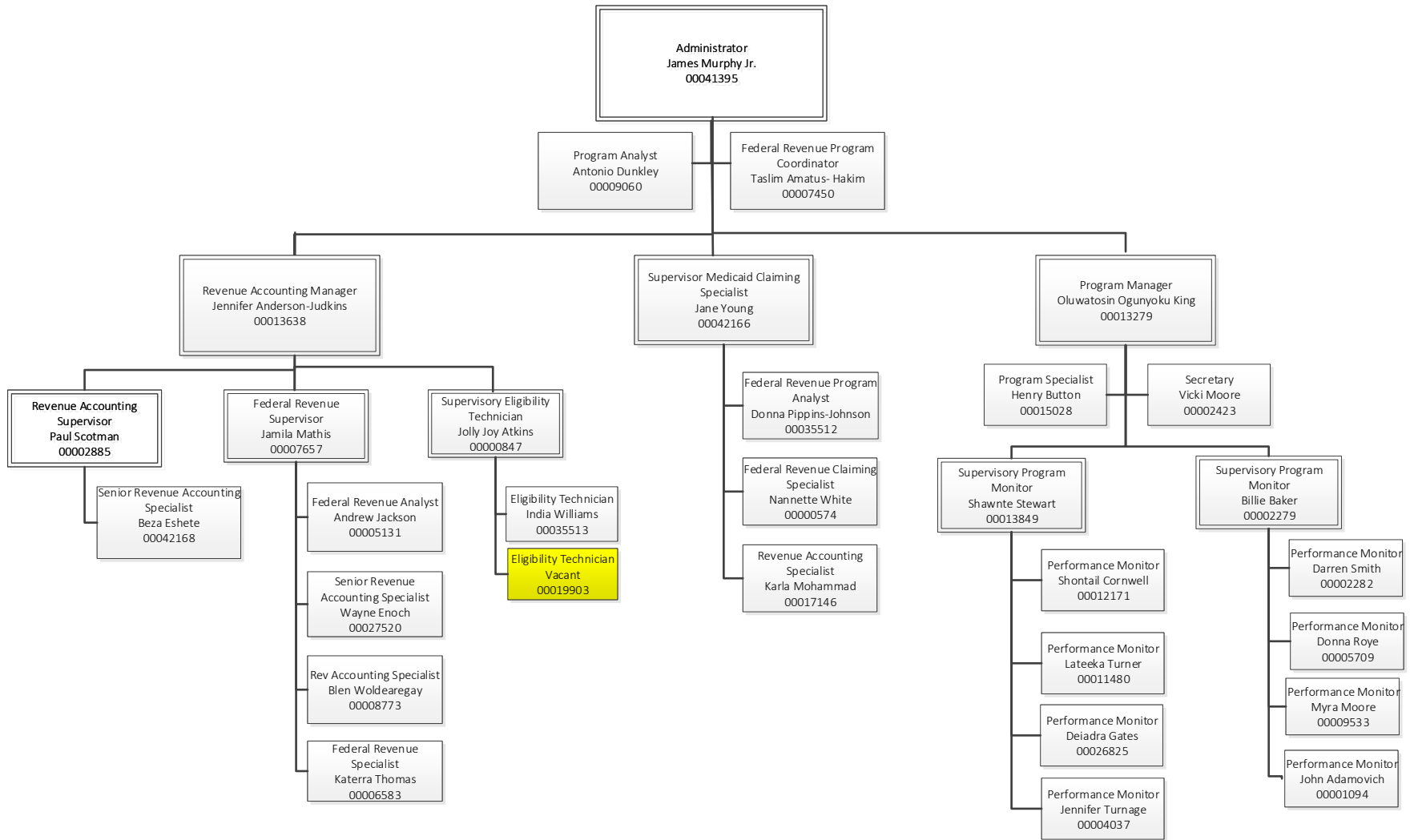
HUMAN RESOURCES ADMINISTRATION



BUSINESS SERVICES ADMINISTRATION OVERVIEW



BUSINESS SERVICES OVERVIEW



CONTRACTS MONITORING DIVISION

