



Government of The District of Columbia Child and Family Services Agency Organizational Chart

Brenda Donald
Director
Fiscal Year 2020

[Key Chart](#)

Vacant Positions

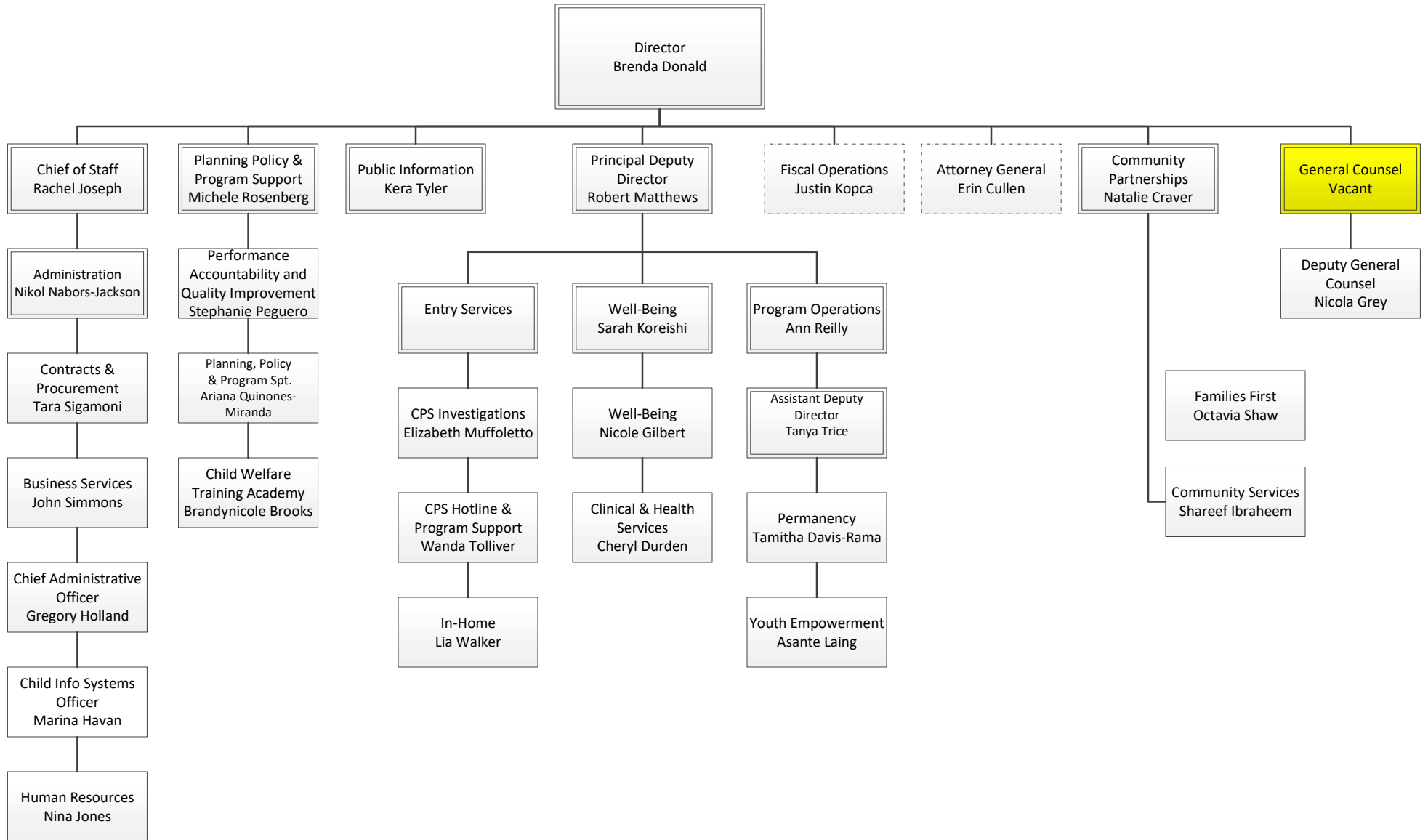
Case Carrying Social Worker

TABLE OF CONTENTS

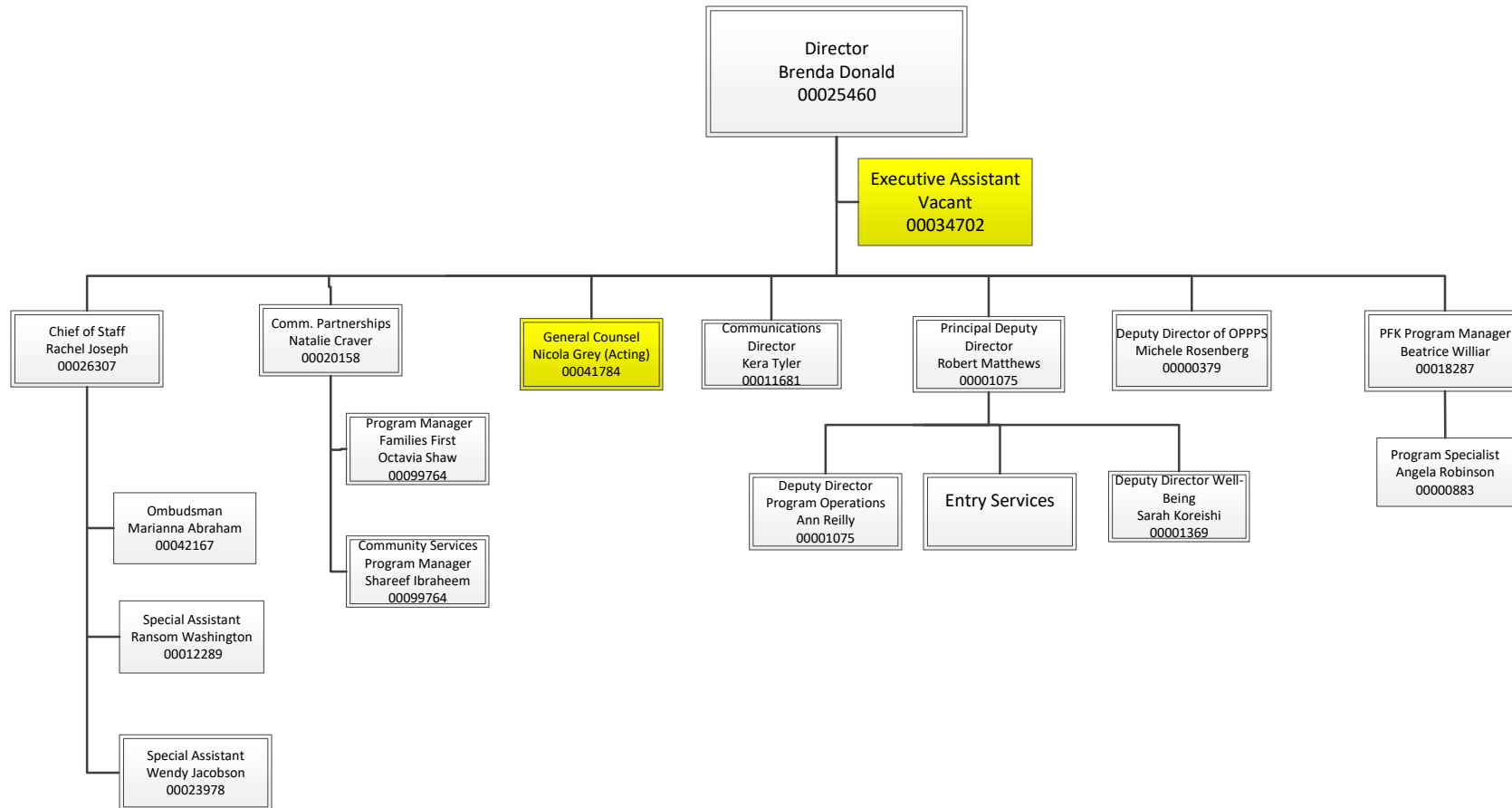
Agency Overview	
Office of the Director	1
Community Partnerships	2
Office of Public Information	3
Office of General Counsel	4
Fiscal Operations Administration	5
<u>Office of the Deputy for Well-Being</u>	6
Office of Well-Being	6a
Health Services Administration	6b
<u>Office of the Deputy Director of Program Operations</u>	7
Permanency Administration	7a
Permanency Administration: I	7b
Permanency Administration: II	7c
Permanency Administration: III	7d
Office of Youth Empowerment	7e
Placement Services Overview	7f
Placement Division	7g
Kinship	7h
Family Resources	7i

<u>Office of the Deputy Director for Entry Services</u>	8
CPS Investigations	8a
CPS Investigations: Division I	8b
CPS Investigations: Division II	8c
CPS Investigations: Division III	8d
CPS Investigations: Division IV	8e
CPS Support Services	8f
CPS Hotline	8g
In -Home Overview	8h
In-Home I	8i
In-Home II	8j
<u>Office of the Deputy Director for Planning</u>	9
Performance & Accountability	9a
Planning, Policy & Program Support	9b
Planning & Policy Division	9c
Program Support	9d
Child Welfare Training Services	9e
<u>Office of the Deputy Director for Administration</u>	10
Chief Administrative Office Administration	10a
Child Information Systems Administration	10b
Contracts and Procurement Administration	10c
Human Resources Administration	10d
Business Services Administration Overview	10e
Business Services	10f
Contracts Monitoring Division	10g

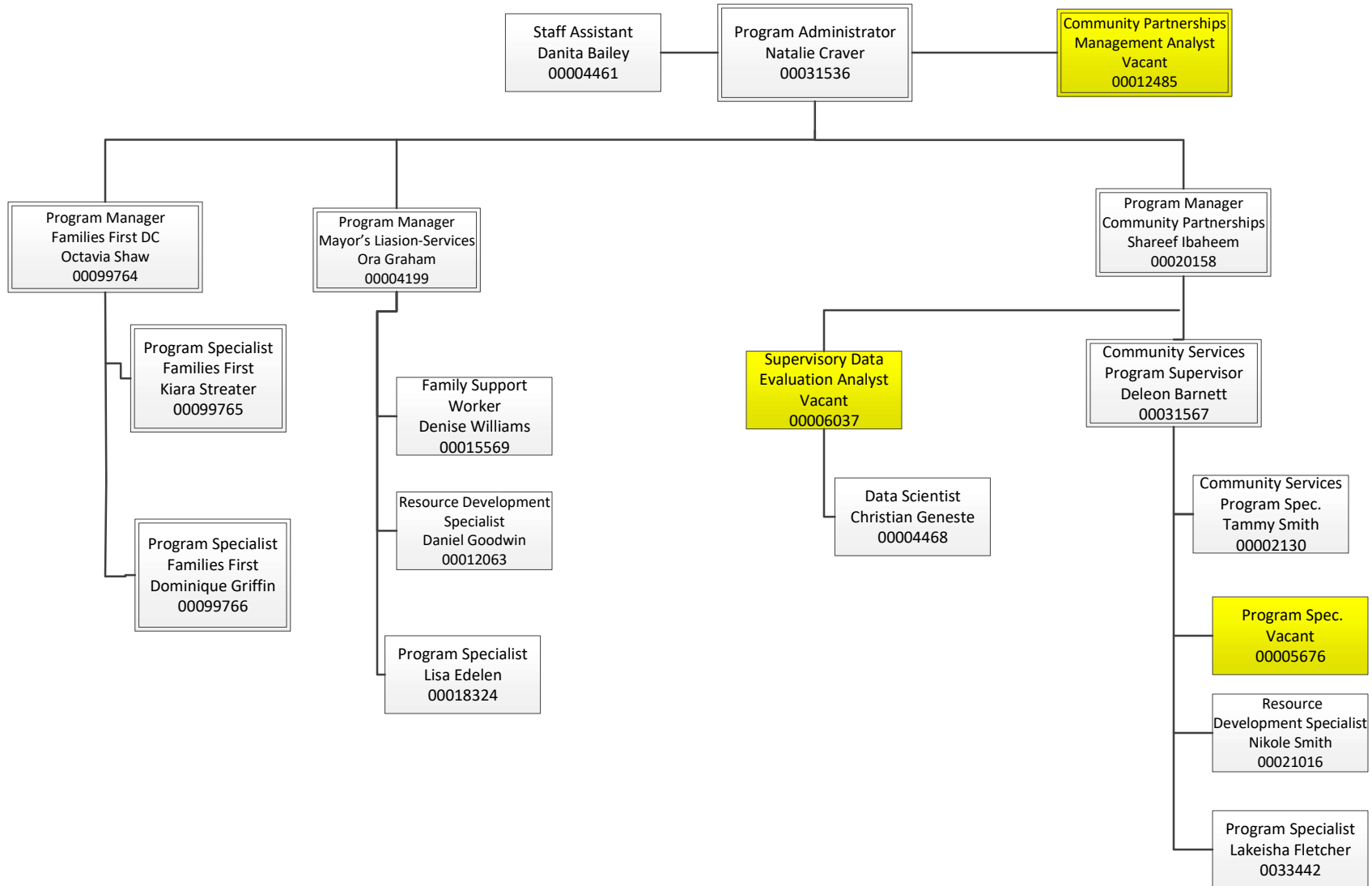
CHILD AND FAMILY SERVICES AGENCY-OVERVIEW



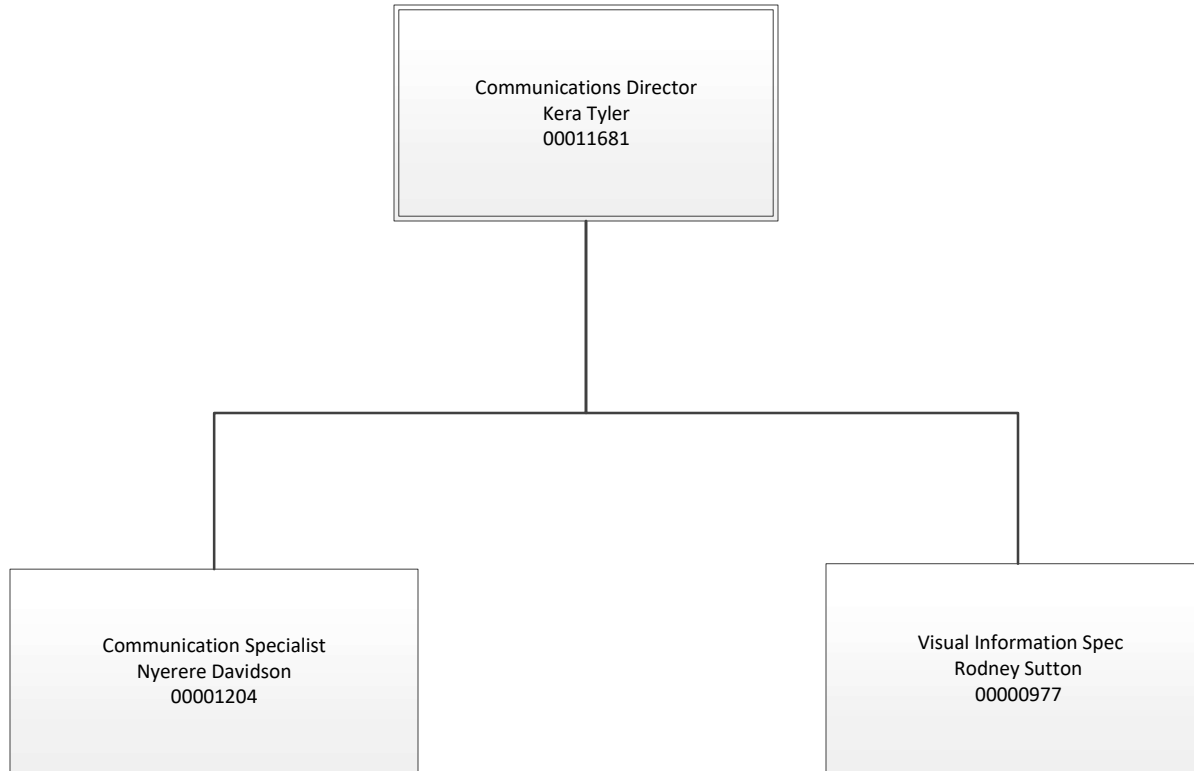
OFFICE OF THE DIRECTOR



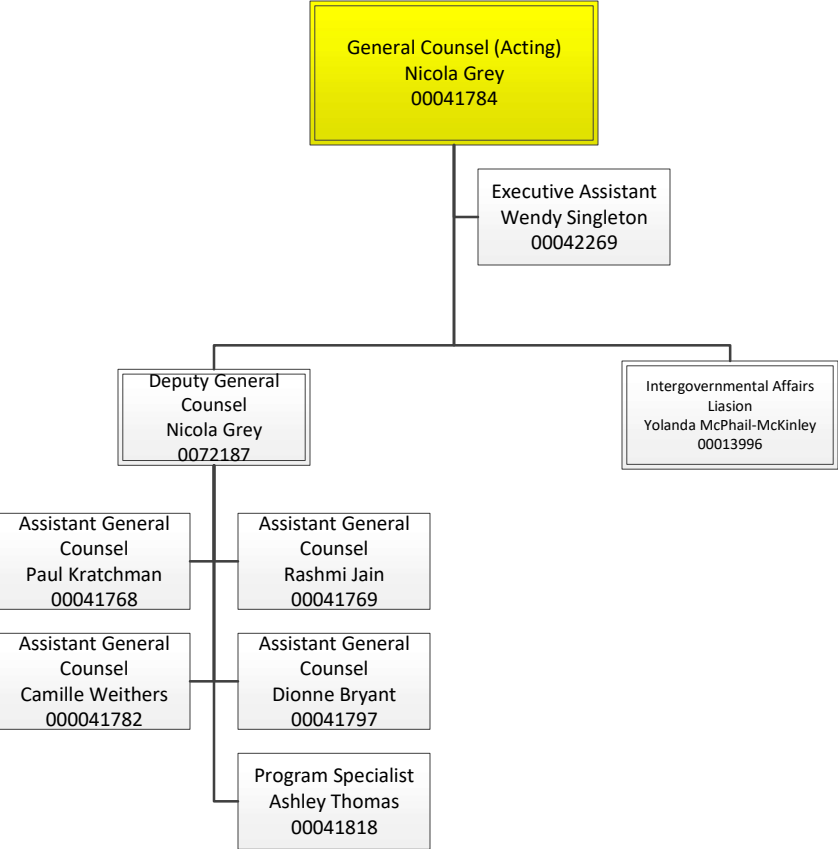
OFFICE OF COMMUNITY PARTNERSHIPS



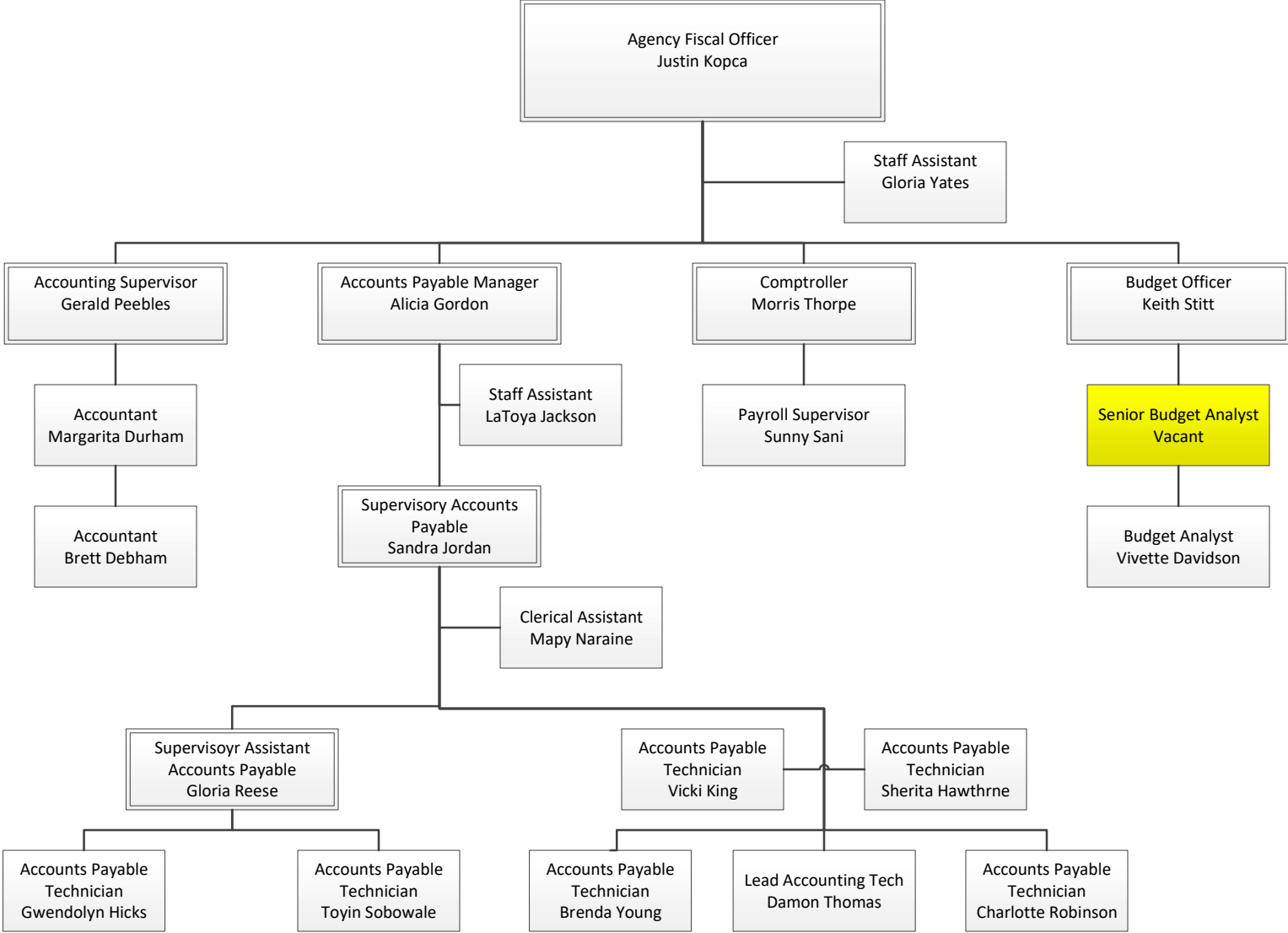
OFFICE OF PUBLIC INFORMATION



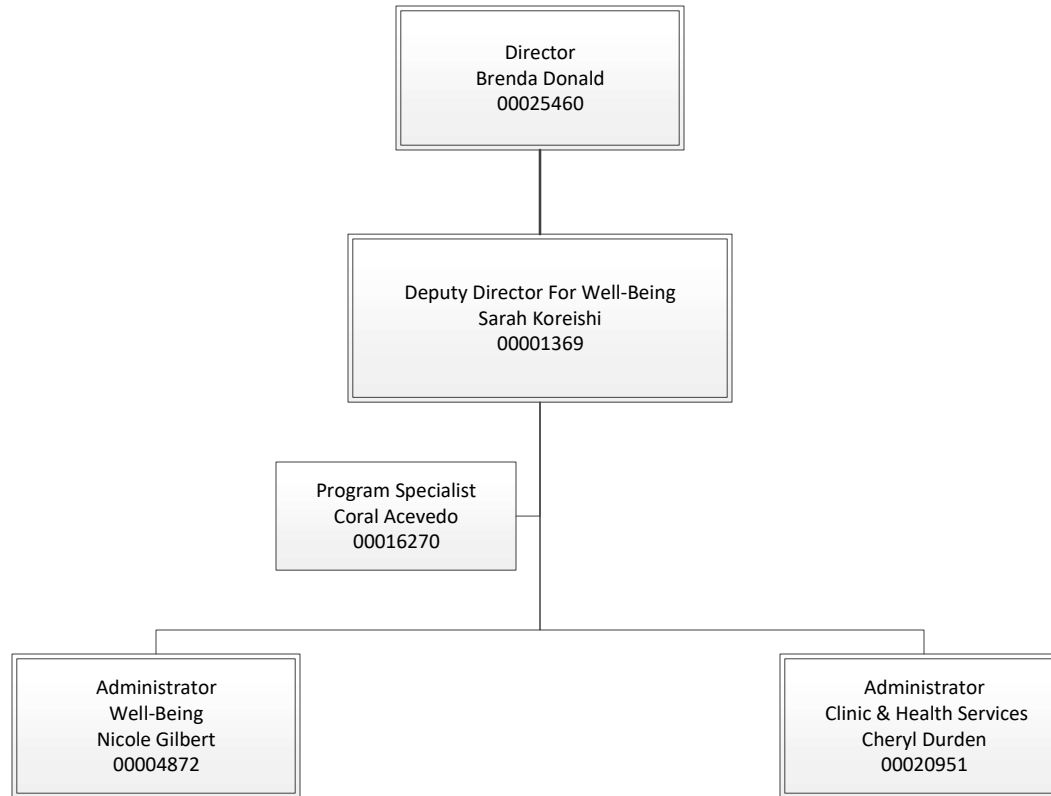
OFFICE OF THE GENERAL COUNSEL



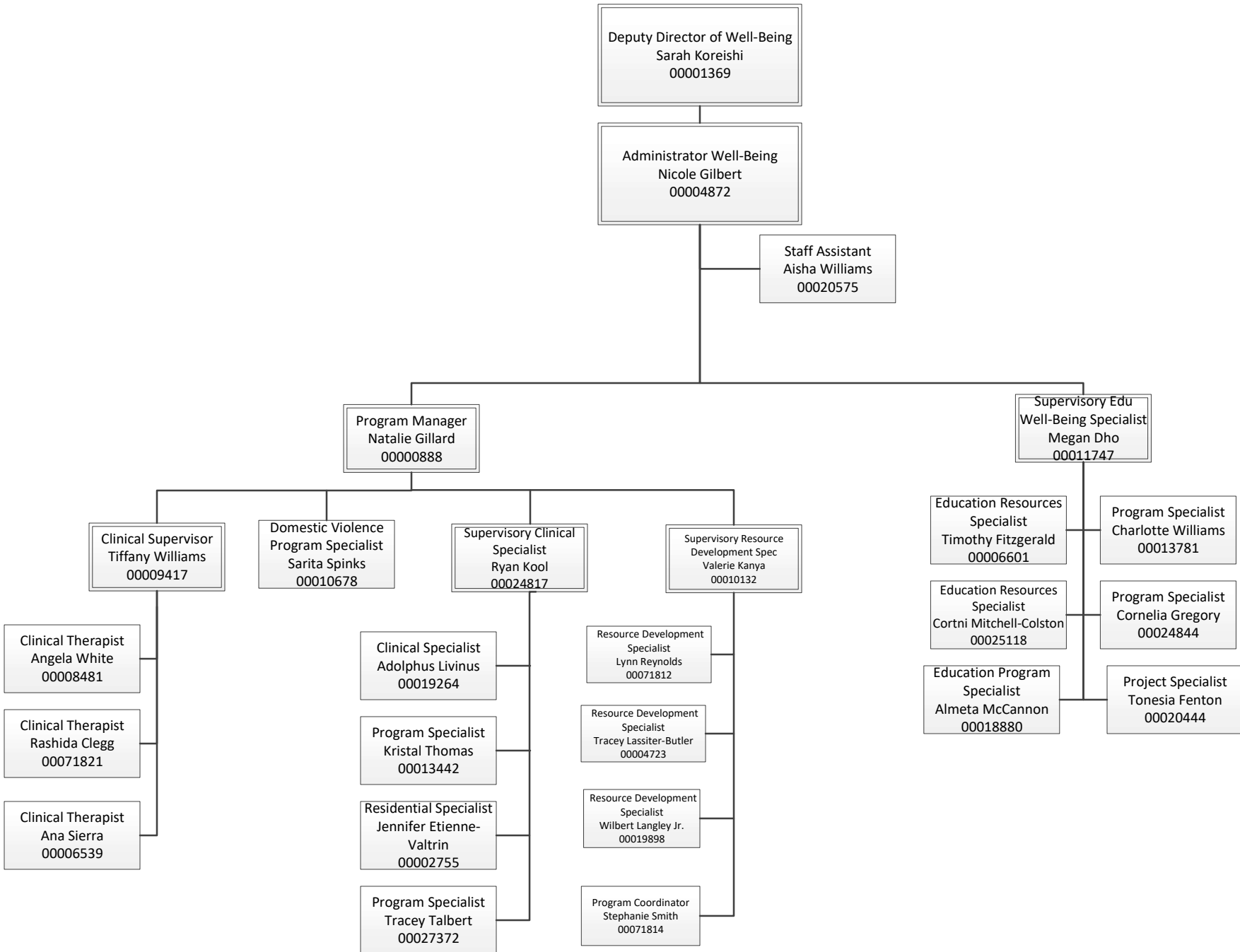
OFFICE OF THE CHIEF FINANCIAL OFFICER



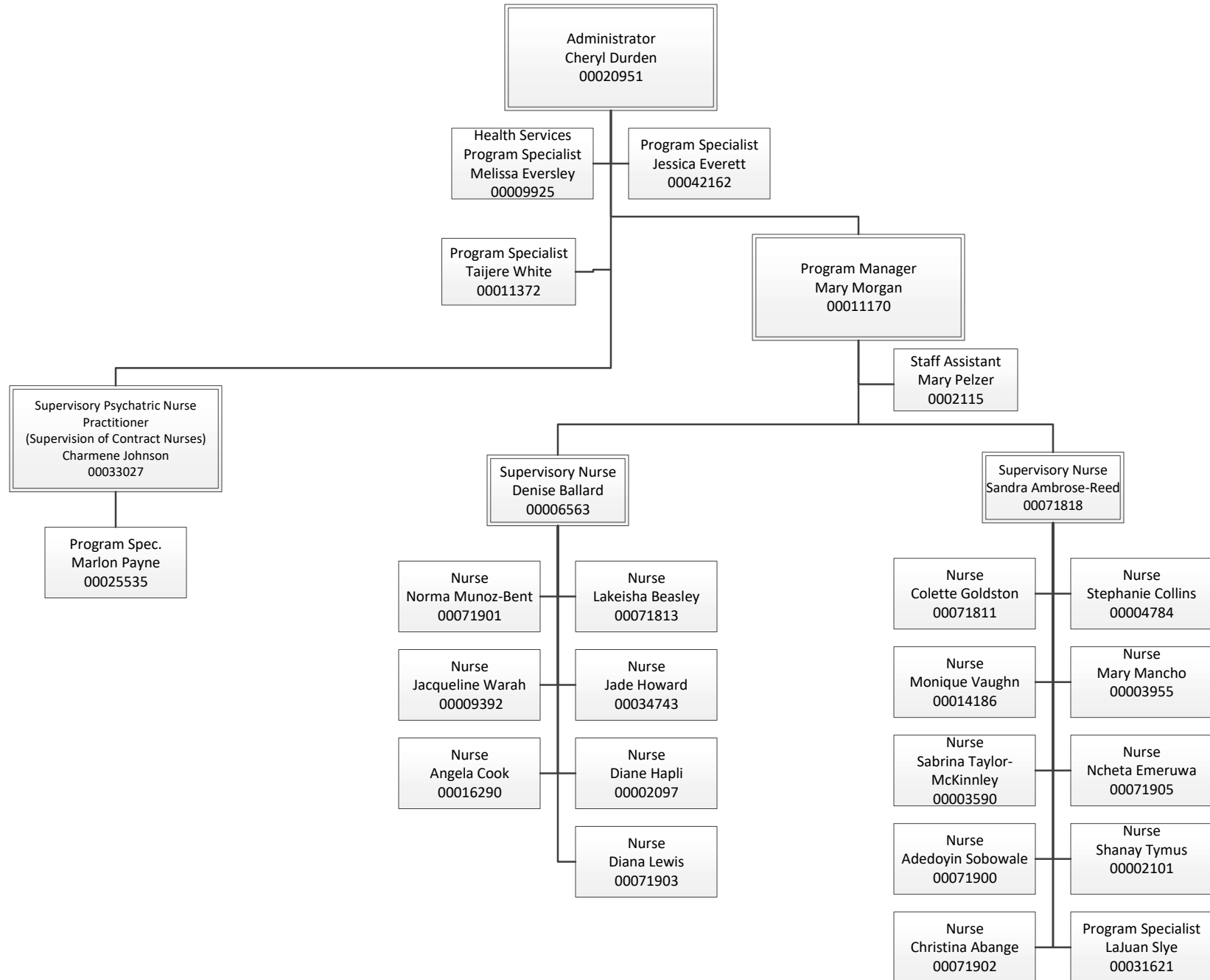
OFFICE OF THE DEPUTY DIRECTOR FOR WELL-BEING



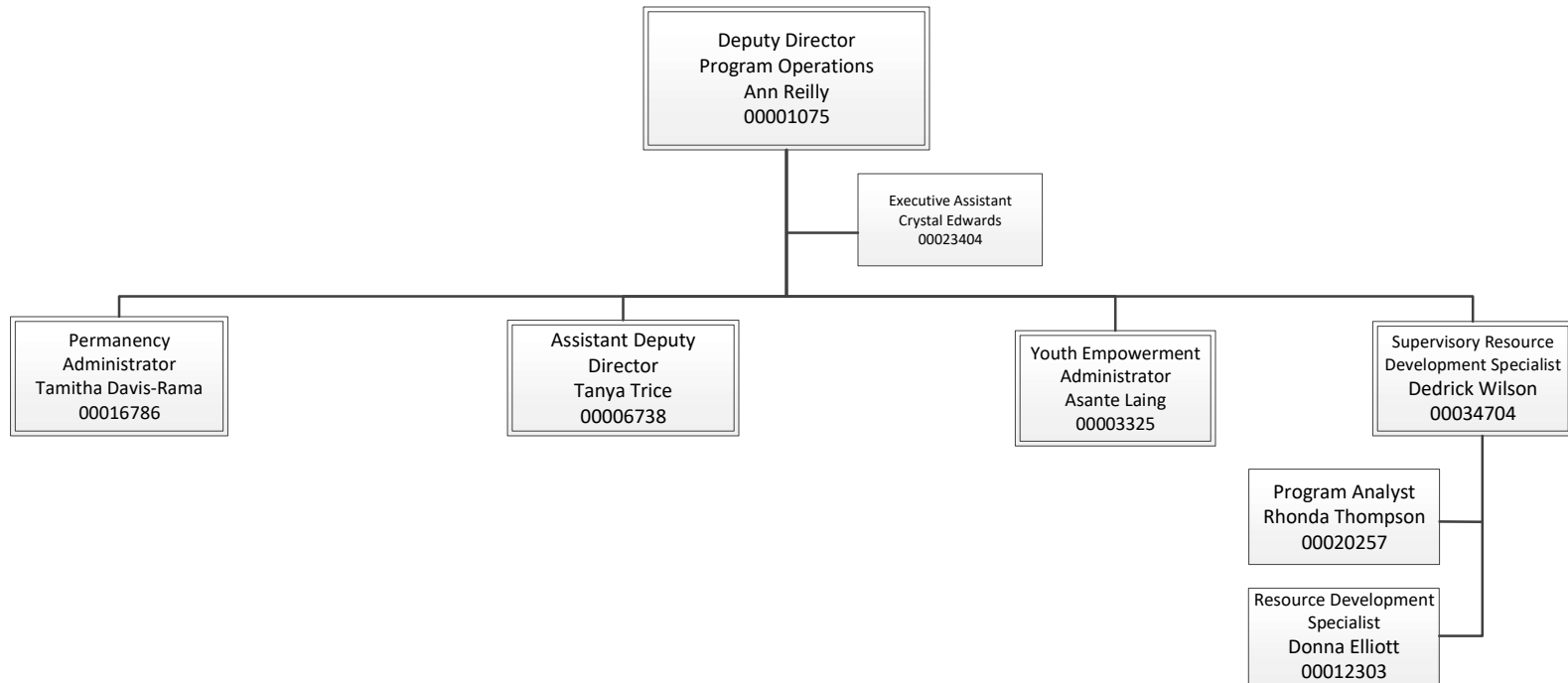
DIRECTOR OF WELL-BEING



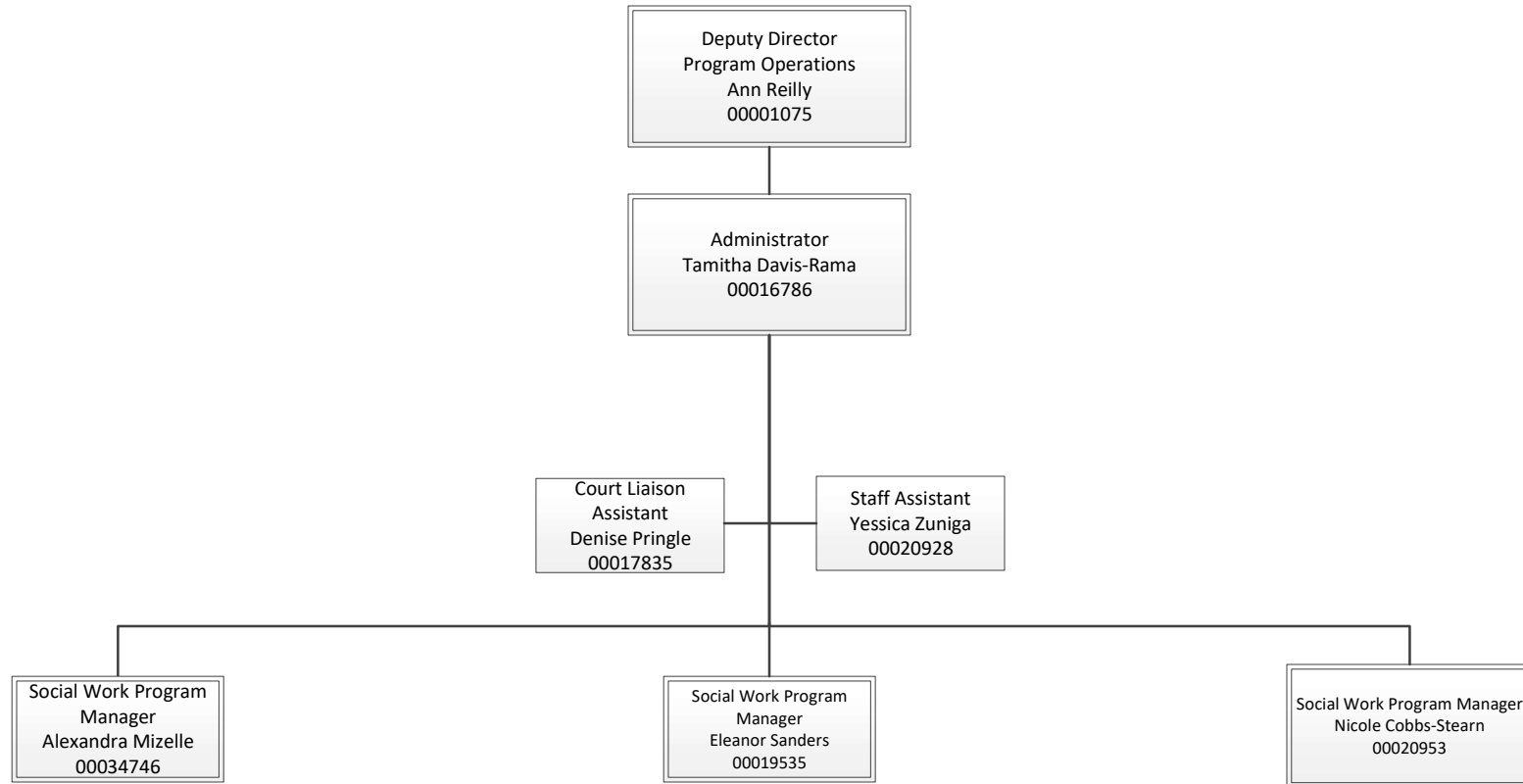
HEALTH SERVICES ADMINISTRATION



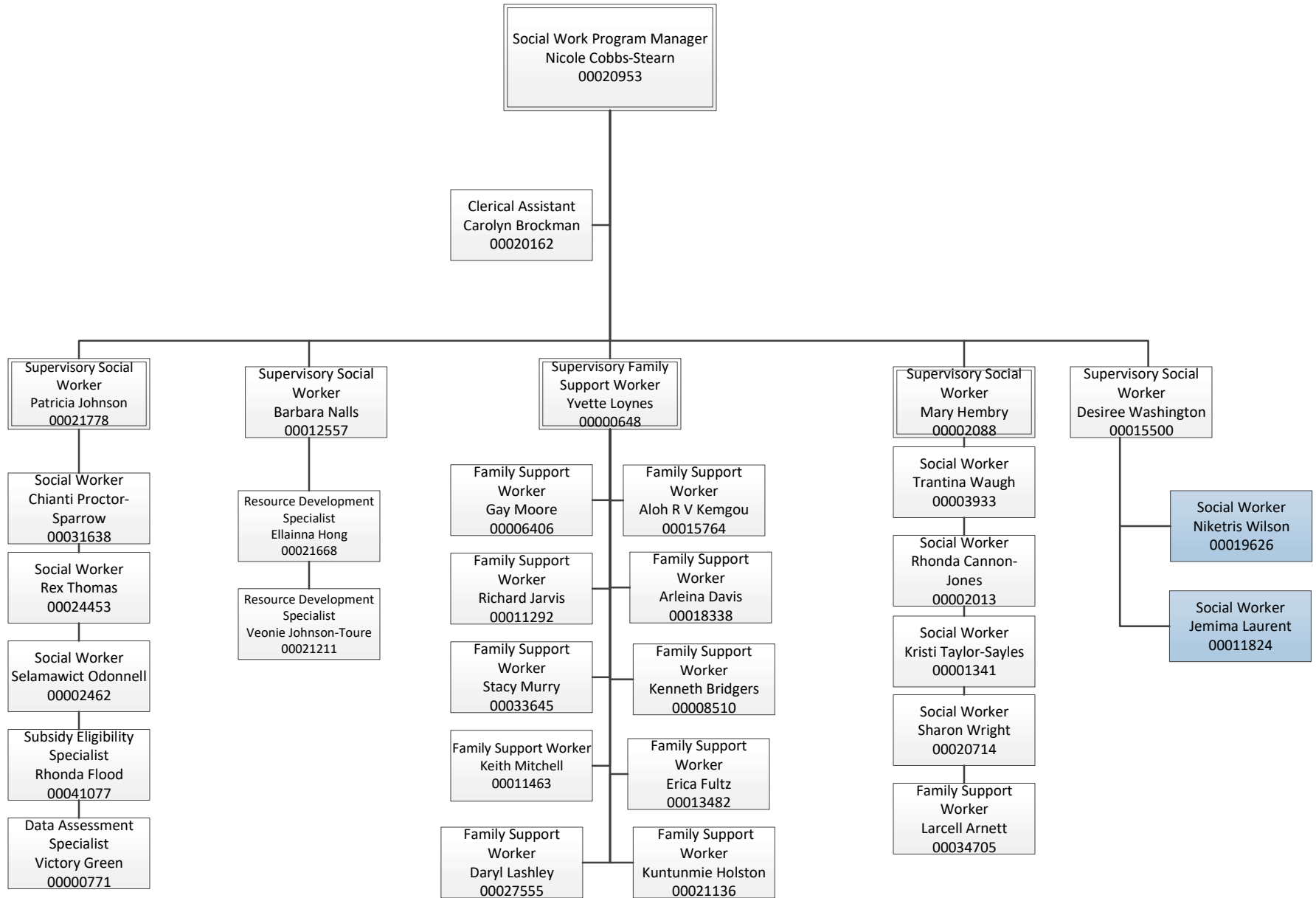
OFFICE OF THE DEPUTY DIRECTOR FOR PROGRAM OPERATIONS



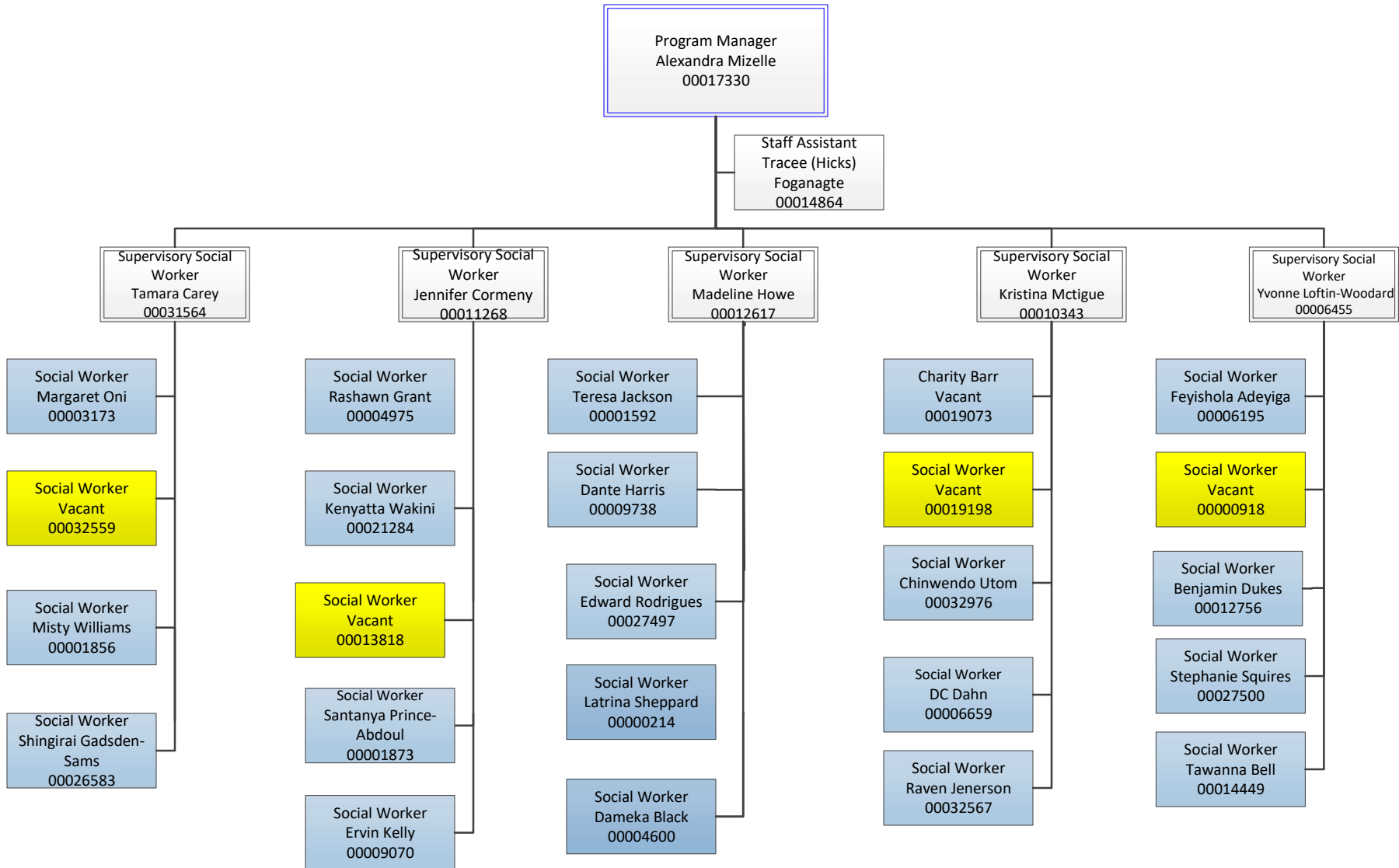
PERMANENCY ADMINISTRATION



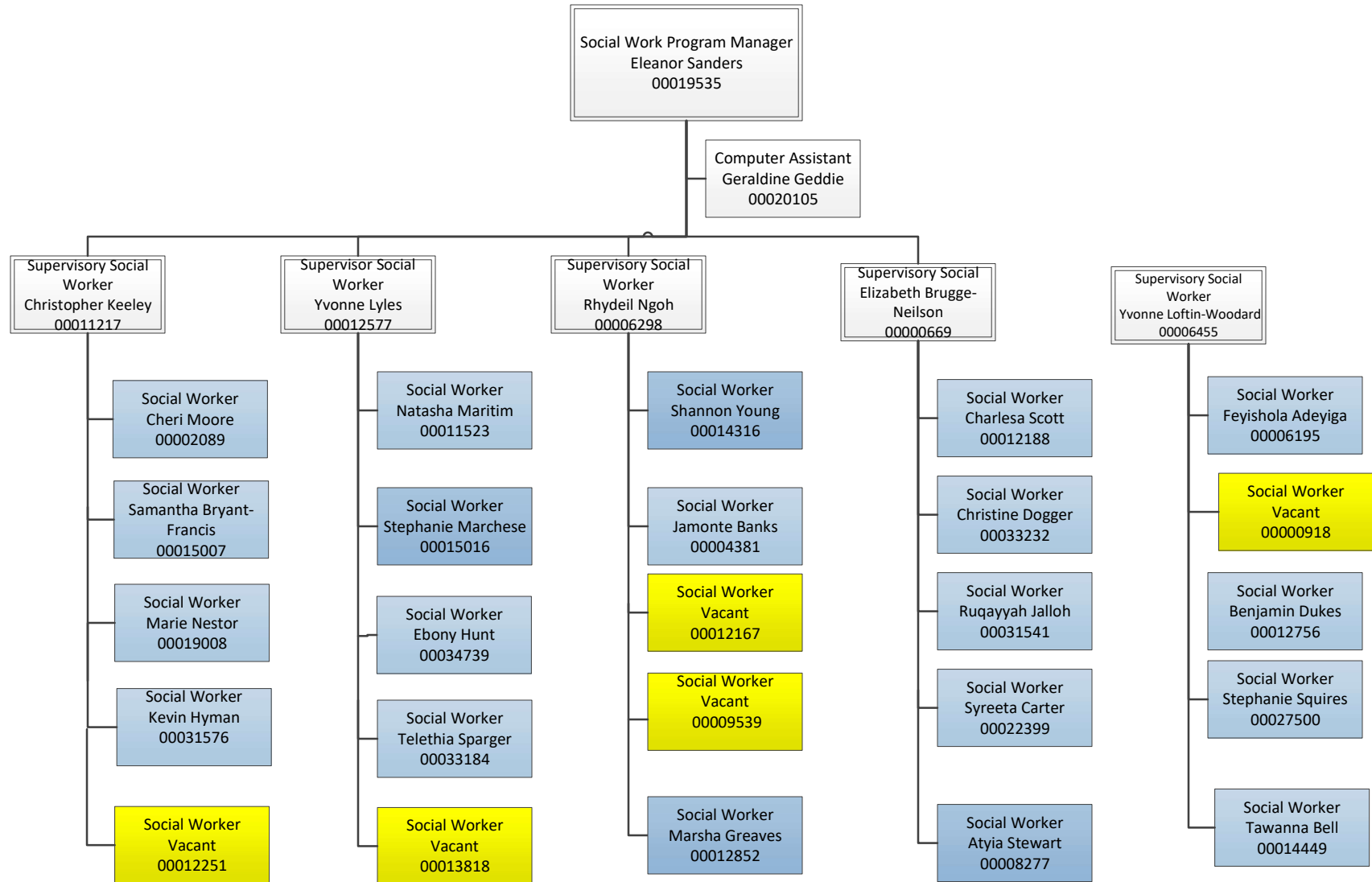
PERMANENCY ADMINISTRATION I



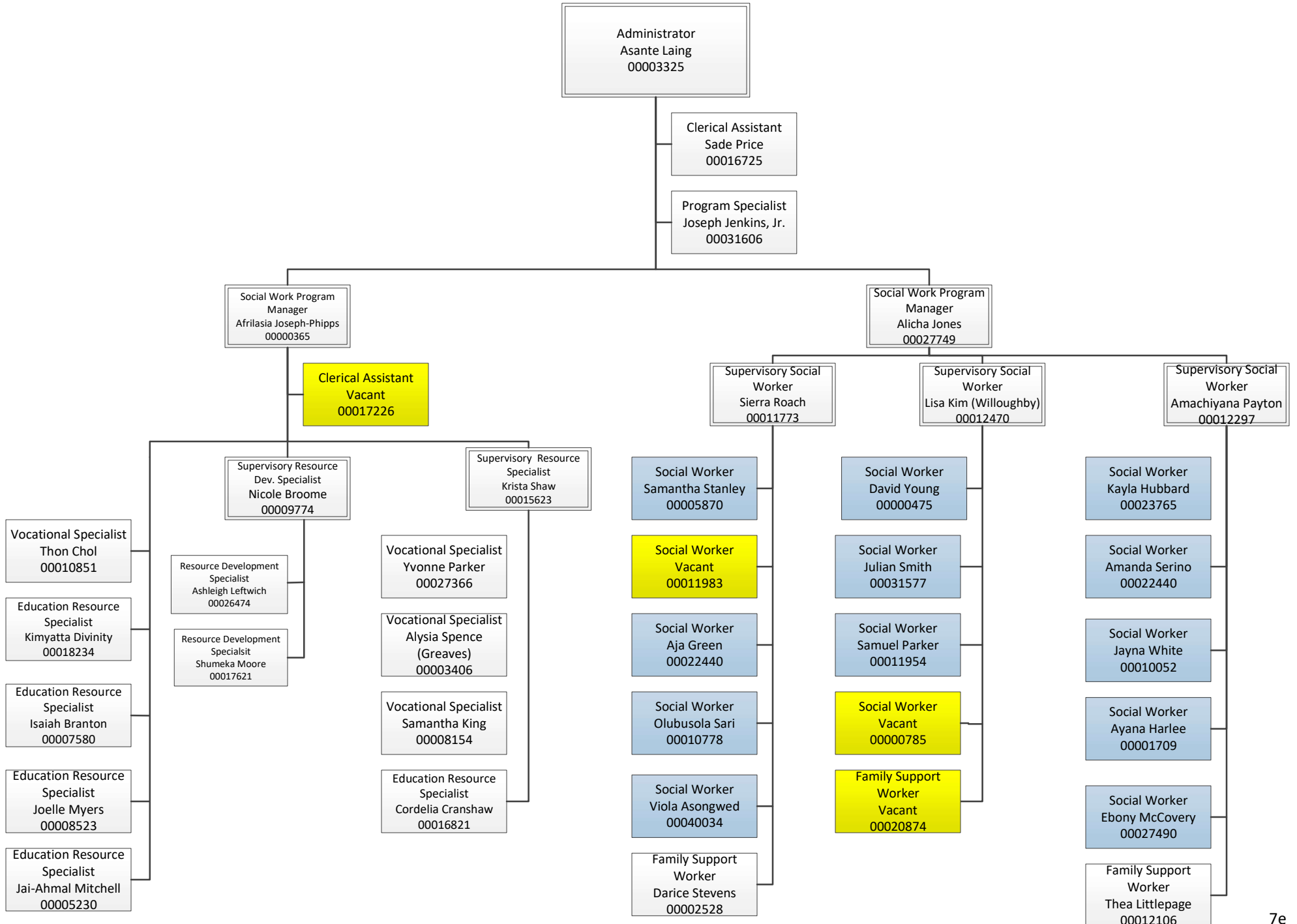
PERMANENCY ADMINISTRATION II



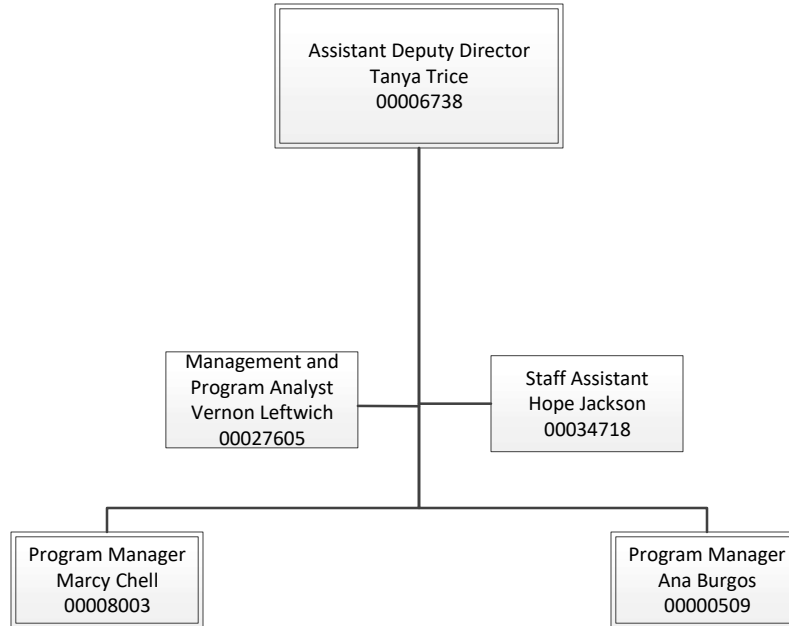
PERMANENCY ADMINISTRATION III



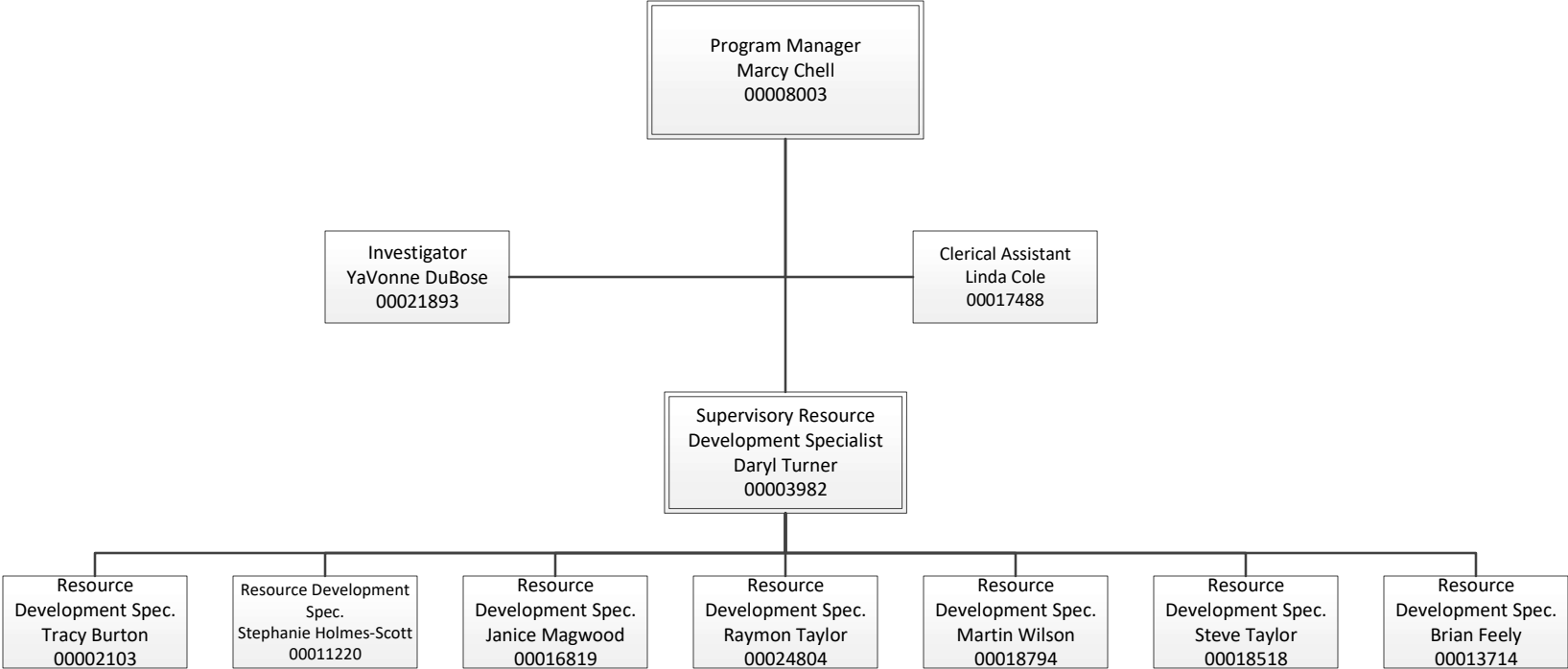
OFFICE OF YOUTH EMPOWERMENT



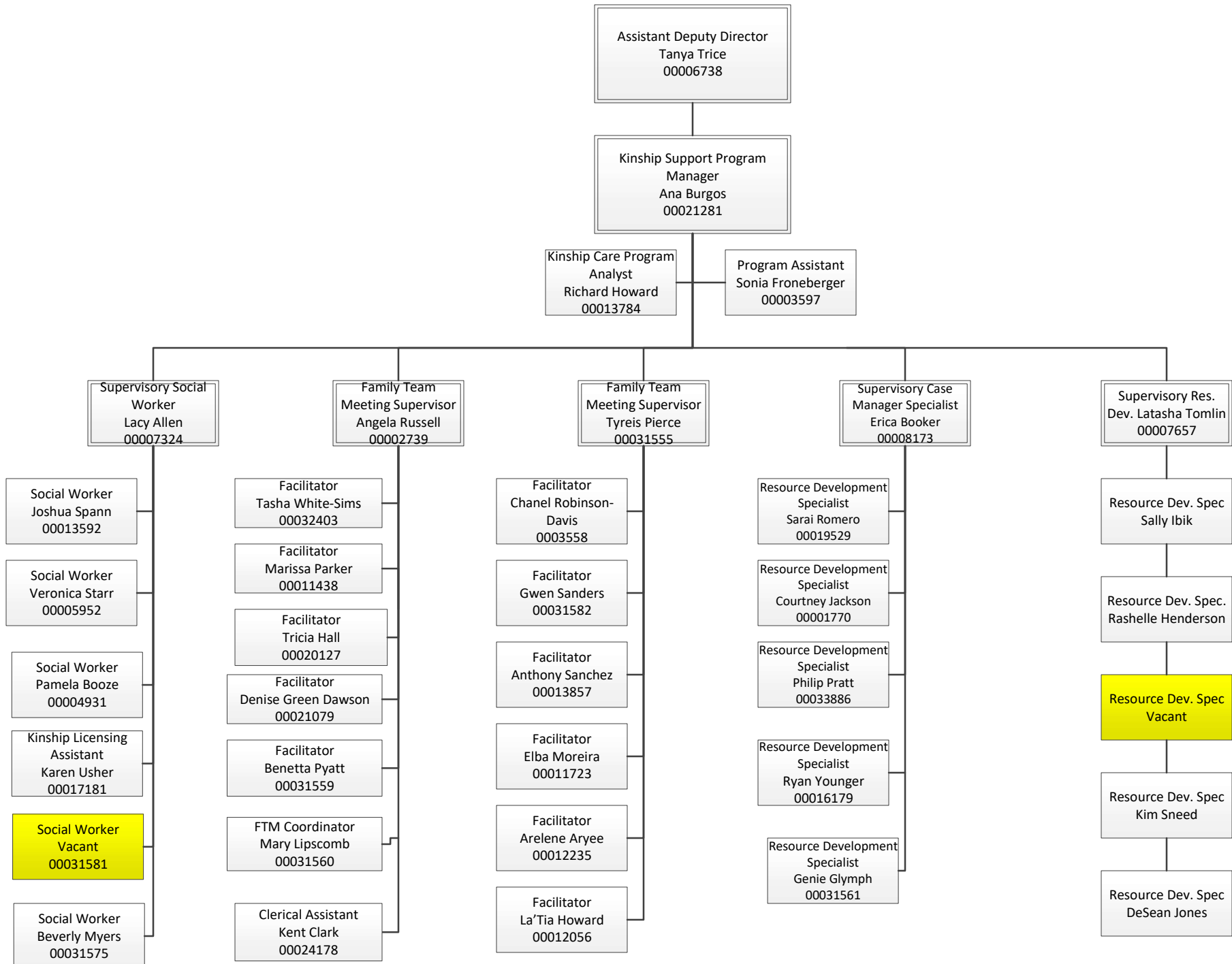
PLACEMENT SERVICES DIVISION OVERVIEW



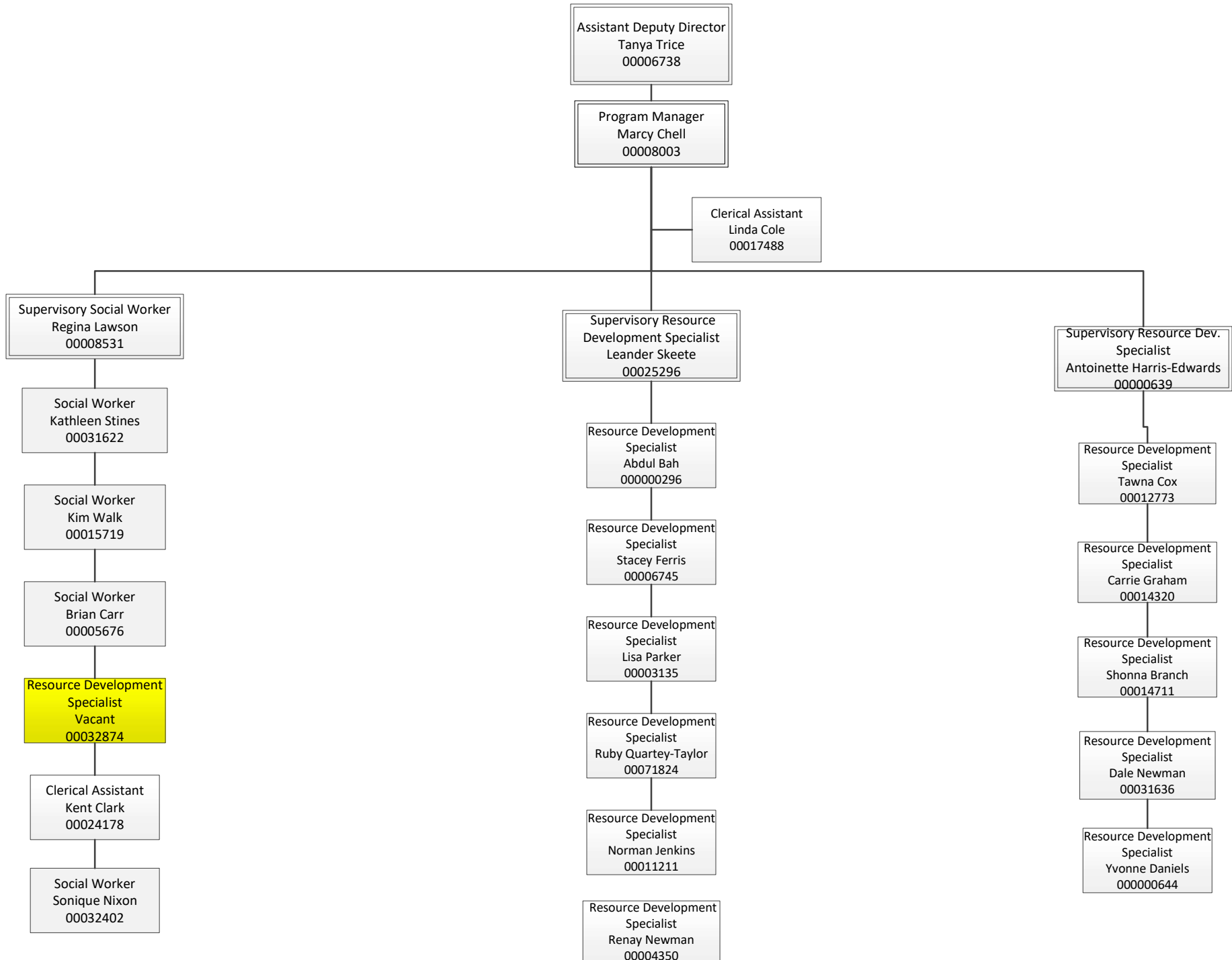
PLACEMENT SERVICES



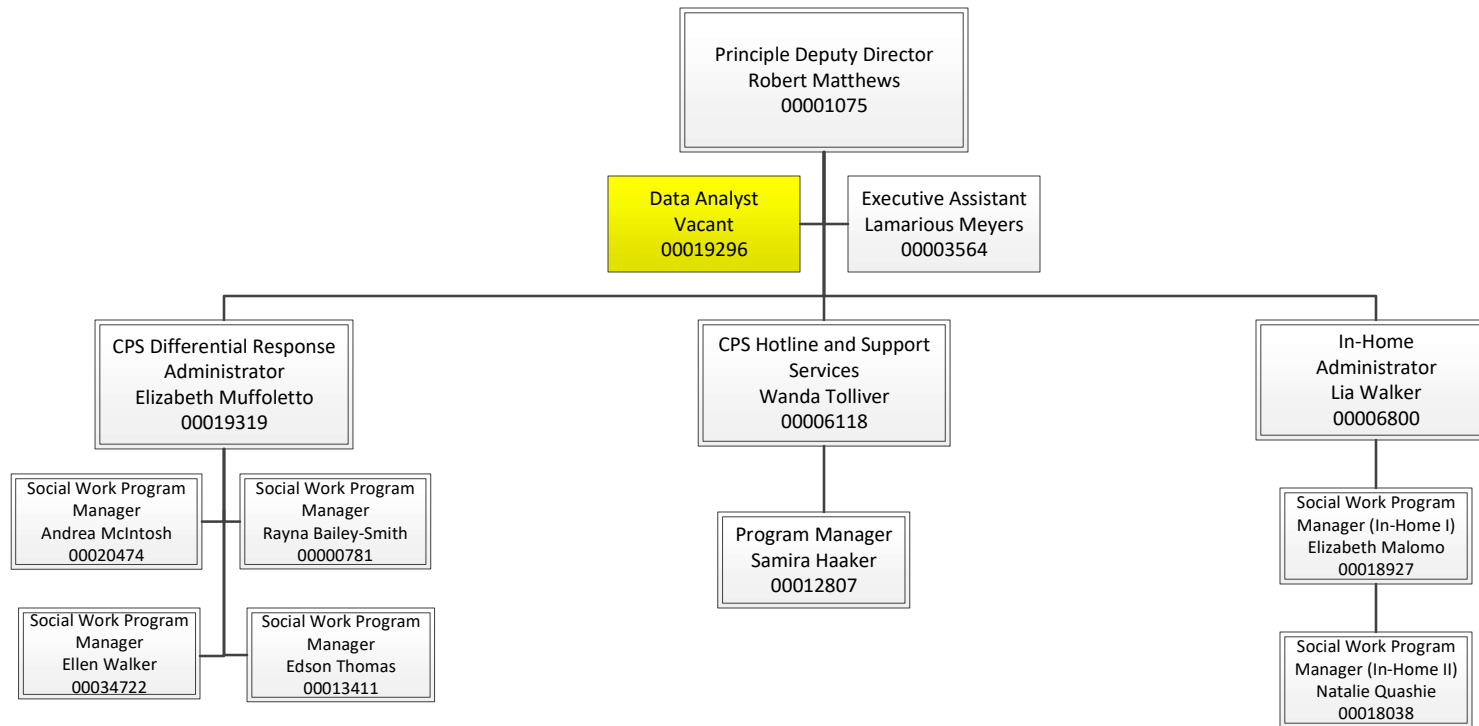
KINSHIP SERVICES



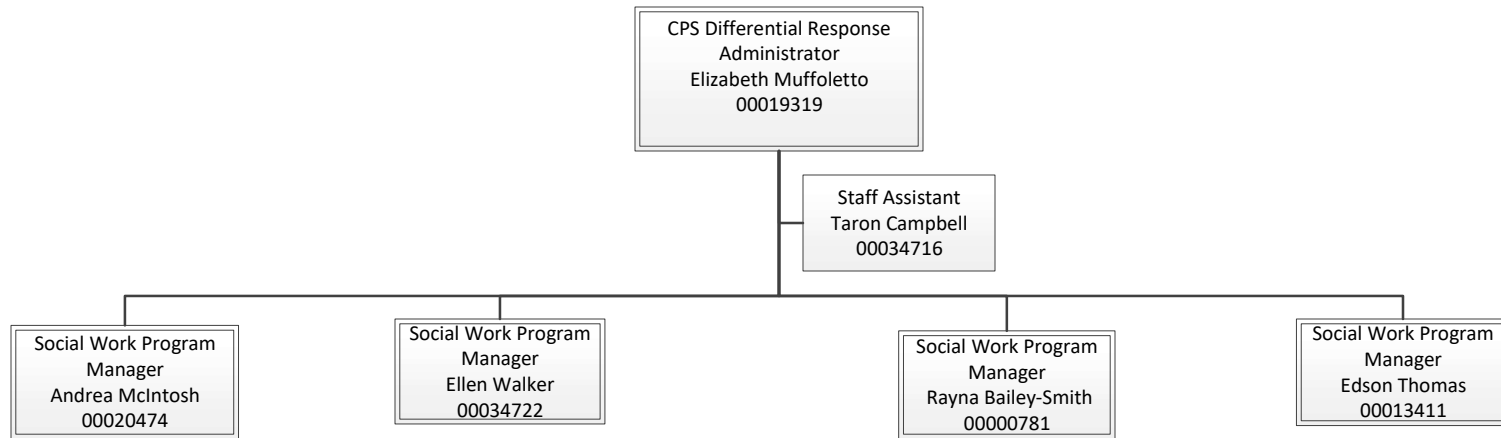
FAMILY RESOURCES DIVISION



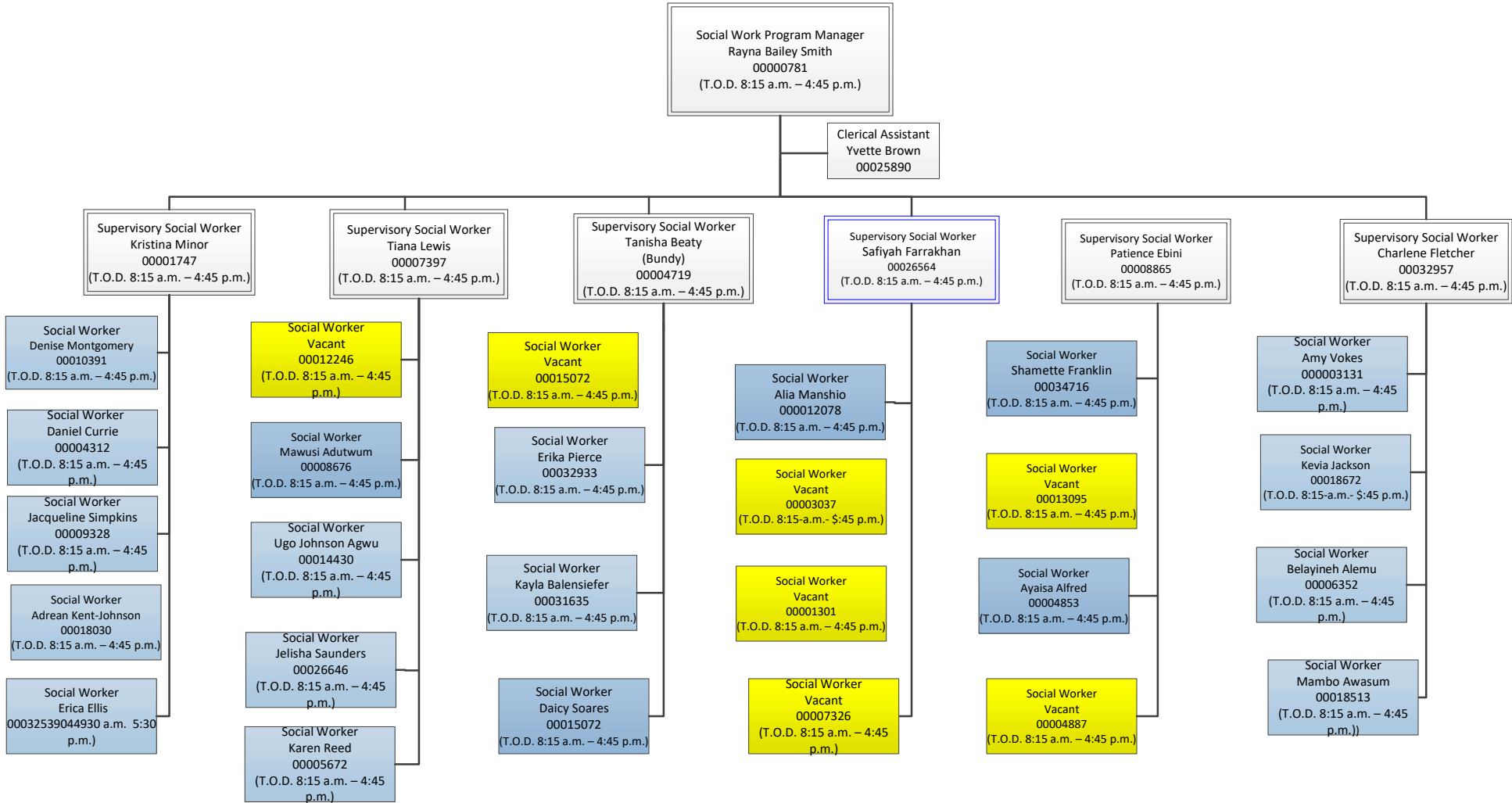
OFFICE OF THE DEPUTY DIRECTOR FOR ENTRY SERVICES



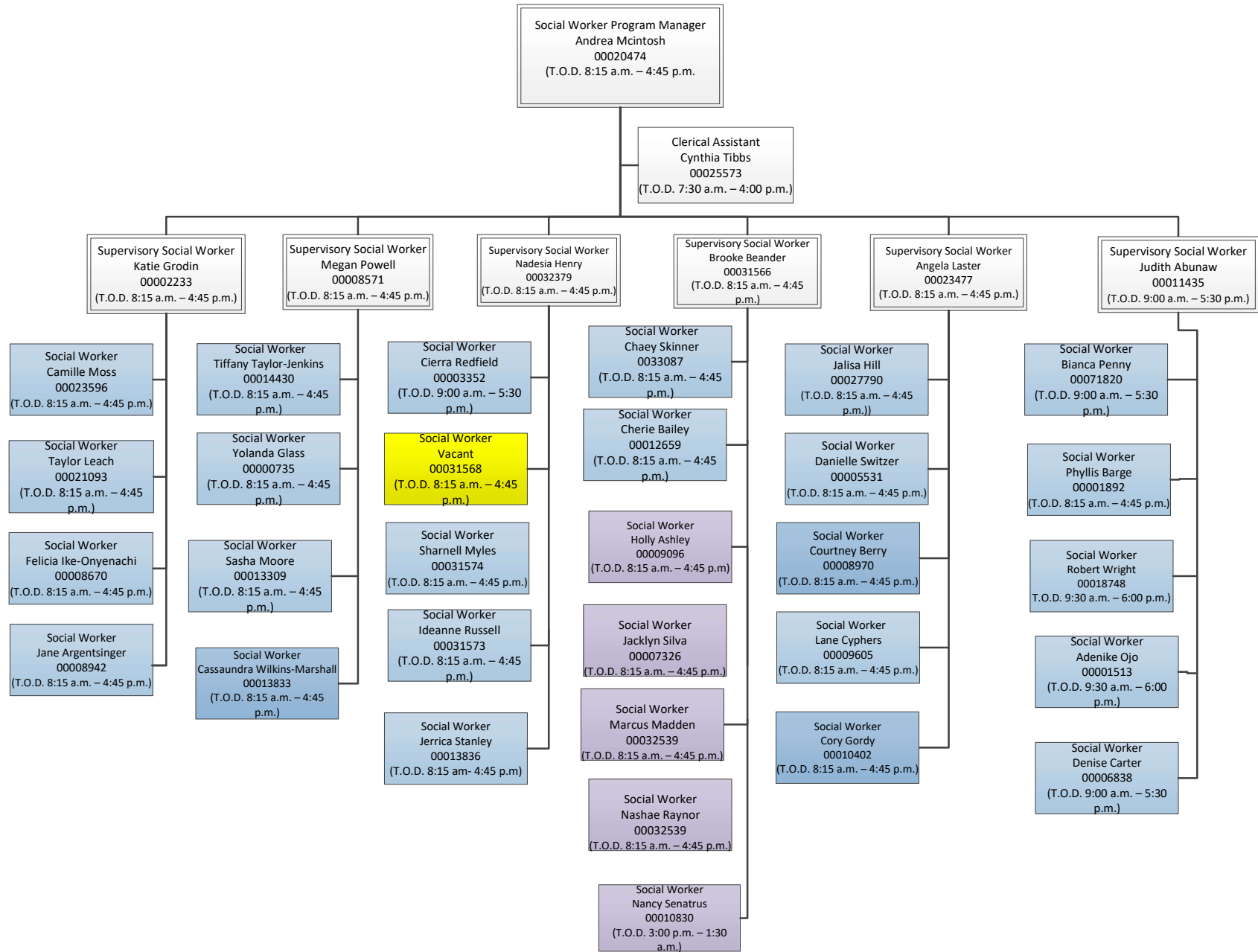
CHILD PROTECTIVE SERVICES INVESTIGATIONS



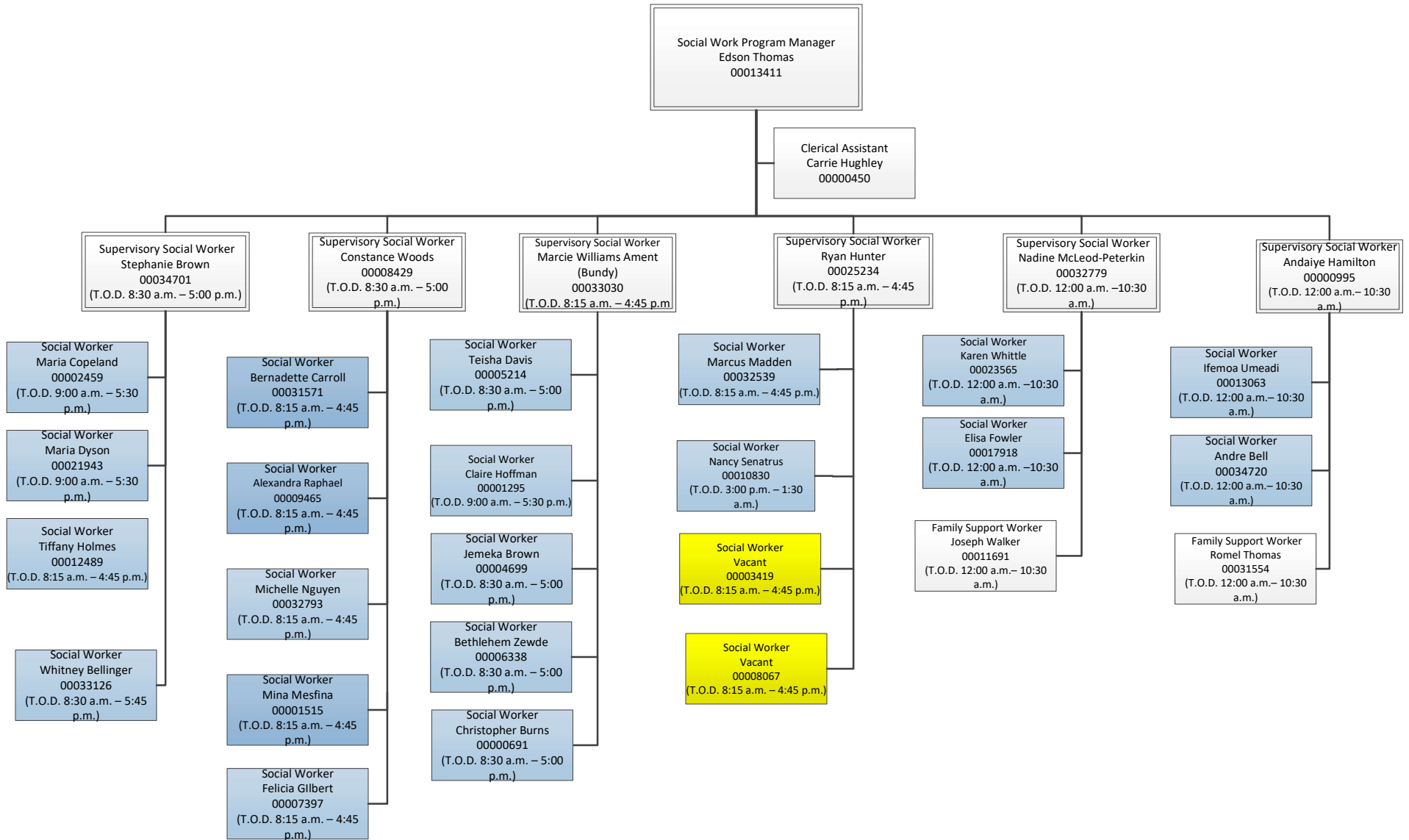
CPS INVESTIGATIONS DIVISION I



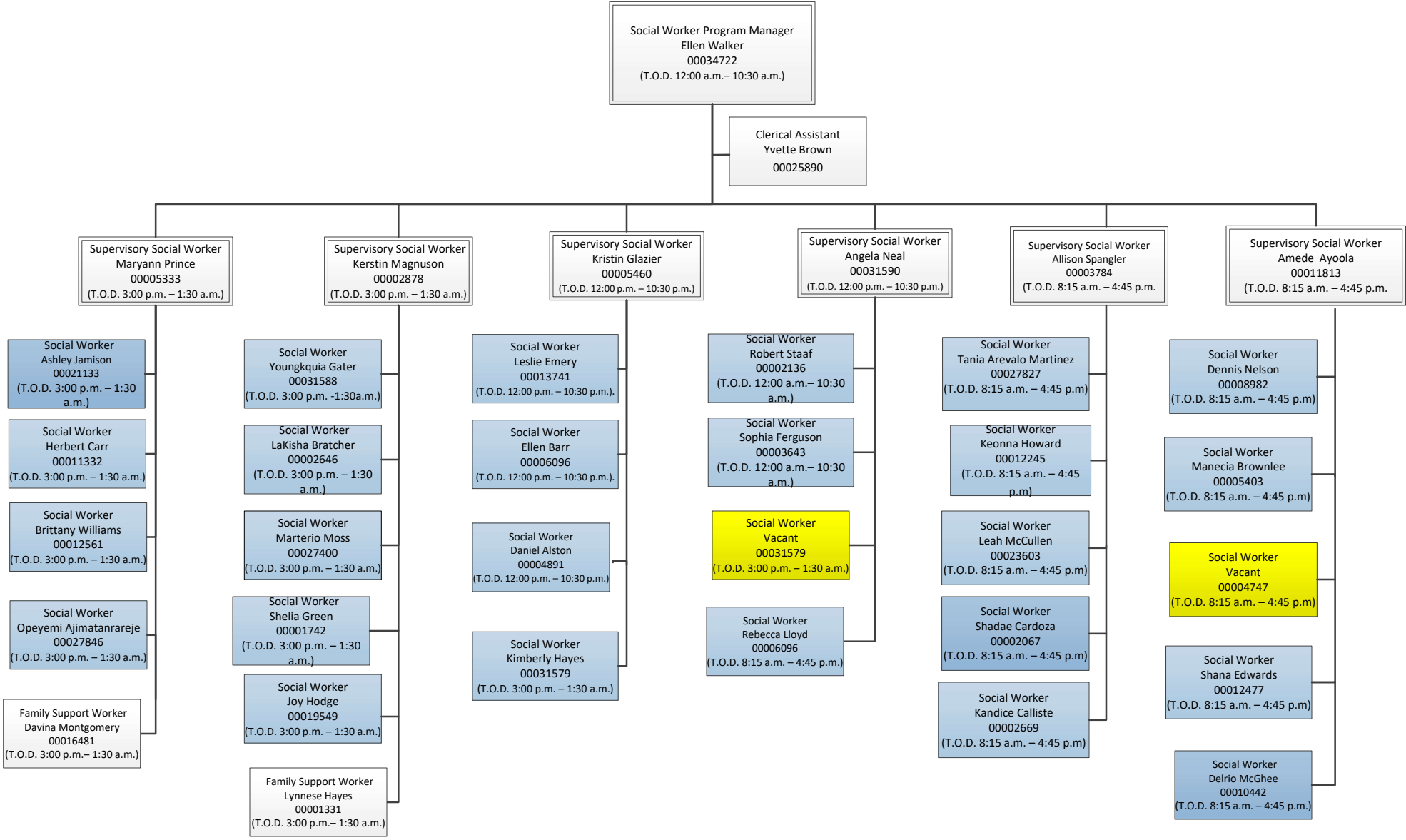
CPS INVESTIGATIONS DIVISION II



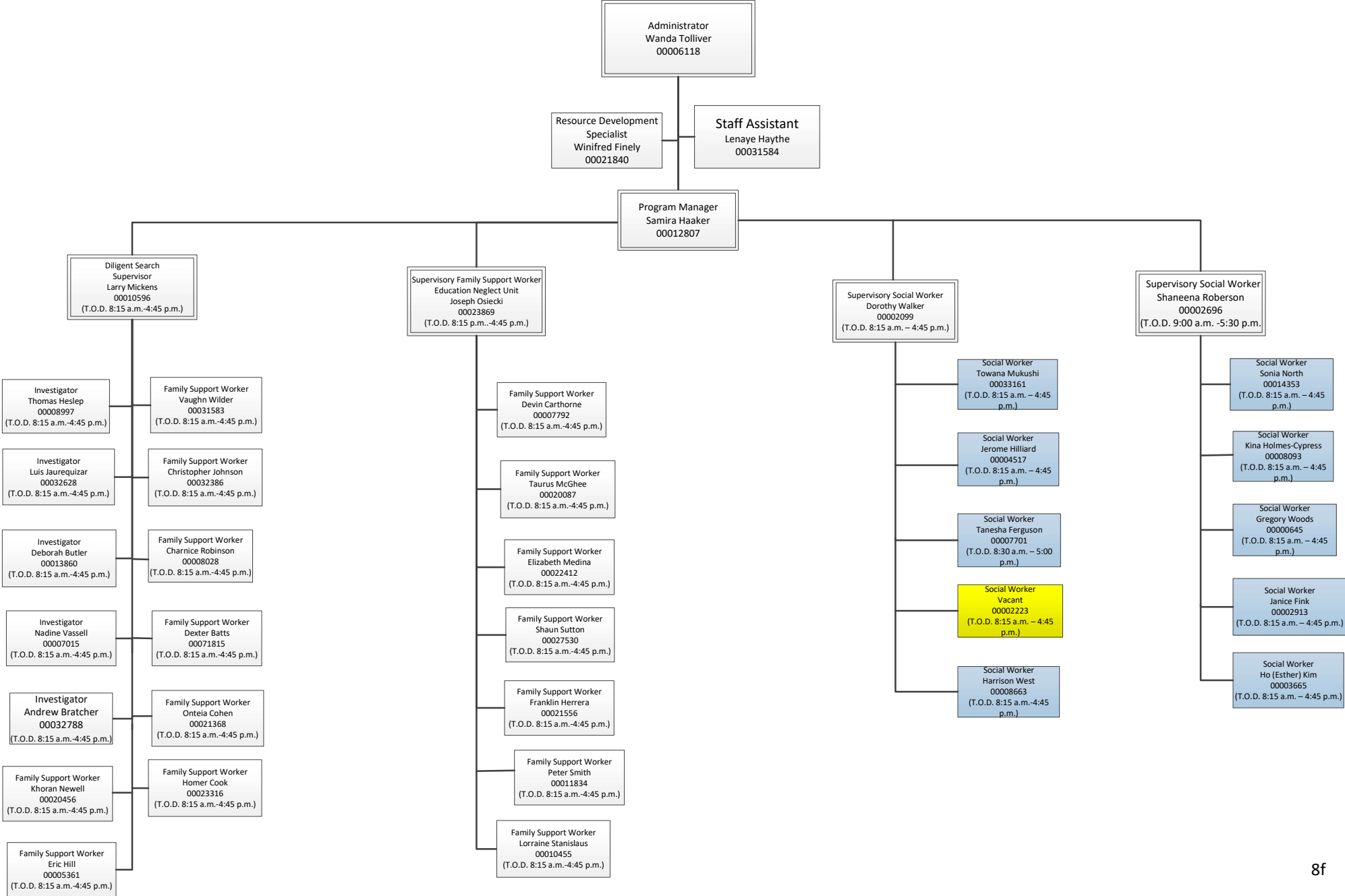
CPS INVESTIGATIONS DIVISION III



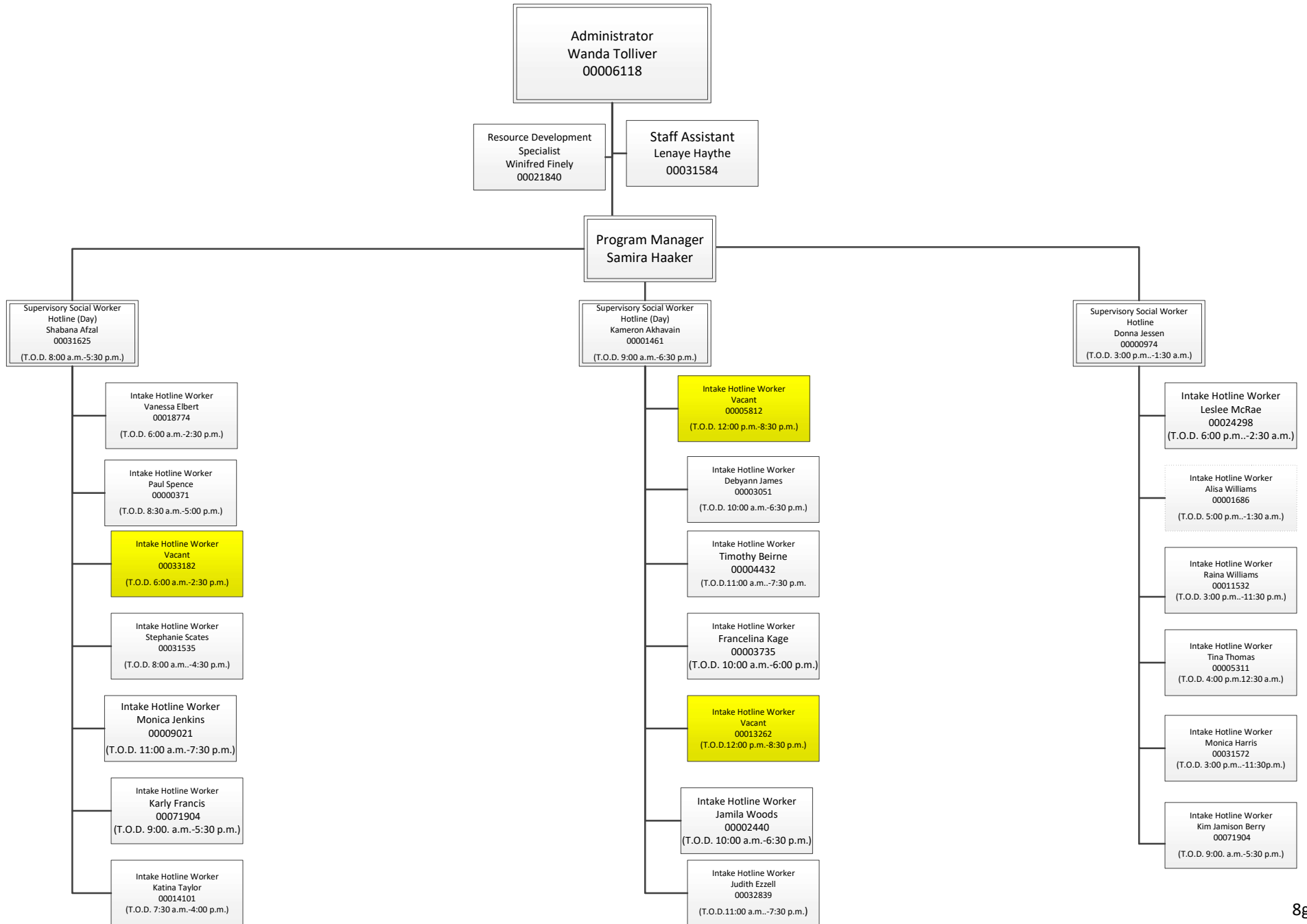
CPS INVESTIGATIONS DIVISION IV



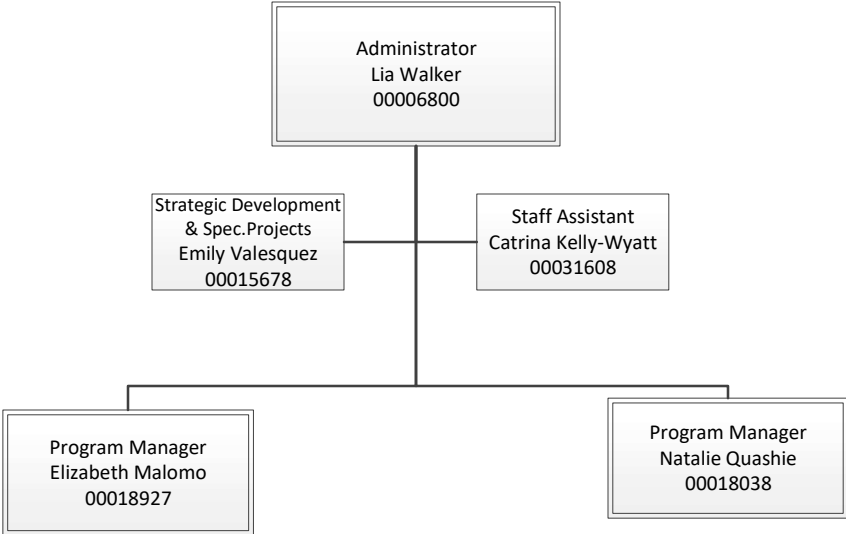
CPS SUPPORT SERVICES



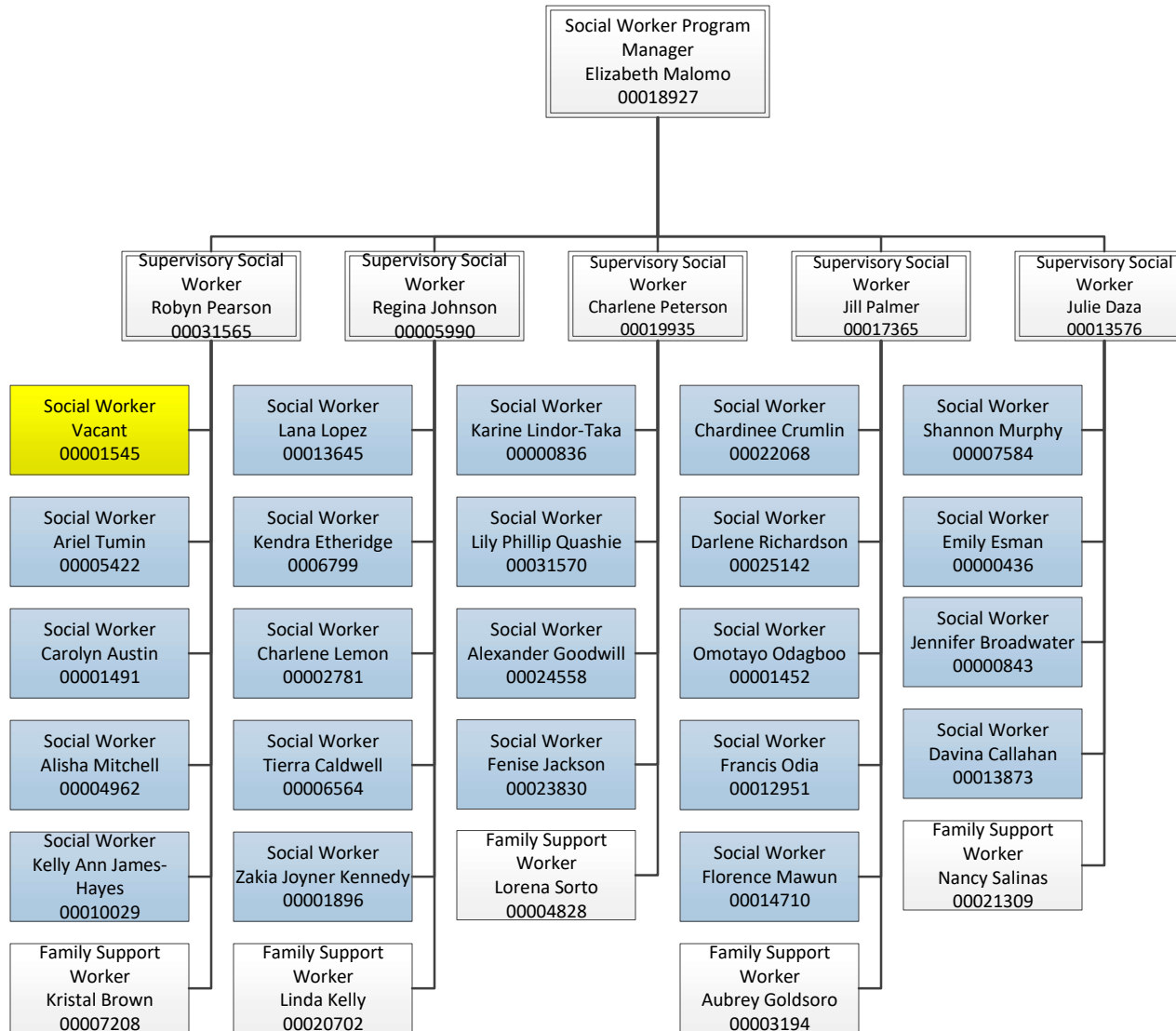
CPS HOTLINE



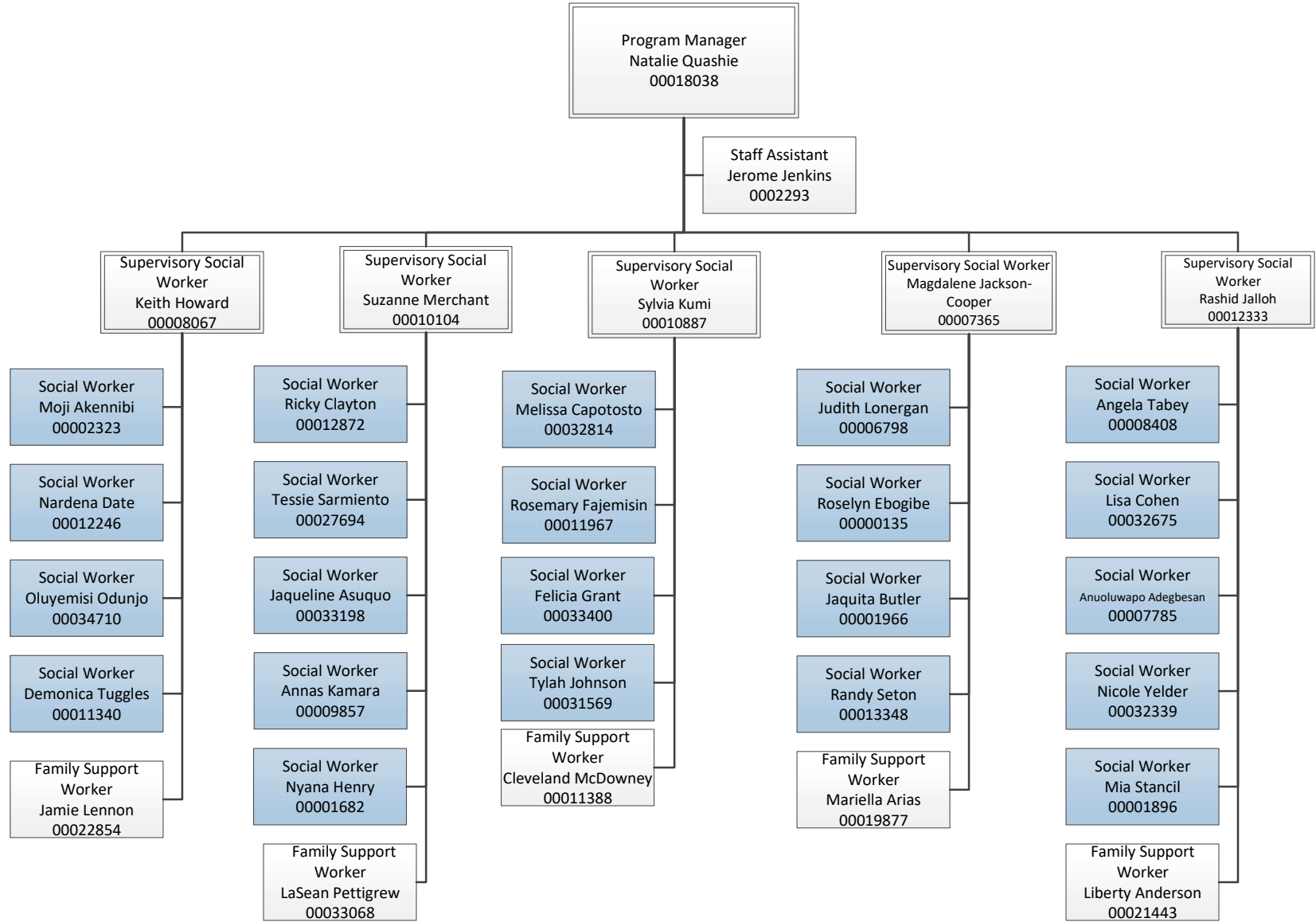
IN-HOME OVERVIEW



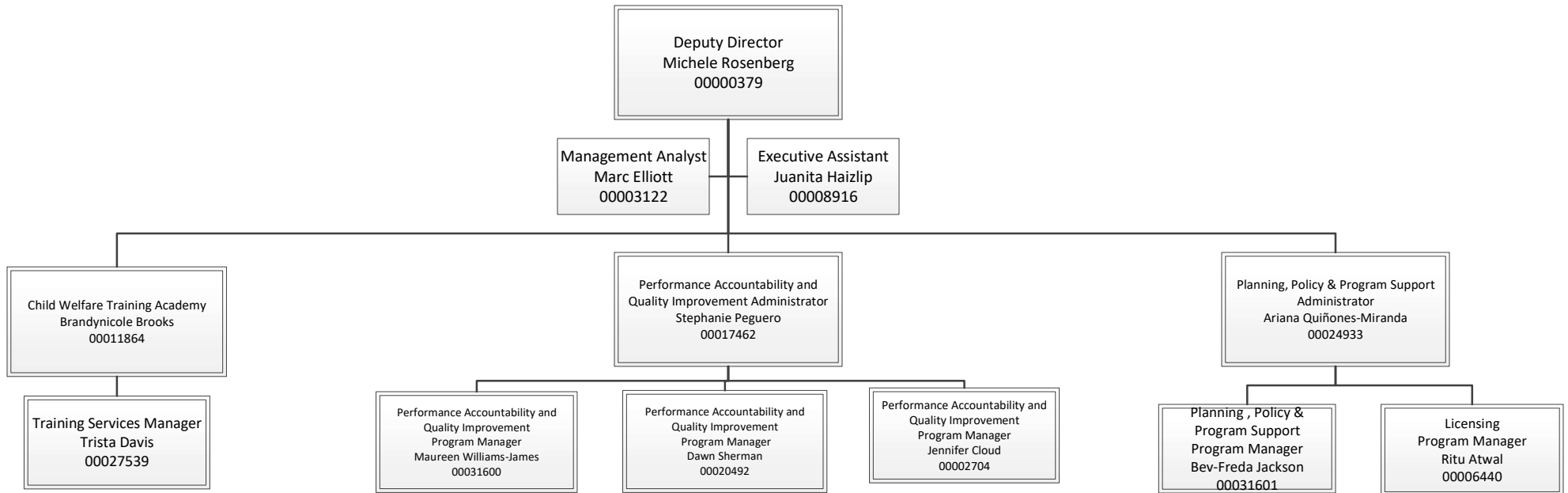
IN-HOME I



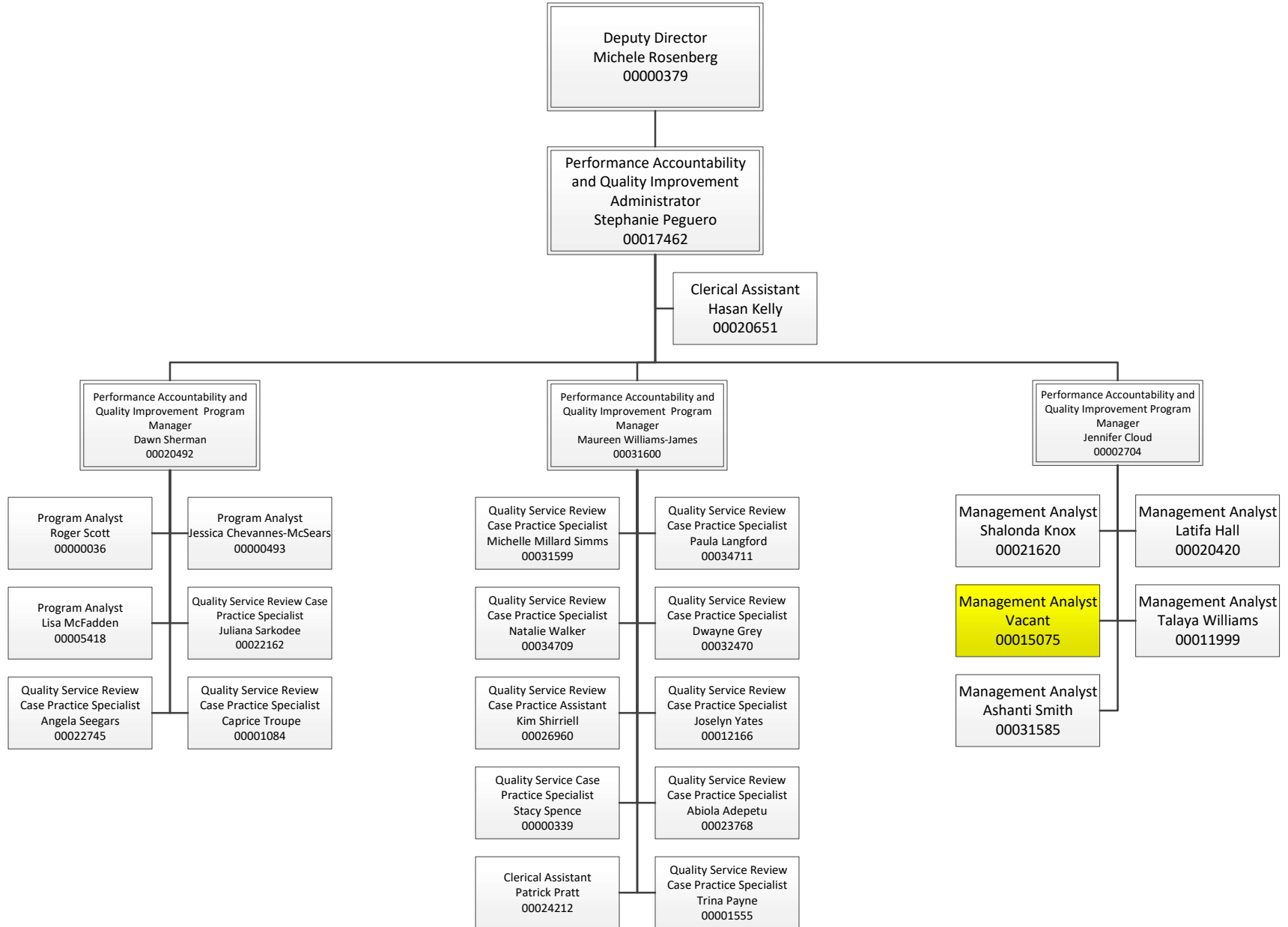
IN-HOME II



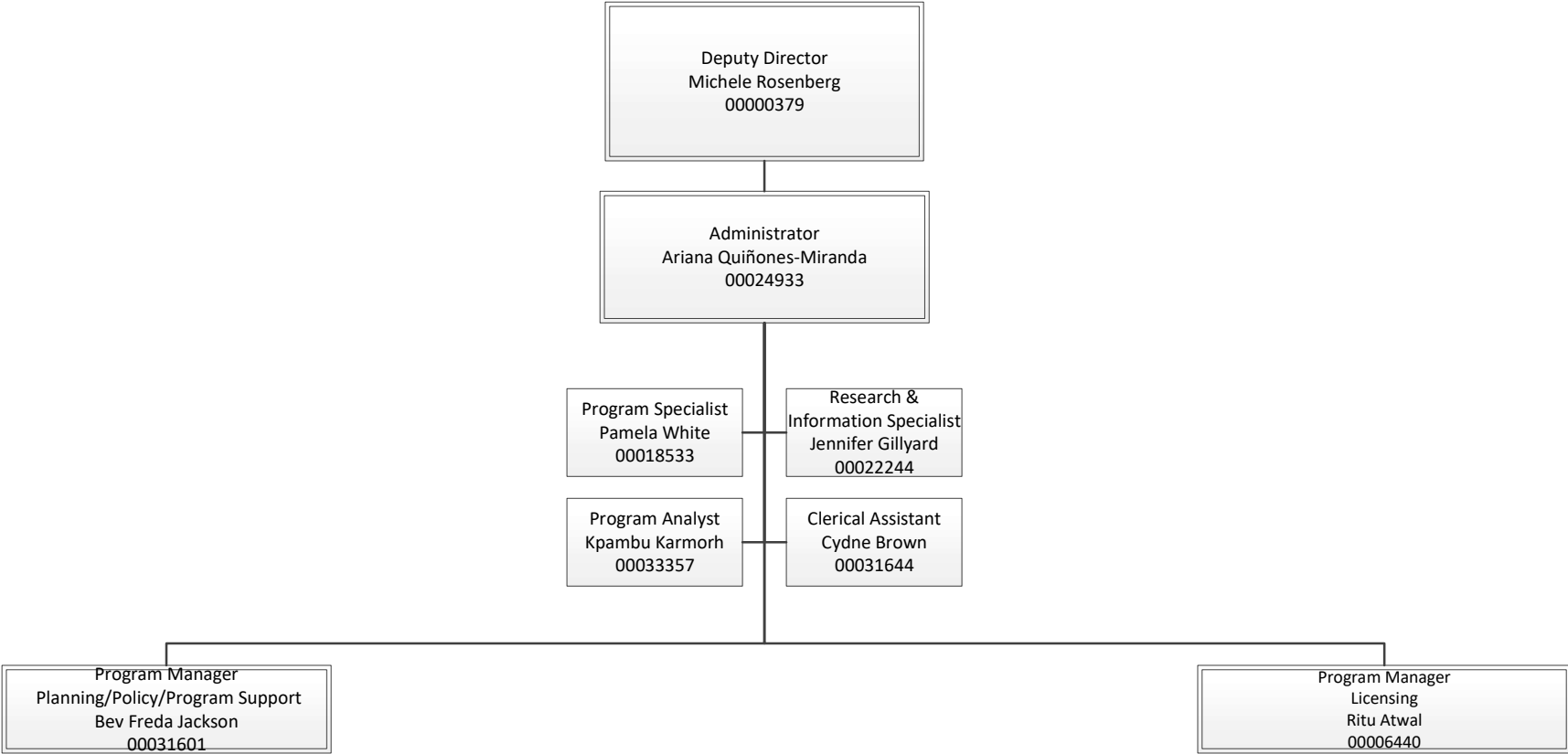
OFFICE OF THE DEPUTY DIRECTOR FOR PLANNING, POLICY & PROGRAM SUPPORT



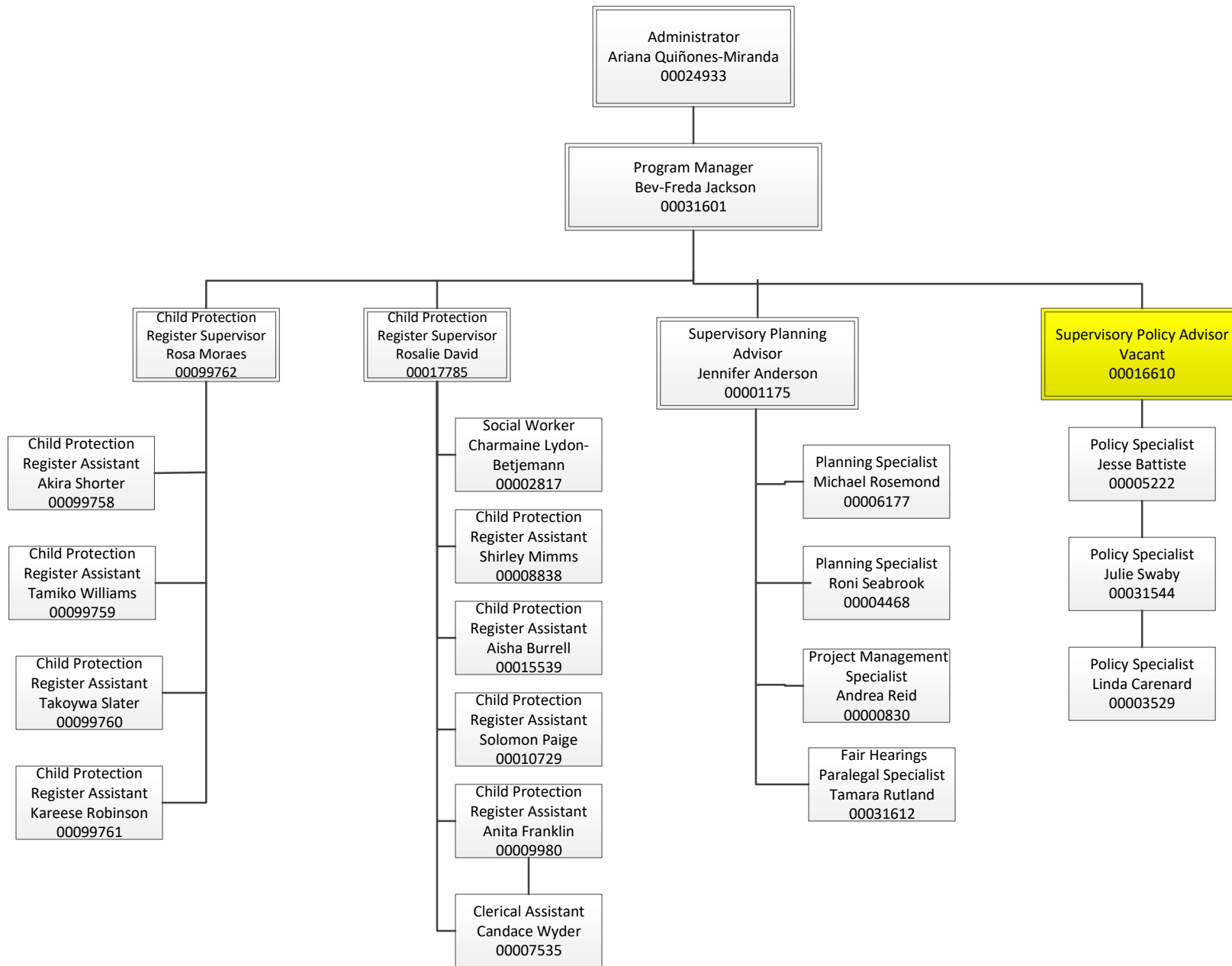
PERFORMANCE ACCOUNTABILITY AND QUALITY IMPROVEMENT ADMINISTRATION



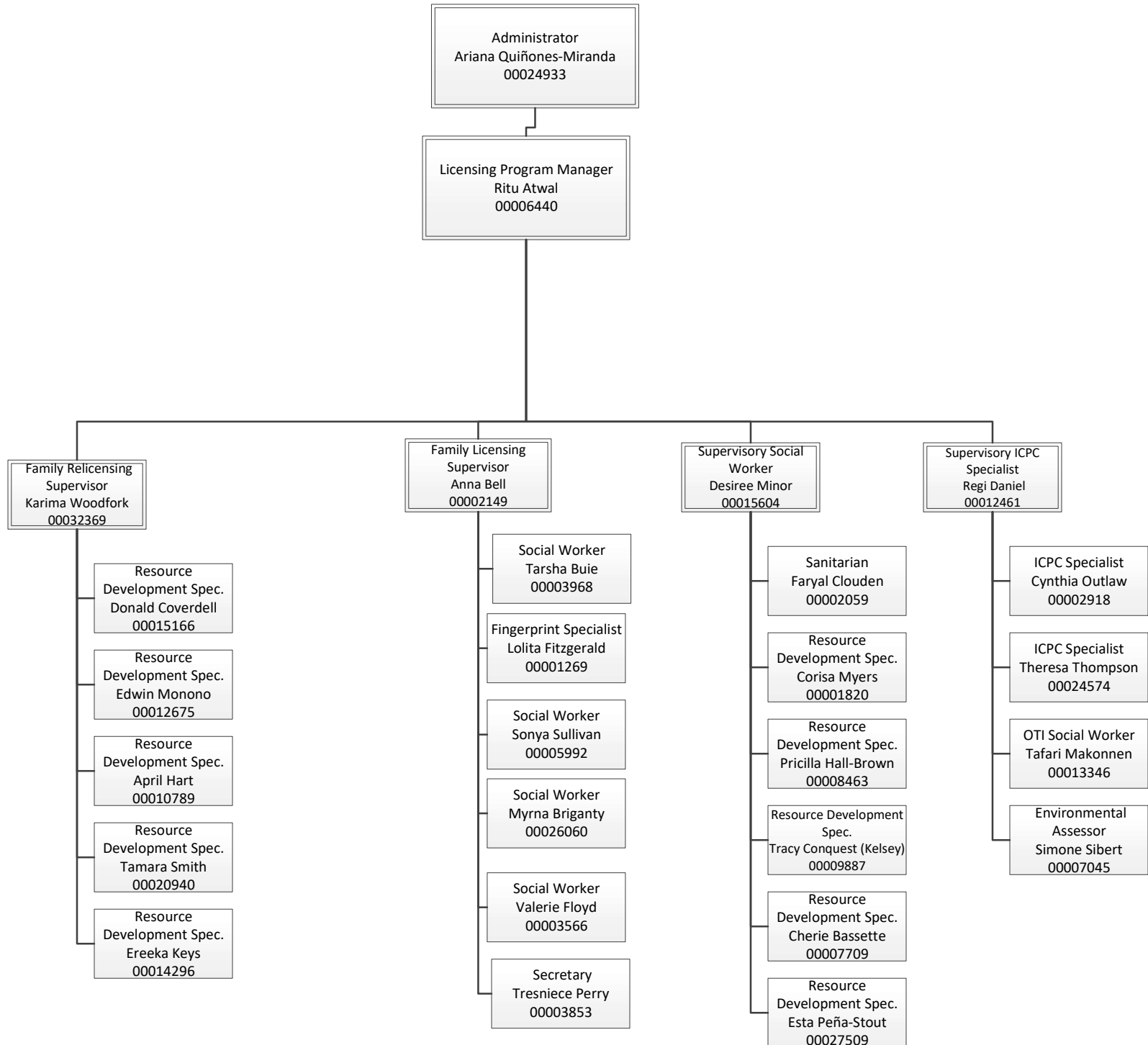
PLANNING, POLICY, PROGRAM SUPPORT & LICENSING ADMINISTRATION



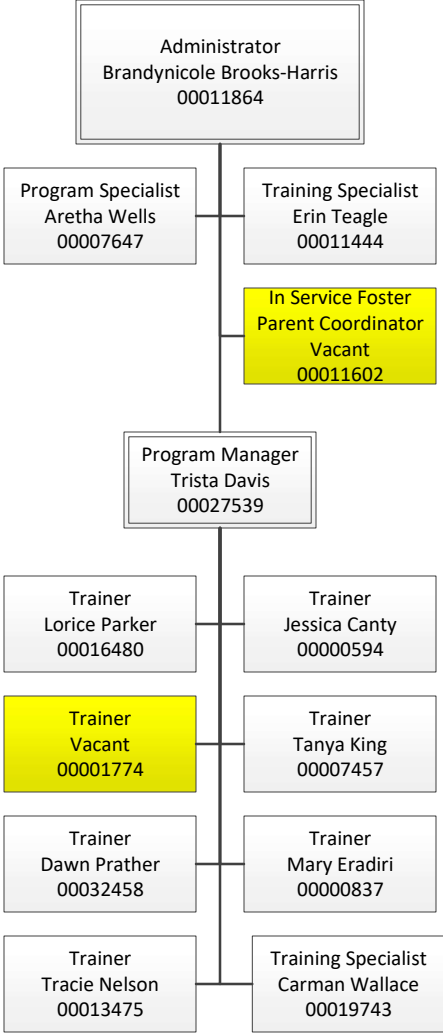
PLANNING, POLICY, & PROGRAM SUPPORT DIVISION



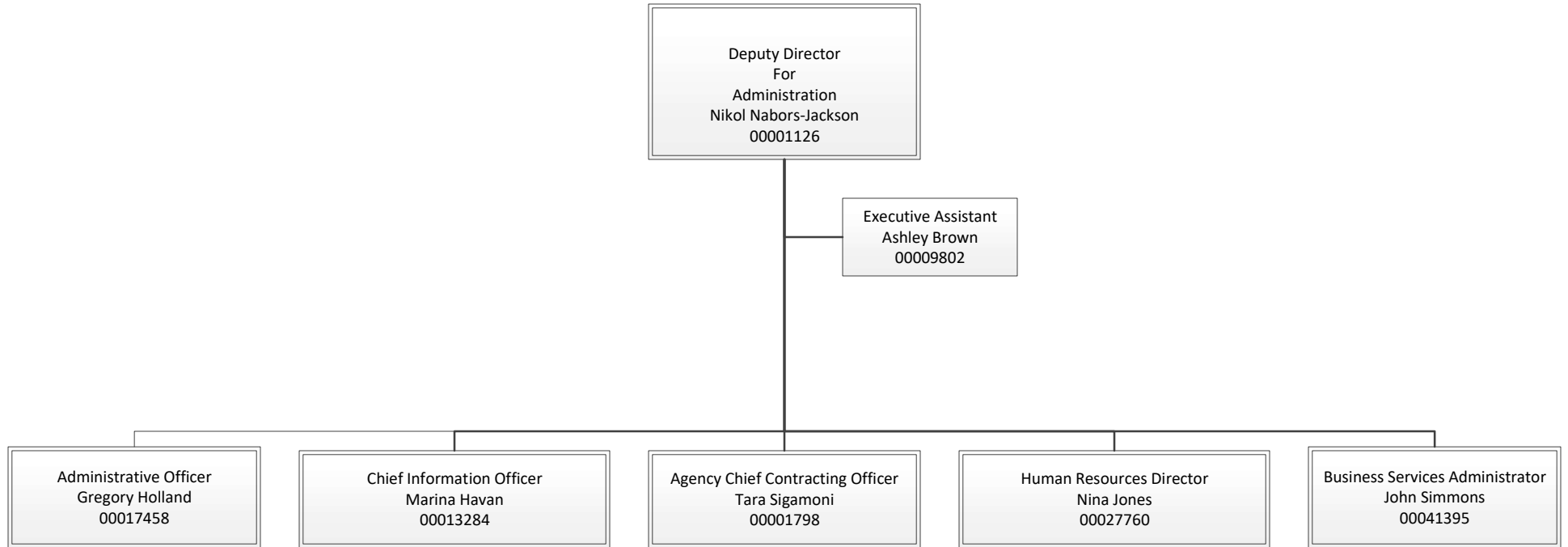
LICENSING DIVISION



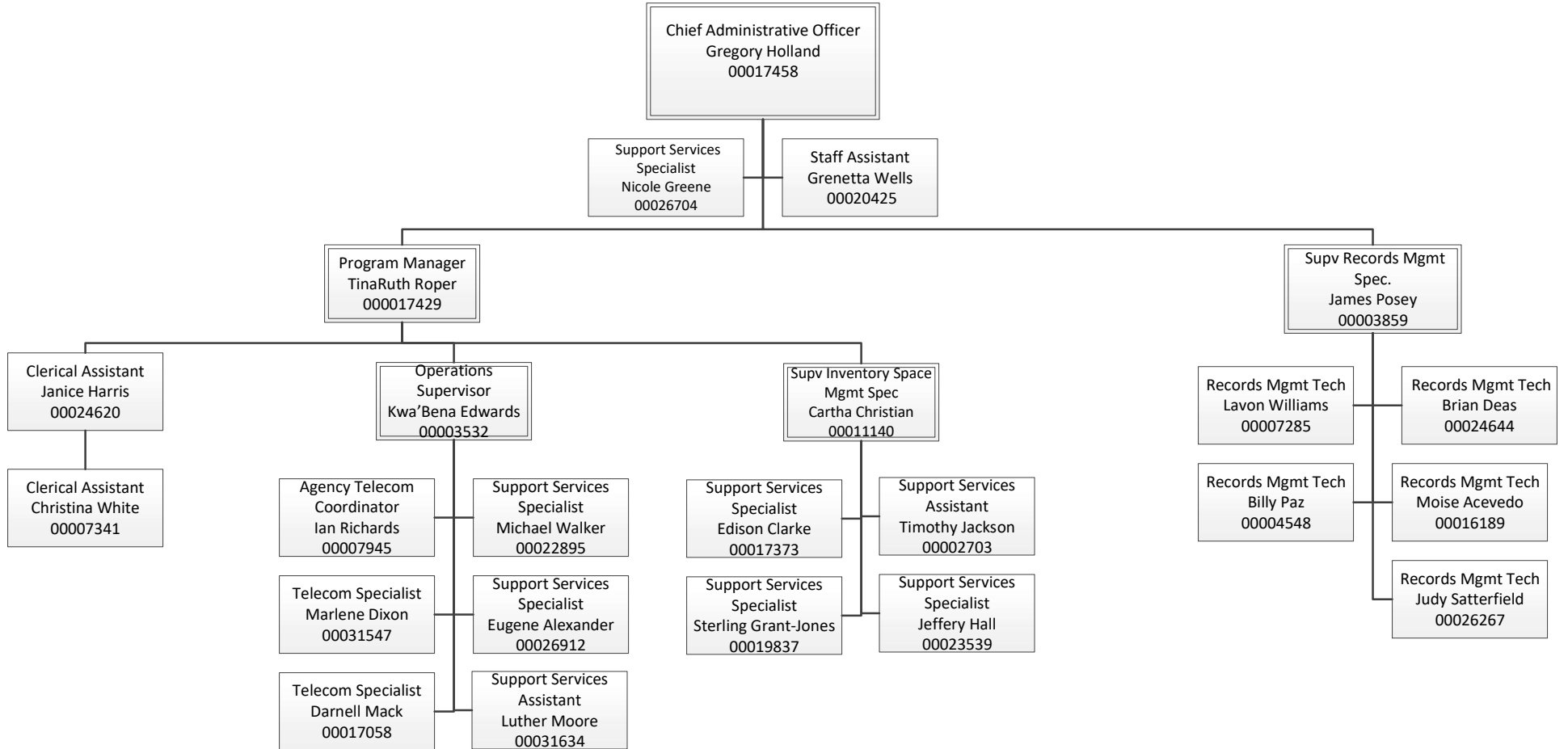
CHILD WELFARE TRAINING ACADEMY



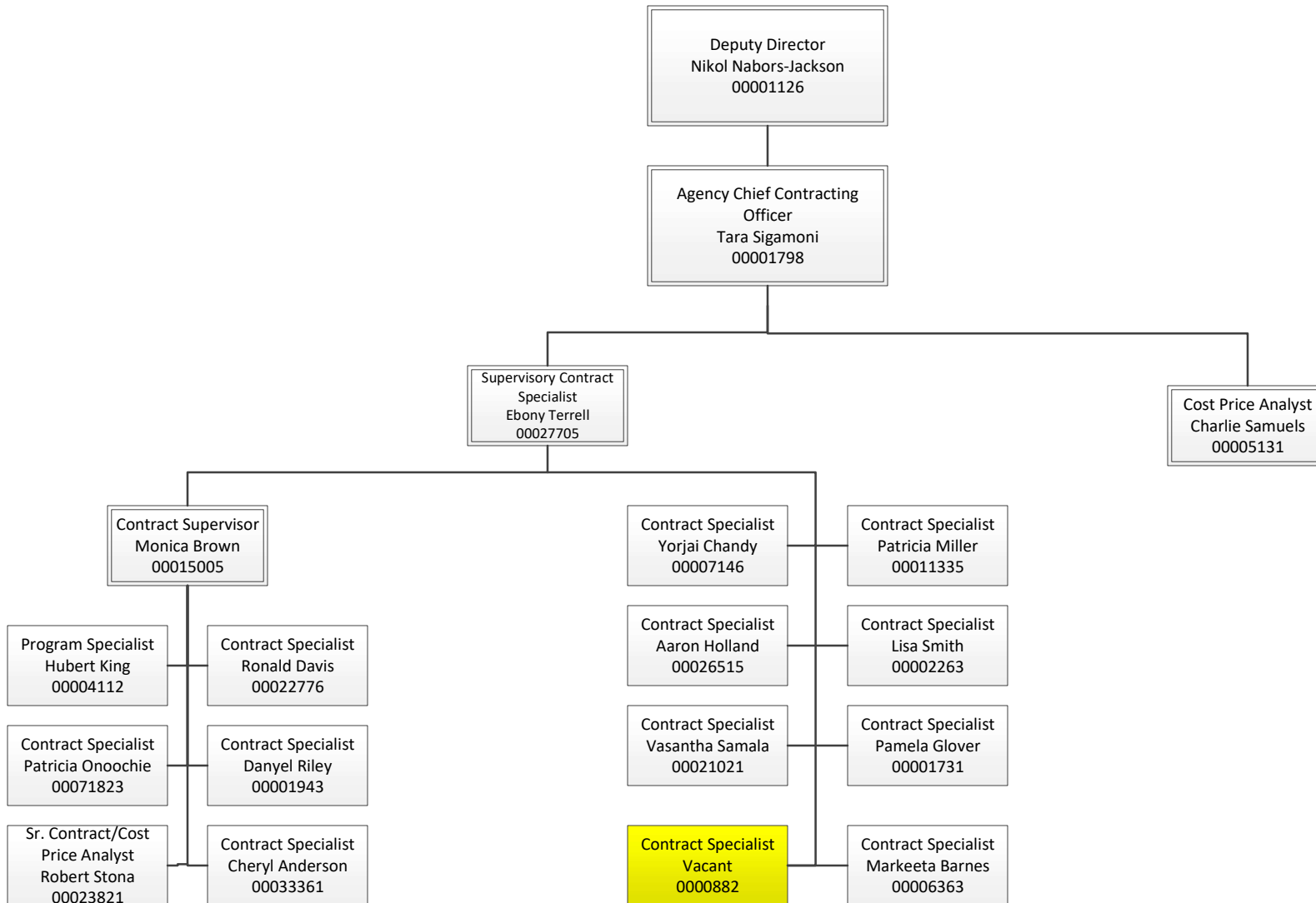
OFFICE OF THE DEPUTY DIRECTOR FOR ADMINISTRATION



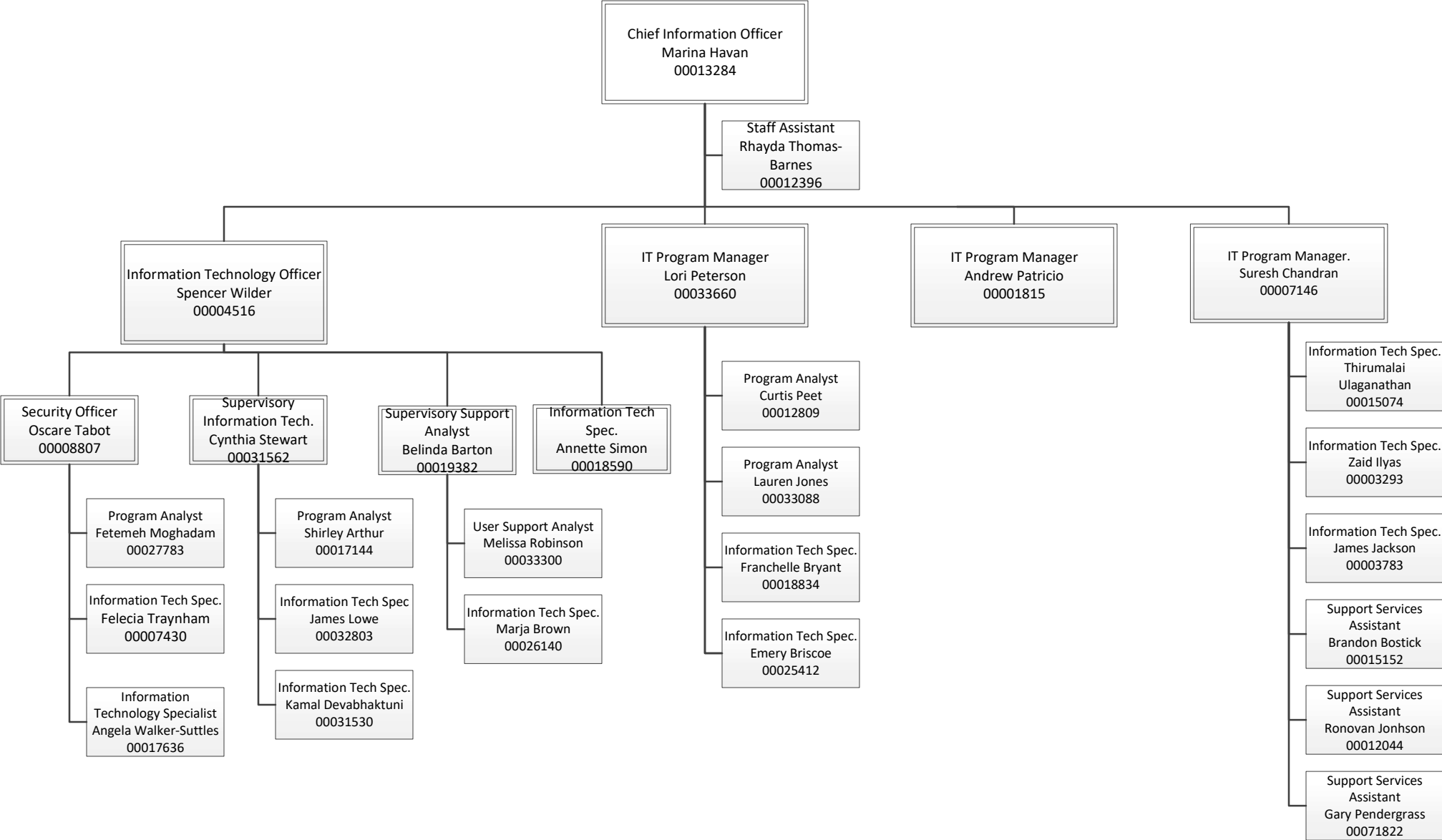
CHIEF ADMINISTRATIVE OFFICE



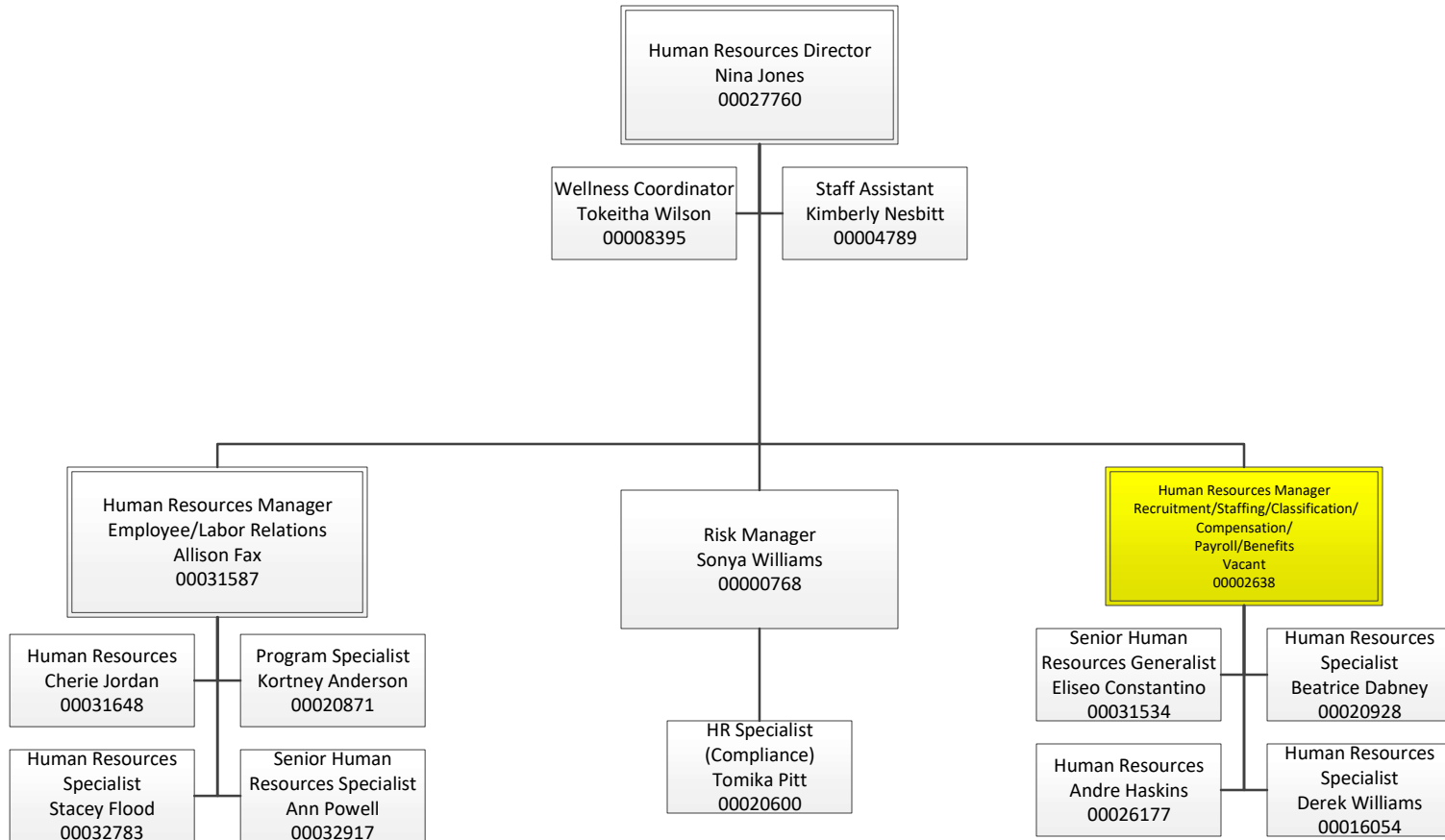
CONTRACTS & PROCUREMENT ADMINISTRATION (PROPOSED)



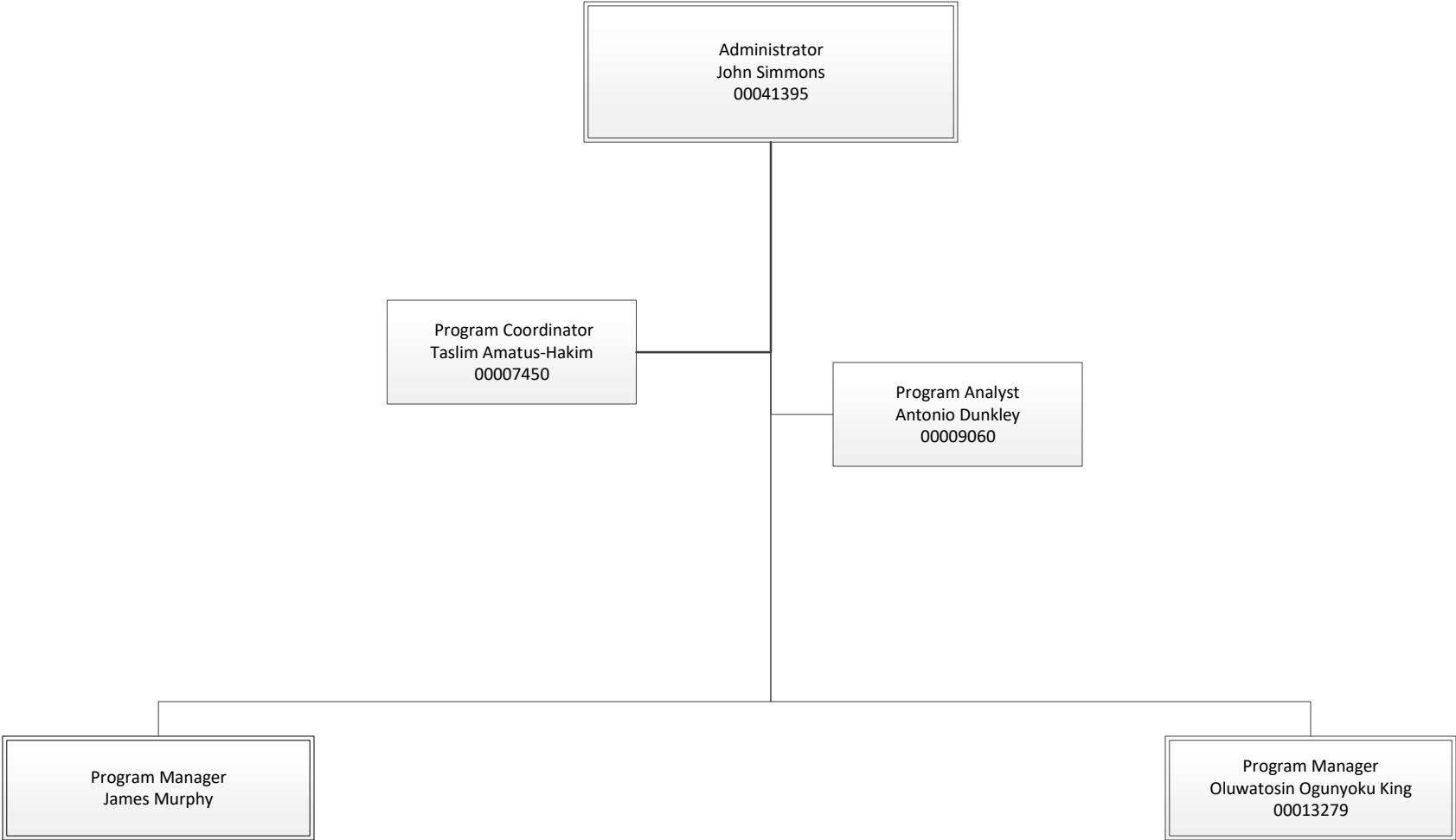
CHILD INFORMATION SYSTEM ADMINISTRATION



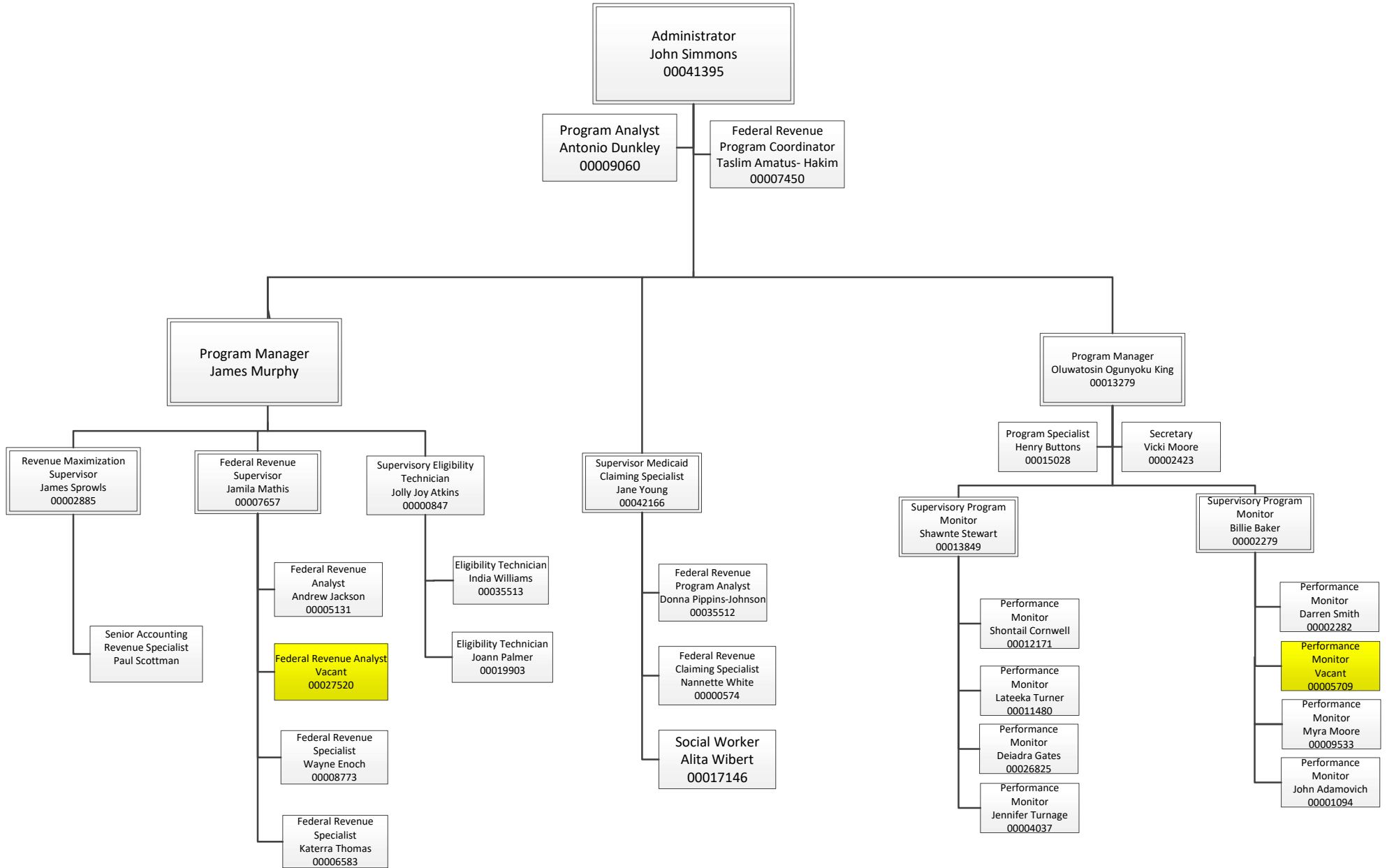
HUMAN RESOURCES ADMINISTRATION



BUSINESS SERVICES ADMINISTRATION OVERVIEW



BUSINESS SERVICES OVERVIEW



CONTRACTS MONITORING DIVISION

